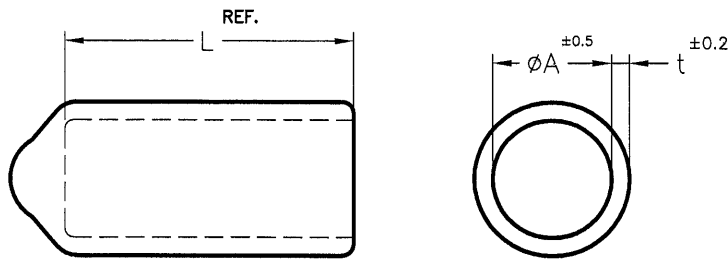


REVISIONS			
REV	DESCRIPTION	DATE	BY



PART NO.	A	L	t
VCP01005BK	1.0	5.0	0.8
VCP01706BK	1.7	6.0	0.8
VCP01716BK	1.7	16.0	0.8
VCP02012BK	2.0	12.0	0.8
VCP02015BK	2.0	15.0	0.8
VCP02016BK	2.0	16.0	0.8
VCP02512BK	2.5	12.0	0.8
VCP02607BK	2.6	7.0	0.8
VCP02608BK	2.6	8.0	0.8
VCP02609BK	2.6	9.0	0.8
VCP02612BK	2.6	12.0	0.8
VCP02655BK	2.6	5.5	0.8
VCP02909BK	2.9	9.0	1.0
VCP02916BK	2.9	16.0	1.0
VCP03206BK	3.2	6.0	1.0
VCP03210BK	3.2	10.0	1.0
VCP03213BK	3.2	13.0	1.0
VCP03508BK	3.5	8.0	1.0
VCP03513BK	3.5	13.0	1.0
VCP04006BK	4.0	6.0	1.0
VCP04008BK	4.0	8.0	1.0
VCP04010BK	4.0	10.0	1.0
VCP040030BK	4.0	30.0	1.0
VCP04513BK	4.5	13.0	1.0
VCP045017BK	4.5	17.0	0.8
VCP04807BK	4.8	7.0	1.0
VCP04809BK	4.8	9.0	1.0
VCP04813BK	4.8	13.0	1.0
VCP04817BK	4.8	17.0	1.0
VCP05511BK	5.5	11.0	1.0

PART NO.	A	L	t
VCP05708BK	5.7	8.0	1.0
VCP05710BK	5.7	10.0	1.0
VCP05713BK	5.7	13.0	1.0
VCP05720BK	5.7	20.0	1.0
VCP057120BK	5.7	120.0	1.0
VCP06008BK	6.0	8.0	1.0
VCP06009BK	6.0	9.0	1.0
VCP06012BK	6.0	12.0	1.0
VCP06313BK	6.3	13.0	1.0
VCP06318BK	6.3	18.0	1.0
VCP06508BK	6.5	8.0	1.0
VCP06513BK	6.5	13.0	1.0
VCP07013BK	7.0	13.0	1.0
VCP07020BK	7.0	20.0	1.0
VCP074013BK	7.4	13.0	1.0
VCP07608BK	7.6	8.0	1.0
VCP07613BK	7.6	13.0	1.0
VCP08008BK	8.0	8.0	1.0
VCP08010BK	8.0	10.0	1.0
VCP08020BK	8.0	20.0	1.0
VCP08509BK	8.5	9.0	1.0
VCP08515BK	8.5	15.0	1.0
VCP09220BK	9.2	20.0	1.0
VCP09416BK	9.4	16.0	1.0
VCP09513BK	9.5	13.0	1.0
VCP09516BK	9.5	16.0	1.0
VCP10020BK	10.0	20.0	1.0
VCP11410BK	11.4	10.0	1.0
VCP11413BK	11.4	13.0	1.0
VCP11420BK	11.4	20.0	1.0

PART NO.	A	L	t
VCP11710BK	11.7	10.0	1.2
VCP12016BK	12.0	16.0	1.0
VCP13025BK	13.0	25.0	1.2
VCP14018BK	14.0	18.0	1.2
VCP14035BK	14.0	35.0	1.2
VCP15012BK	15.0	12.0	1.2
VCP15014BK	15.0	14.0	1.2
VCP15018BK	15.0	18.0	1.2
VCP15025BK	15.0	25.0	1.2
VCP155014BK	15.5	14.0	1.3
VCP15530BK	15.5	30.0	1.3
VCP17813BK	17.8	13.0	1.3
VCP19008BK	19.0	8.0	1.5
VCP20518BK	20.5	18.0	1.3
VCP20516BK	20.5	16.0	1.5
VCP21017BK	21.0	17.0	1.5
VCP22016BK	22.0	16.0	1.5
VCP35060BK	35.0	60.0	1.6
VCP35075BK	35.0	75.0	1.6
VCP47022BK	47.0	22.0	2.0
VCP47042BK	47.0	42.0	2.0
VCP150017BK	15.0	17.0	1.1
VCP150024BK	15.0	24.0	1.2
VCP190035BK	19.0	35.0	1.5
VCP240012BK	24.0	12.0	1.5
VCP300020BK	30.0	20.0	1.5

NOTE:1. IT IS NORMAL IF IT IS SHRINKING.

內縮為正常現象。

2. IT IS THE PVC DIP MOULDING PRODUCT, AND THE DIMENSION IS ONLY FOR REFERENCE.

此產品為液態P.V.C沾浸，尺寸無法準確量測，以實裝為主，量測為參考。

3. ONLY MEET RoHS STANDARD.

只符合RoHS.



<p>康揚企業股份有限公司 KANG YANG HARDWARE ENTERPRISE CO., LTD. 康揚塑膠(東莞)有限公司 KANG YANG PLASTIC(DONG GUAN) CO., LTD. 康哲電腦配件(吳江)有限公司 KANG CHE COMPUTER COMPONENTS(WUJIANG) CO., LTD.</p>				TITLE	VCP CAP	SPEC. DWG.	
				MATERIAL	SOFT P.V.C	DATE	2000.04.13
				FINISH		DRAWN	JASON
				COLOR	BLACK	CHECK	
PART NUMBER	SEE ABOVE	DRAWING NUMBER	VCP-H	UNLESS OTHERWISE SPECIFIED TOLERANCE	SEE ABOVE	APPROVED	
SIZE	A4	SCALE	NONE	UNIT	mm	REV	AB