

Composite Cable

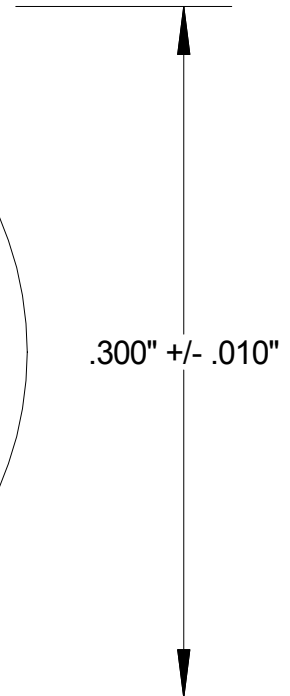
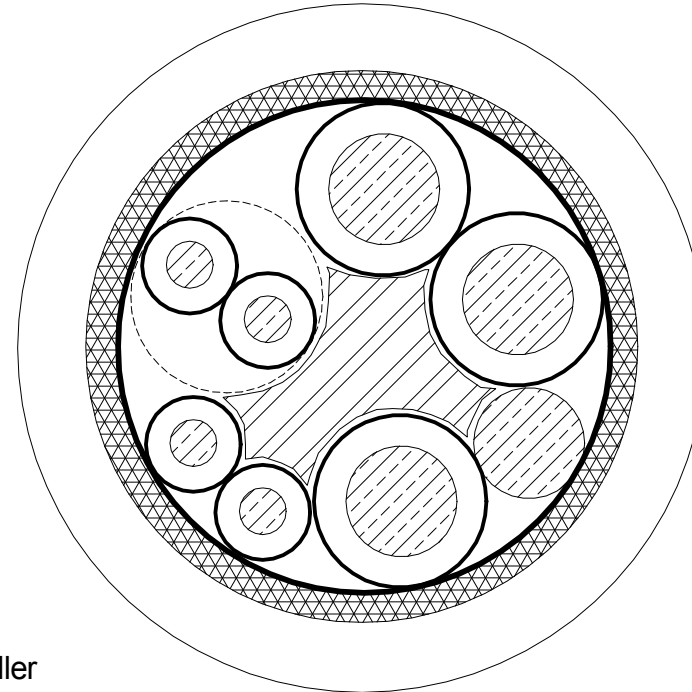
Number of 18 awg Conductors: 3
 AWG/Strand: 18 awg (16/30) Tinned Plated Copper
 Nominal Conductor O.D.: .045"
 Primary Insulation: .012" Nominal Wall PVC
 Primary O.D.: .070" +/- .002"
 Color Code: White, Red, Black

Number of 26 awg Conductors: 2
 AWG/Strand: 26 awg (7/34) Tinned Plated Copper
 Nominal Conductor O.D.: .019"
 Primary Insulation: .010" Nominal Wall SR-PVC
 Primary O.D.: .039" +/- .002"
 Color Code: Gray, Orange

Number of Twisted Pairs: 1
 AWG/Strand: 26 awg (7/34) Tinned Plated Copper
 Nominal Conductor O.D.: .019"
 Primary Insulation: .010" Nominal Wall SR-PVC
 Primary O.D.: .039" +/- .002"
 Twinned: 2.0" Left Hand Lay
 Color Code: Blue-Yellow

Cabled: 3" Left Hand Lay
 3 X 18 awg, 2 x 26 awg, 1 x Pair 26 awg, Drain Wire, Center Filler
 Center Filler: Fibuluted Polypropylene
 Drain Wire: 18 awg (16/30) Tinned Plated Copper
 1st Shield: Overall Aluminum/Mylar/Aluminum 25% Min Overlap
 (Conductive Sides in Contact with Drain)
 2nd Shield: Tinned Plated Copper Braid
 80% Minimum Coverage
 Separator: Tissue Paper
 Jacket: .040" Nominal Wall Polyurethane
 (Pressure Extruded for Roundness)
 Jacket Color: Black
 Finished O.D.: .300" +/- .010"
 Printed: 7C-183-264-STP 300v --- ROHS
 Printing Ink: White
 Rated: -40°C to 105°C 300V (720 Hours Sunlight Resistant)

Revisions				
Rev.	Description	Date	Edit By	



Drawing #:	Rev.
------------	------

