

Project: West Block Rehabilitation Project  
Project Number: R.011801.188  
Owner: PSPC (Public Services Procurement Canada)  
Distribution: Paul Frame PSPC, Adam Wojdan PSPC, Keith Sim PSPC  
Irvin Heiber PCL, Louis Lortie AFGM, James Bridger AFGM

Instruction No: **FI-0604**  
Contractor: PCL Constructors Canada Inc.  
111 Wellington St. (Site Office)  
Ottawa Ontario, K1A 0A6

---

**SUBJECT: Chamber – Floor Box – Type D Desk**

---

LOCATION: Chamber 230-B

---

**DESCRIPTION:**

As requested by PCL (Tyler Zandbelt), find attached sketches for modified anchor locations and inclusion of custom covers for type D desks.

As per site discussion, floor boxes for the Type D single desks located on the raised access floor were installed rotated 90 degrees for conduit requirements. Design intent requires exterior desk leg alignment of A/B/C/D desks at each tier. PCL to verify with plywood desks on site prior to final anchor placement to confirm alignment and no conflicts with floor box / existing installations.

Custom floor box covers, one for each type D desk (x4), to be provided. Cable pass through location to be 90 degrees from standard for adjacency to desk leg and alignment with desk type D cable chase.

Modified anchor plate for third anchor point required due to proximity to floor box.

**ATTACHMENTS:**

- AI-622a-01 Floor Box Type D Modifications – West Upper Desk
- AI-622a-02 Floor Box Type D Modifications. – West Lower Desk
- AI-622a-03 Floor Box Type D Modifications – East Lower Desk
- AI-622a-04 Floor Box Type D Modifications. – East Upper Desk

ANTICIPATED COST: N/A

REASON FOR CHANGE: 7

Issued by the Consultant

**Amanda Gilbert**

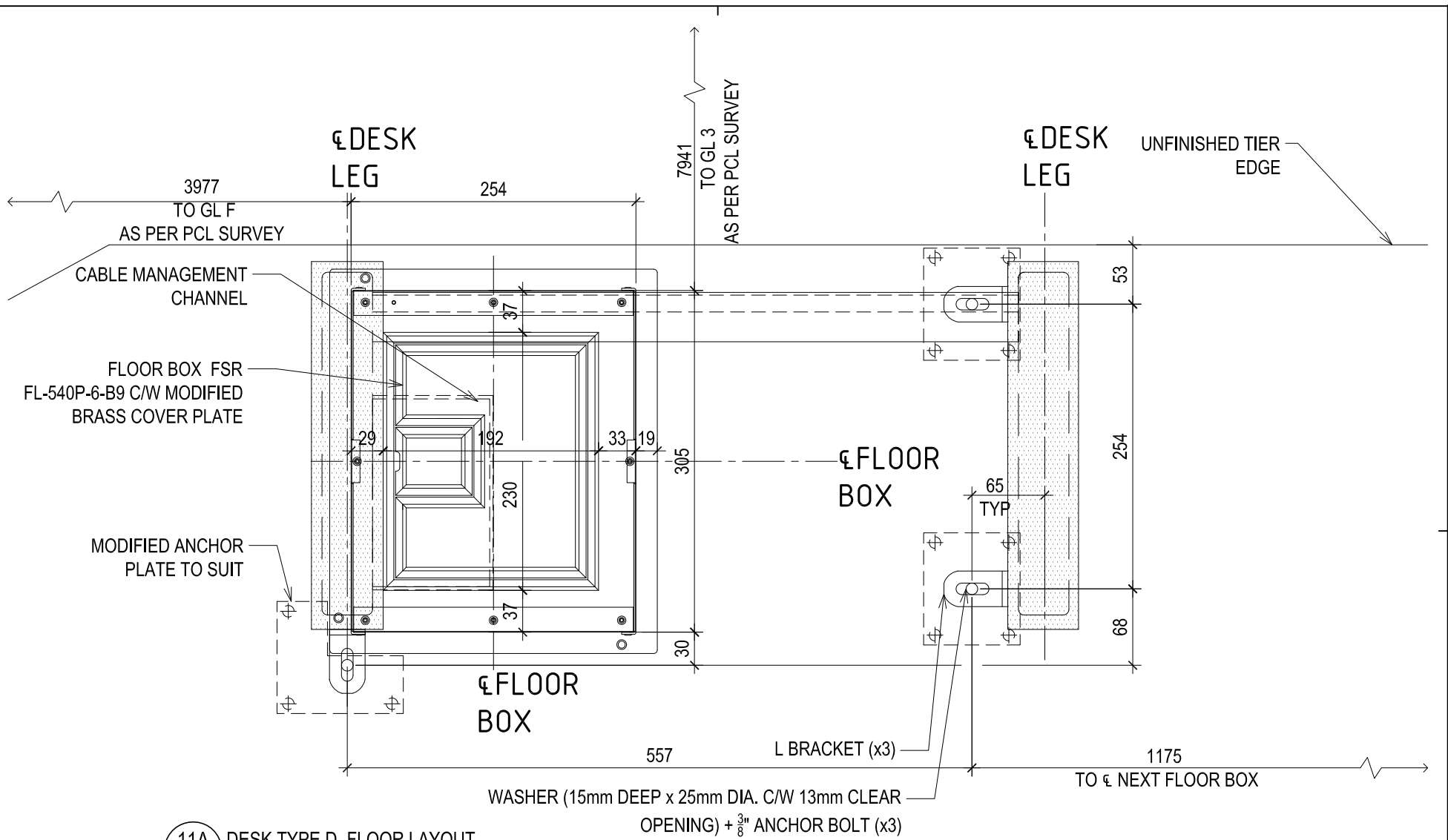
**2018-03-07**

---

Name of Person Signing

Signature

Date

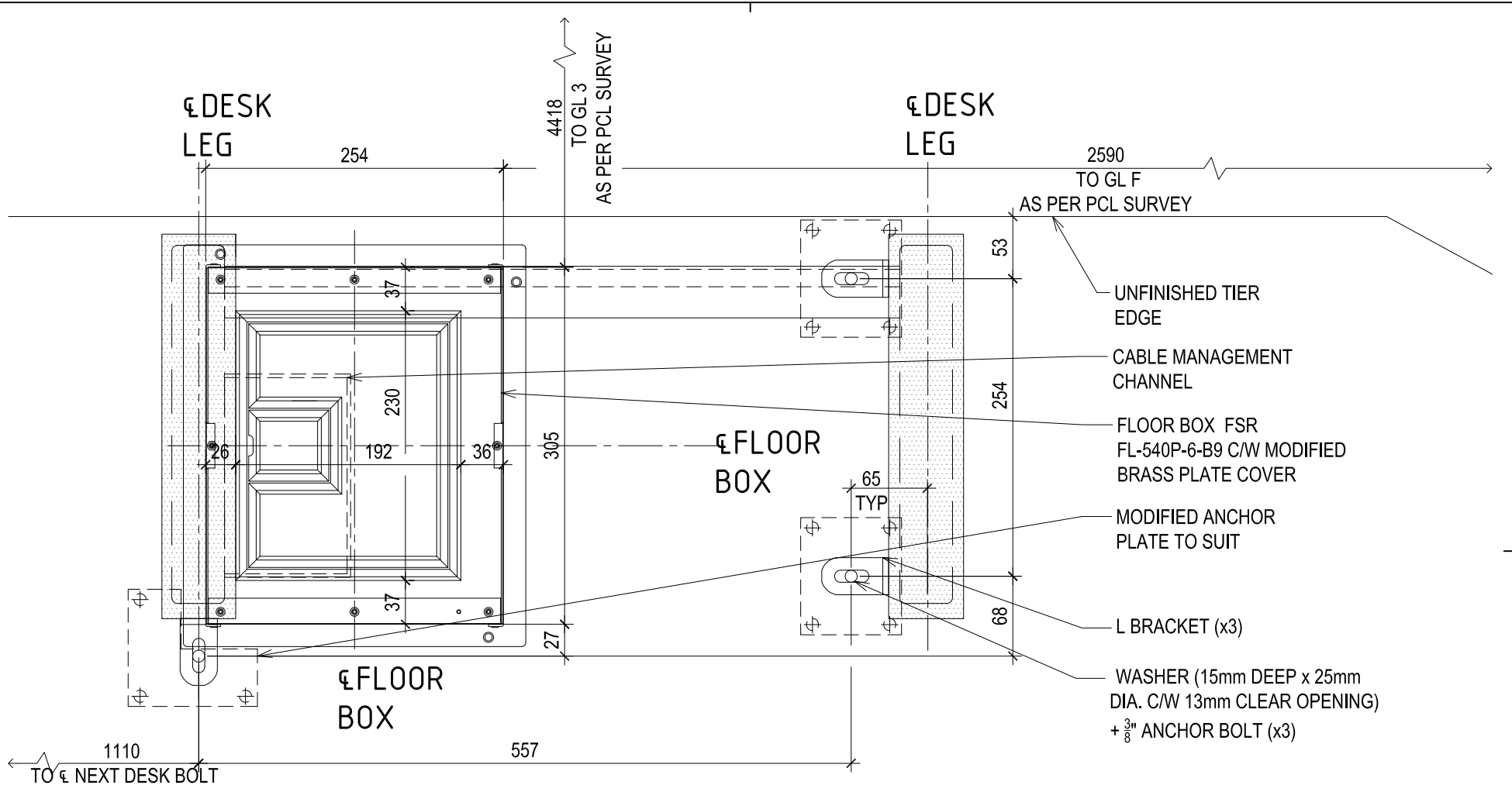


**11A** DESK TYPE D FLOOR LAYOUT  
 AL-622a 1:5

 National Centre of Expertise Architectural and Engineering Services Real Property Services Branch Centre d'expertise nationale Services d'architecture et génie Direction générale des services Immobiliers	ARCOP FOURNIER GERSOVITZ MOSS ARCHITECTS IN JOINT VENTURE ARCHITECTES EN CONSORTIUM MONTREAL: 1425 SHERBROOKE STREET 1000 MONTRÉAL, QUÉBEC H3B 2G4 TELEPHONE: 514 675 0271 FAX: 514 675 0961 OTTAWA: 101 SPADINA STREET OTTAWA, ONTARIO K1P 5H6 TELEPHONE: 613 992 3376 FAX: 613 992 2020	PROJET / PROJECT: WEST BLOCK REHABILITATION PROJECT ÉMIS POUR/FOR: FI-0604 PROJECT NO.: R.011801.188
		TITRE / TITLE: DESK TYPE D MODIFICATIONS- WEST UPPER DESK RÉFÉRENCE / REFERENCE: AL-622a REV-9 PROJECT MANAGER: PAUL FRAME
ÉCHELLE / SCALE: 1:5 PRÉP. PAR / PREP. BY: NS DATE: 2018/03/06 PAGE: AL-622a-01		



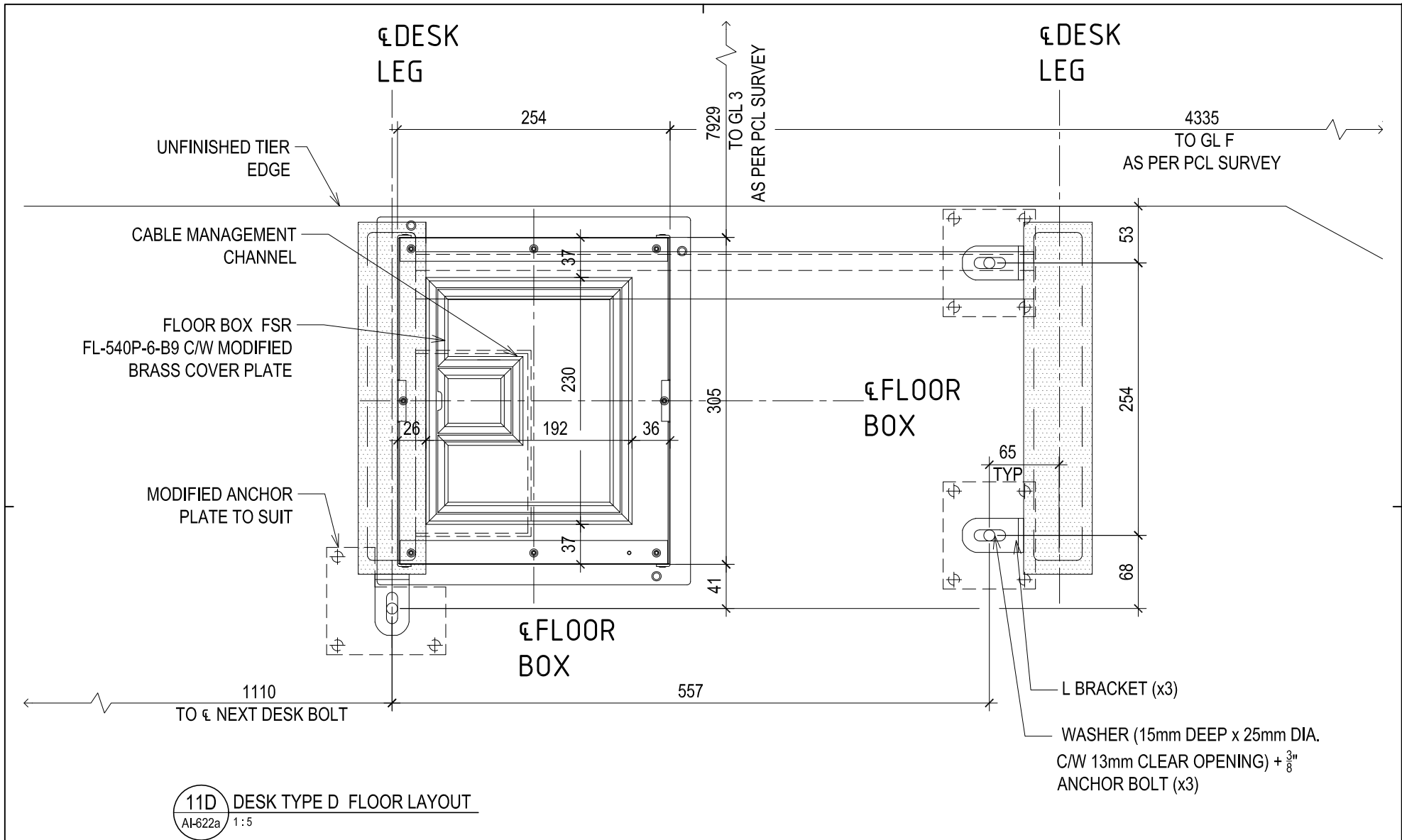




11C DESK TYPE D FLOOR LAYOUT  
 AI-622a 1:5

 <b>National Centre of Expertise</b> Architectural and Engineering Services Real Property Services Branch  <b>Centre d'expertise nationale</b> Services d'architecture et génie Direction générale des services Immobiliers	<b>ARCOP          FOURNIER          GERSOVITZ          MOSS</b>  <small>ARCHITECTS IN JOINT VENTURE          ARCHITECTES EN CONSORTIUM</small>	<b>PROJECT</b> WEST BLOCK REHABILITATION PROJECT	<b>ÉMIS POUR/FOR</b> FI-0604	<b>PROJECT NO.</b> R.011801.188
		<b>TITLE</b> DESK TYPE D MODIFICATIONS- EAST LOWER DESK	<b>RÉFÉRENCE          REFERENCE</b> AI-622a REV-9	<b>PROJECT MANAGER</b> PAUL FRAME
<b>ÉCHELLE          SCALE</b> 1:5		<b>PRÉP. PAR          PREP. BY</b> NS	<b>DATE</b> 2018/03/06	<b>PAGE</b> AI-622a-03





 National Centre of Expertise Architectural and Engineering Services Real Property Services Branch  Centre d'expertise nationale Services d'architecture et génie Direction générale des services Immobiliers	<b>ARCOP FOURNIER GERSOVITZ MOSS</b>  <small>ARCHITECTS IN JOINT VENTURE ARCHITECTES EN CONSORTIUM</small>	PROJECT WEST BLOCK REHABILITATION PROJECT	ÉMIS POUR/FOR FI-0604	PROJECT NO. R.011801.188
		TITLE DESK TYPE D MODIFICATIONS- EAST UPPER DESK	RÉFÉRENCE AL-622a REV-9	PROJECT MANAGER PAUL FRAME
ÉCHELLE SCALE 1:5	PRÉP. PAR PREP. BY NS	DATE 2018/03/06	PAGE <b>AL-622a-04</b>	

