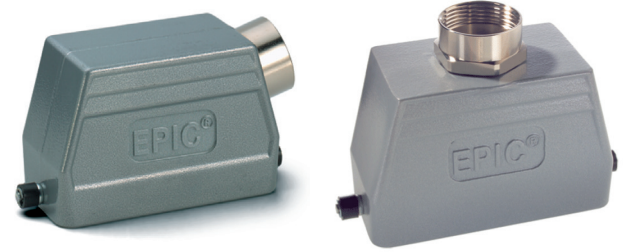
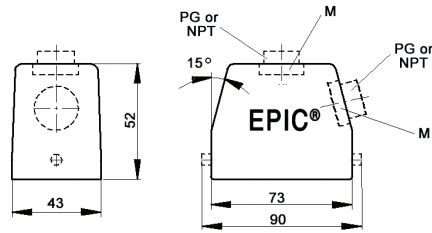


# EPIC® HB 10 Standard Hoods

## Single Lever Bolts



all dimensions are in mm.

<b>Technical Data</b>				
<b>Specifications:</b>	DIN 43652	<b>IP Protection Class:</b>	NEMA 4, NEMA 12, IP65	
<b>Temperature Range:</b>	-40°C to + 125°C	<b>Material:</b>	Powder-coated aluminum alloy	

Size of Entry	PG	NPT	Metric	PG	Part Number	NPT	Metric	Complete the Installation: SKINTOP® Strain Relief			
								PG Plastic	PG Metal	Metric Plastic	Metric Metal
<b>Top Entry</b>											
16		1/2"	20	100409	100409NP	19040900*		53015040	52015740	53111020	53112020
21		3/4"	25	100407	100407NP	19040700*		53015050	52015750	53111030	53112030
<b>Side Entry</b>											
16		1/2"	20	100429	100429NP	19042900		53015040	52015740	53111020	53112020
21		3/4"	25	100428	100428NP	19042800		53015050	52015750	53111030	53112030

\* Metric top-entry hoods do not come with a neck.

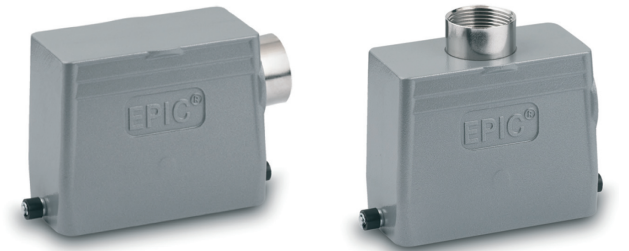
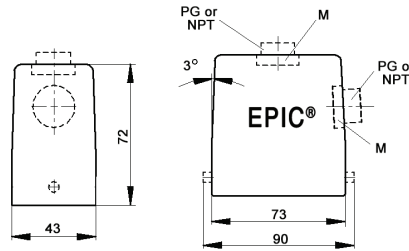
**Approvals**

**Complete the Installation**

HB Dust Covers page 419

# EPIC® HB 10 High Profile Hoods

## Single Lever Bolts



all dimensions are in mm.

<b>Technical Data</b>				
<b>Specifications:</b>	DIN 43652	<b>IP Protection Class:</b>	NEMA 4, NEMA 12, IP65	
<b>Temperature Range:</b>	-40°C to + 125°C	<b>Material:</b>	Powder-coated aluminum alloy	

Size of Entry	PG	NPT	Metric	PG	Part Number	NPT	Metric*	Complete the Installation: SKINTOP® Strain Relief			
								PG Plastic	PG Metal	Metric Plastic	Metric Metal
<b>Top Entry</b>											
21		3/4"	25	700442	700442NP	79044200		53015050	52015750	53111030	53112030
29		1"	32	700444	700444NP	79044400		53015060	52015760	53111040	53112040
<b>Side Entry</b>											
21		3/4"	25	700542	700542NP	79054200		53015050	52015750	53111030	53112030
29		1"	32	700544	700544NP	79054400		53015060	52015760	53111040	53112040

\* Metric hoods do not come with a neck.

**Approvals**

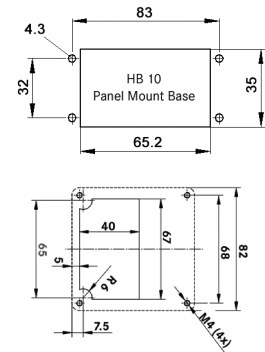
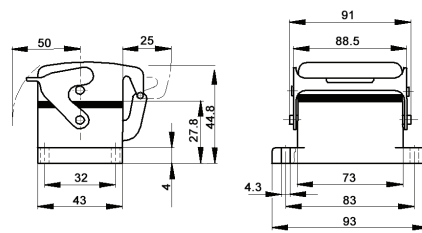
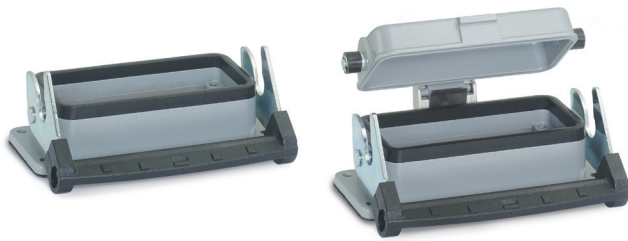
**Complete the Installation**

HB Dust Covers page 419

Photographs are not to scale and are not true representations of the products in question.  
If not otherwise specified, all values relating to the product are nominal values. For current information go to our website.

# EPIC® HB 10 Panel Mount Bases

## Single Lever

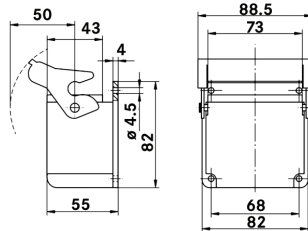
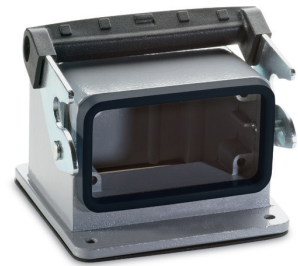


all dimensions are in mm.

### Approvals



HB 10 Right Angle Panel Mount Base



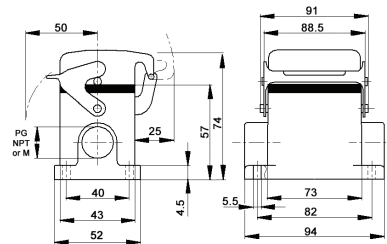
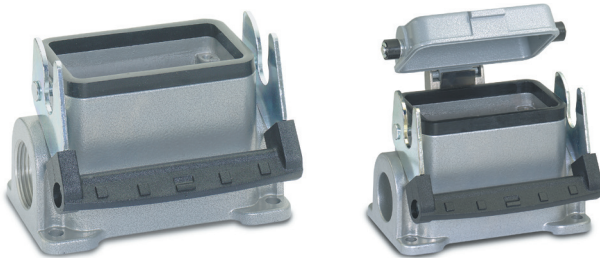
Description	Part Number
Panel Mount Base	10032900
Panel Mount Base with Dust Cover	10033900
Right-Angle Panel Mount Base	44423026

### Technical Data

Specifications:	DIN 43652	Protection Class:	NEMA 4, NEMA 12, IP65
Temperature Range:	-40°C to + 125°C	Material:	Powder-coated aluminum alloy

# EPIC® HB 10 Surface Mount Bases

## Single Lever



all dimensions are in mm.

### Technical Data

Specifications:	DIN 43652	Protection Class:	NEMA 4, NEMA 12, IP65
Temperature Range:	-40°C to + 125°C	Material:	Powder-coated aluminum alloy

PG	Size of Entry		PG	Part Number		Complete the Installation: SKINTOP® Strain Relief			
	NPT	Metric		NPT	Metric	PG Plastic	PG Metal	Metric Plastic	Metric Metal
<b>2 Entries</b>									
16	1/2"	20	100359	100359NP	19035900	53015040	52015740	53111020	53112020
-	-	25	-	-	79061600	-	-	53111030	53112030
<b>1 Entry</b>									
16	1/2"	20	100349	100349NP	19034900	53015040	52015740	53111020	53112020
21	3/4"	25	100347	100347NP	19034700	53015050	52015750	53111030	53112030
<b>2 Entries with Dust Cover</b>									
16	1/2"	20	100389	100389NP	19038900	53015040	52015740	53111020	53112020
<b>1 Entry with Dust Cover</b>									
16	1/2"	20	100369	100369NP	19036900	53015040	52015740	53111020	53112020
-	-	25	-	-	79064600	-	-	53111030	53112030

### Approvals



**Complete the Installation**

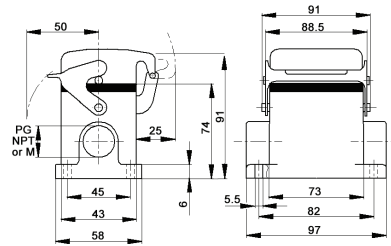
HB Dust Covers  
page 419

Photographs are not to scale and are not true representations of the products in question.

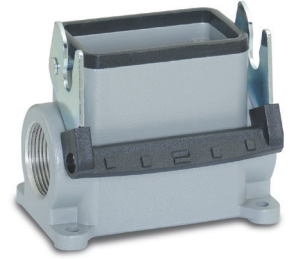
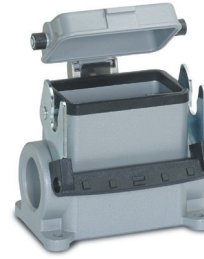
If not otherwise specified, all values relating to the product are nominal values. For current information go to our website.

# EPIC® HB 10 High Profile Surface Mount Bases

Single Lever



all dimensions are in mm.



Technical Data			
Specifications:	DIN 43652	Protection Class:	NEMA 4, NEMA 12, IP65
Temperature Range:	-40°C to + 125°C	Material:	Powder-coated aluminum alloy

PG	Size of Entry		PG	Part Number		Complete the Installation: SKINTOP® Strain Relief			
	NPT	Metric		NPT	Metric	PG Plastic	PG Metal	Metric Plastic	Metric Metal
<b>2 Entries</b>									
21	3/4"	25	700612	700612NP	79061200	53015050	52015750	53111030	53112030
29	1"	32	700614	700614NP	79061400	53015060	52015760	53111040	53112040
<b>1 Entry</b>									
21	3/4"	25	700602	700602NP	79060200	53015050	52015750	53111030	53112030
29	1"	32	700604R	700604NP	79060400	53015060	52015760	53111040	53112040
<b>2 Entries with Dust Cover</b>									
21	3/4"	25	700652	700652NP	79065200	53015050	52015750	53111030	53112030
29	1"	32	700654	700654NP	79065400	53015060	52015760	53111040	53112040
<b>1 Entry with Dust Cover</b>									
21	3/4"	25	700642	700642NP	79064200	53015050	52015750	53111030	53112030
29	1"	32	700644	700644NP	79064400	53015060	52015760	53111040	53112040

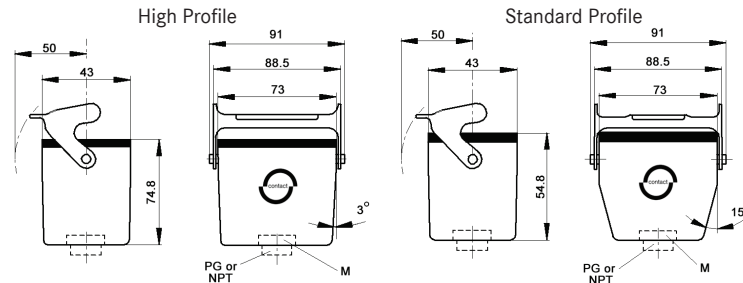
**Approvals**

**Complete the Installation**

HB Dust Covers page 419

# EPIC® HB 10 Cable Coupler Hoods

Single Lever



all dimensions are in mm.



Technical Data			
Specifications:	DIN 43652	Protection Class:	NEMA 4, NEMA 12, IP65
Temperature Range:	-40°C to + 125°C	Material:	Powder-coated aluminum alloy

PG	Size of Entry		PG	Part Number		Complete the Installation: SKINTOP® Strain Relief			
	NPT	Metric		NPT	Metric*	PG Plastic	PG Metal	Metric Plastic	Metric Metal
<b>Standard Profile</b>									
16	1/2"	20	100469	100469NP	19046900	53015040	52015740	53111020	53112030
21	3/4"	25	700422	700422NP	79042200	53015050	52015750	53111030	53112030
<b>High Profile</b>									
21	3/4"	25	700424	700424NP	79042400	53015050	52015750	53111030	53112030
29	1"	32	700426	700426NP	79042600	53015060	52015760	53111040	53112040

\* Metric hoods do not come with a neck.

**Approvals**

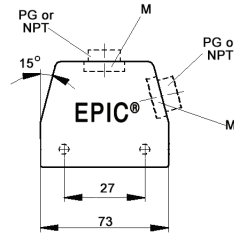
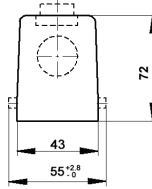
**Complete the Installation**

HB Dust Covers page 419

Photographs are not to scale and are not true representations of the products in question. If not otherwise specified, all values relating to the product are nominal values. For current information go to our website.

# EPIC® HB 10 Standard Hoods

## Double Lever Bolts



all dimensions are in mm.

### Technical Data

<b>Specifications:</b>	DIN 43652	<b>Protection Class:</b>	NEMA 4, NEMA 12, IP65
<b>Temperature Range:</b>	-40°C to + 125°C	<b>Material:</b>	Powder-coated aluminum alloy

PG	Size of Entry		PG	Part Number		Complete the Installation: SKINTOP® Strain Relief			
	NPT	Metric		NPT	Metric	PG Plastic	PG Metal	Metric Plastic	Metric Metal
<b>Top Entry</b>									
16	1/2"	20	100400	100400NP	19040000*	53015040	52015740	53111020	53112020
21	3/4"	25	100401	100401NP	19040100*	53015050	52015750	53111030	53112030
<b>Side Entry</b>									
16	1/2"	20	100420	100420NP	19042000	53015040	52015740	53111020	53112020
21	3/4"	25	100421	100421NP	19042100	53015050	52015750	53111030	53112030

\* Metric top-entry hoods do not come with a neck.

### Approvals

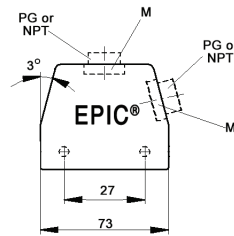
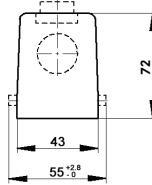


**Complete the Installation**

HB Dust Covers  
page 419

# EPIC® HB 10 High Profile Hoods

## Double Lever Bolts



all dimensions are in mm.

### Technical Data

<b>Specifications:</b>	DIN 43652	<b>Protection Class:</b>	NEMA 4, NEMA 12, IP65
<b>Temperature Range:</b>	-40°C to + 125°C	<b>Material:</b>	Powder-coated aluminum alloy

PG	Size of Entry		PG	Part Number		Complete the Installation: SKINTOP® Strain Relief			
	NPT	Metric		NPT	Metric*	PG Plastic	PG Metal	Metric Plastic	Metric Metal
<b>Top Entry</b>									
21	3/4"	25	700504	700504NP	79050400	53015050	52015750	53111030	53112030
29	1"	32	700506	700506NP	79050600	53015060	52015760	53111040	53112040
<b>Side Entry</b>									
21	3/4"	25	700524	700524NP	79052400	53015050	52015750	53111030	53112030
29	1"	32	700526	700526NP	79052600	53015060	52015760	53111040	53112040

\* Metric hoods do not come with a neck.

### Approvals



**Complete the Installation**

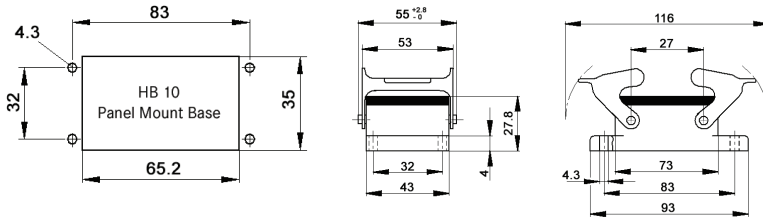
HB Dust Covers  
page 419

Photographs are not to scale and are not true representations of the products in question.

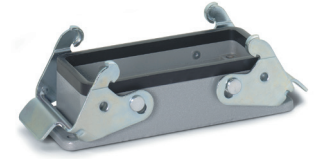
If not otherwise specified, all values relating to the product are nominal values. For current information go to our website.

# EPIC® HB 10 Panel Mount Bases

## Double Levers



all dimensions are in mm.



### Technical Data

<b>Specifications:</b>	DIN 43652	<b>IP Protection Class:</b>	NEMA 4, NEMA 12, IP65
<b>Temperature Range:</b>	-40°C to + 125°C	<b>Material:</b>	Powder-coated aluminum alloy

Description	Part Number
Panel Mount Base	100320C0

### Approvals

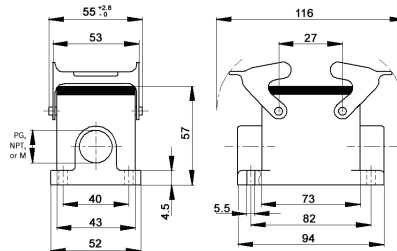


**Complete the Installation**

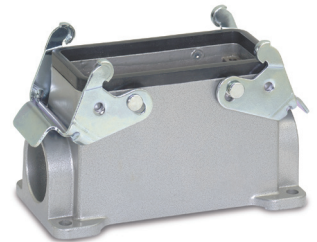
HB Dust Covers  
page 419

# EPIC® HB 10 Surface Mount Bases

## Double Levers



all dimensions are in mm.



### Technical Data

<b>Specifications:</b>	DIN 43652	<b>IP Protection Class:</b>	NEMA 4, NEMA 12, IP65
<b>Temperature Range:</b>	-40°C to + 125°C	<b>Material:</b>	Powder-coated aluminum alloy

PG	Size of Entry		PG	Part Number		Complete the Installation: SKINTOP® Strain Relief			
	NPT	Metric		NPT	Metric	PG Plastic	PG Metal	Metric Plastic	Metric Metal
<b>2 Entries</b>									
16	1/2"	20	100350	100350NP	19035000	53015040	52015740	53111020	53112020
—	—	25	—	—	19035100	—	—	53111030	53112030
<b>1 Entry</b>									
16	1/2"	20	100340	100340NP	19034000	53015040	52015740	53111020	53112020
—	—	25	—	—	19034100	—	—	53111030	53112030

### Approvals



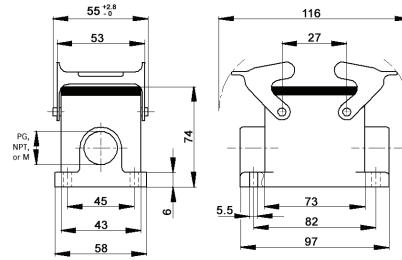
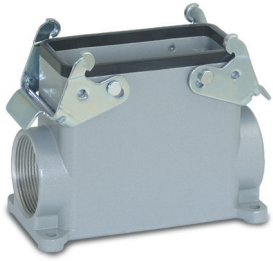
**Complete the Installation**

HB Dust Covers  
page 419

Photographs are not to scale and are not true representations of the products in question. If not otherwise specified, all values relating to the product are nominal values. For current information go to our website.

# EPIC® HB 10 High Profile Surface Mount Bases

## Double Levers



all dimensions are in mm.

### Technical Data


<b>Specifications:</b>	DIN 43652	<b>IP Protection Class:</b>	NEMA 4, NEMA 12, IP65
<b>Temperature Range:</b>	-40°C to + 125°C	<b>Material:</b>	Powder-coated aluminum alloy

PG	Size of Entry		PG	Part Number		Complete the Installation: SKINTOP® Strain Relief			
	NPT	Metric		NPT	Metric	PG Plastic	PG Metal	Metric Plastic	Metric Metal
<b>2 Entries</b>									
21	3/4"	25	700362	700362NP	79036200	53015050	52015750	53111030	53112030
29	1"	32	700364	700364NP	79036400	53015060	52015760	53111040	53112040
<b>1 Entry</b>									
21	3/4"	25	700352	700352NP	79035200	53015050	52015750	53111030	53112030
29	1"	32	700354	700354NP	79035400	53015060	52015760	53111040	53112040

### Approvals



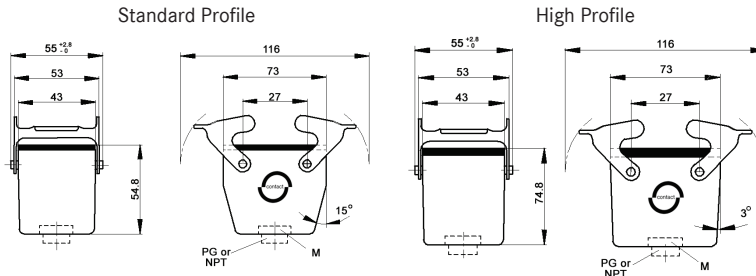
**Complete the Installation**



HB Dust Covers  
page 419

# EPIC® HB 10 Cable Coupler Hoods

## Double Levers



all dimensions are in mm.

### Technical Data

<b>Specifications:</b>	DIN 43652	<b>IP Protection Class:</b>	NEMA 4, NEMA 12, IP65
<b>Temperature Range:</b>	-40°C to + 125°C	<b>Material:</b>	Powder-coated aluminum alloy


PG	Size of Entry		PG	Part Number		Complete the Installation: SKINTOP® Strain Relief			
	NPT	Metric		NPT	Metric*	PG Plastic	PG Metal	Metric Plastic	Metric Metal
<b>Standard Profile</b>									
16	1/2"	20	100460	100460NP	19046000	53015040	52015740	53111020	53112030
21	3/4"	25	700402	700402NP	79040200	53015050	52015750	53111030	53112030
<b>High Profile</b>									
21	3/4"	25	700404R	700404NP	79040400	53015050	52015750	53111030	53112030
29	1"	32	700406	700406NP	79040600	53015060	52015760	53111040	53112040

\* Metric hoods do not come with a neck.

### Approvals



**Complete the Installation**



HB Dust Covers  
page 419