

EPIC® HEE Series

Inserts with High Crimp Contact Density for Power & Control Applications



The EPIC® HEE series of crimp-terminated inserts is a high-density companion to the popular EPIC® HBE series. Offering the same voltage and current ratings (600V AC; 16A), it provides a significant increase in contact density (a 67%- 100% increase) within the same footprint dimensions as an equivalent-sized HBE insert. EPIC® HEE inserts are ideal for applications in the automotive industry and any other industrial application requiring high density contacts and immunity to vibration.

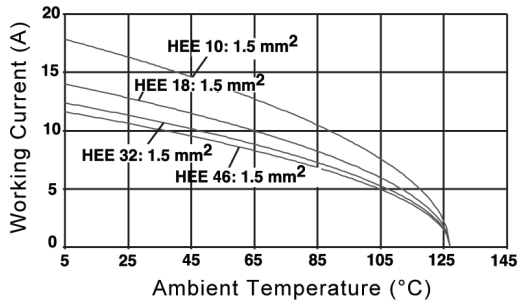
Technical Data

Number of Contacts:	10, 18, 32, 46, 64, 92 (+PE)	Test Voltage:	6 kV
Temperature Range:	-40°C to +100°C	Rated Voltage:	
- Short-term:	up to +125°C	- UL/CSA:	600V
		- IEC:	500V
Pollution Level:	3	Rated Current:	16A
Mating Cycles:	- Per DIN EN 61984:2008 Service Life Test: Tested to 100 cycles and passed - Per Contact Thermal Test: Useful service up to 500 cycles is possible at rated voltage and current*	Wire Size:	20- 12 AWG (0.5-4 mm ²)
		Contact Material:	Silver- or gold-plated copper alloy
		Contact Resistance:	≤ 2 mΩ

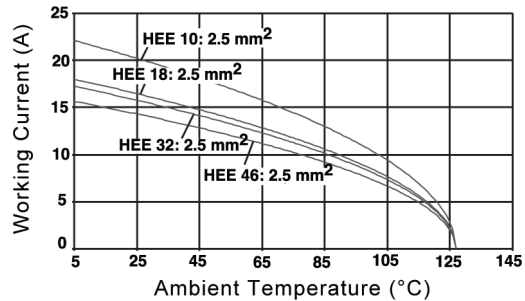
* In dry, non-conductive, non-corrosive environments when protected in a housing rated at least IP54 and disconnected for cycling and maintenance only.

EPIC® HEE Inserts: Derating Curves

EPIC® HEE Crimp-Terminated
16 AWG (1.5 mm²)

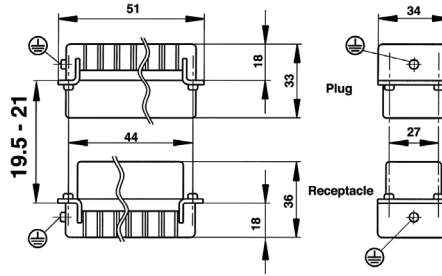
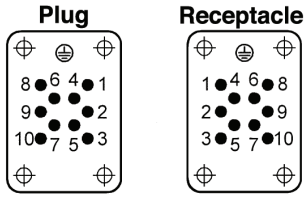


EPIC® HEE Crimp-Terminated
14 AWG (2.5 mm²)

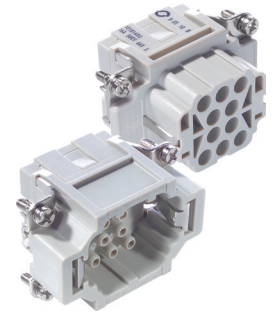


EPIC® HEE 10 Inserts
Crimp-Terminated

view from cable side



all dimensions are in mm.



contacts sold separately, see below

Approvals



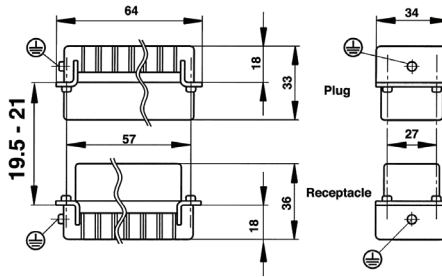
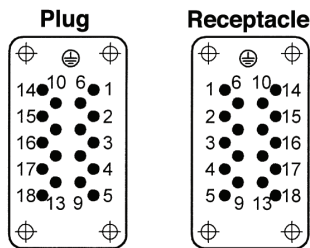
Compatible Housing

EPIC® HB 6
page 372

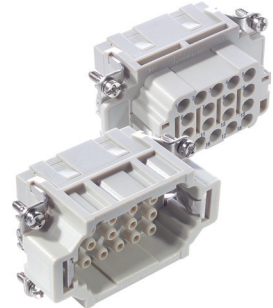
Description	Plug	Receptacle
Crimp-Terminated: Machined Contacts	10180400	10181400

EPIC® HEE 18 Inserts
Crimp-Terminated

view from cable side



all dimensions are in mm.



contacts sold separately, see below

Approvals



Compatible Housing

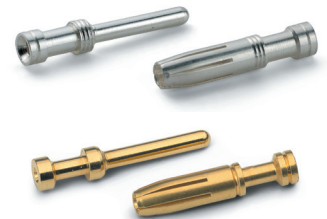
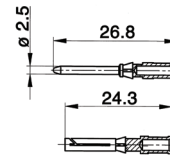
EPIC® HB 10
page 375

Description	Plug	Receptacle
Crimp-Terminated: Machined Contacts	10182400	10183400

Machined Contacts
2.5 mm Diameter

Contact Size		Stripping Length (mm)		# of Marking Tracks	Silver Contacts		Gold Contacts	
mm ²	AWG	Pin	Socket		Pin	Socket	Pin	Socket
0.5	20	7.4	7.3	—	11190000	11195000	11192000	11197000
0.75 - 1.0	18	7.4	7.3	1	11190100	11195100	11192100	11197100
1.5	16	7.4	7.3	2	11190200	11195200	11192200	11197200
2.5	14	7.4	7.3	3	11190300	11195300	—	—
4.0	12	7.4	7.3	—	11190400	11195400	—	—

part number = 1 contact, sold in bags of 100



Complete the Installation

Crimp Tool: 11147000	Crimp Dies: 11147100	Locator: 11147200	Removal Tool: 11182500
-------------------------	-------------------------	----------------------	---------------------------



Photographs are not to scale and are not true representations of the products in question. If not otherwise specified, all values relating to the product are nominal values. For current information go to our website.