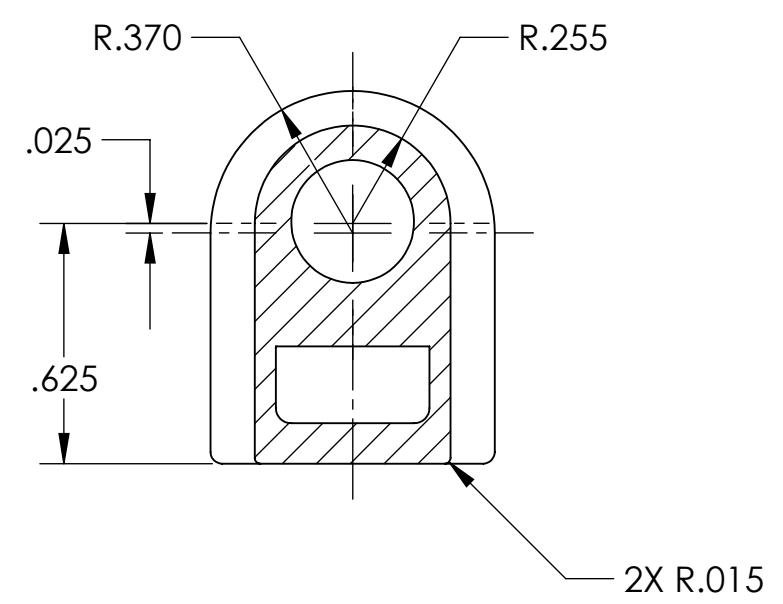


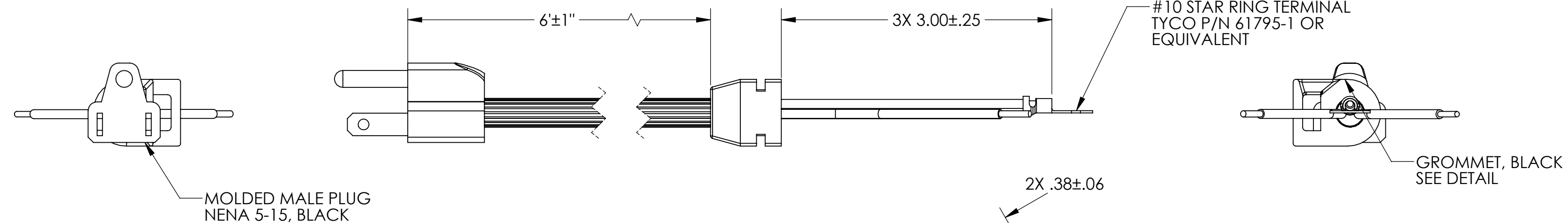
SECTION A-A
SCALE 2:1



SECTION B-B
SCALE 2:1

NOTE:
MATERIAL: 85 SHORE A DUROMETER PVC.

GROMMET DETAIL



#18 GAUGE, 3 CONDUCTOR STRANDED BARE COPPER WIRE. TYPE SJT, RIBBED, BLACK, .03 WALL, 105°C MIN RATING. HANK, FLATTEN, TIE, 10" LEAD.

- NOTES:**
- 1) ALL SHIPMENTS MUST BE LABELED PER UL SPECIFICATIONS.
 - 2) UL NOTE: MUST BE UL RECOGNIZED WIRING HARNESS. ALL TERMINALS MUST BE UL LISTED OR RECOGNIZED.
 - 3) COHESION OF GROMMET & CORD MUST WITHSTAND THE FOLLOWING CONDITIONS WITHOUT DISPLACEMENT OR CREEPAGE: 35 LB PULL TEST FOR ONE MINUTE. TORQUE TEST, BOTH CW AND CCW, FOR ONE MINUTE. (0.166 FT-LB PER EACH 0.1 INCH OF CORD DIAMETER).

REV	DATE	ECN NO.	REVISION	BY	REV	DATE	ECN NO.	REVISION	BY	MATERIAL:	UNLESS OTHERWISE NOTED, THIS DRAWING CONFORMS TO ANSI Y14 DRAFTING STANDARD.	DRAWN BY	DATE	<p>by Gardner Denver</p> <p>This document contains confidential and trade secret information which is the property of Gardner Denver Thomas, Inc. (Thomas) and receipt or possession does not convey any rights to lease, sell, or otherwise disclose said information. Reproduction or use of said information for any purpose other than that in connection with which said information was supplied may not be made without express written permission of Thomas. This document is to be returned to Thomas upon request and in all events upon completion of the purpose for which it is loaned.</p>
B	7/1/14	14-0655	REVD & REDWN IN SOLIDWORKS, ADD MIN, (16/30) WAS 16/30.	RBA						UNLESS OTHERWISE NOTED, SURFACE FINISH MEASURED IN Ra (µin)	CHECKED BY	DATE		
B	7/1/14	14-0655	DELE AND CSA, CSA COMPLIANCE: NOTE	RBA						UNSPECIFIED RADII: .03 FILLETS: .03 DRAFT: 2°	SRL	05/31/2017		
C	5/25/17	17-0629	ADD: MATL...PVC...09 WAS .10, DEL 16/30 REF STRANDS	RBA						CONTROL CHARACTERISTIC	SCALE	1:1		
										REL FOR PROD DATE: 9/24/03 SUPERSEDES: 638882 C	ECN NO.: 03-1418 ECN NO.: 03-1410			TITLE CORD-VDE 6' INTEGRAL GROMMET PART NO. 638882 REV C