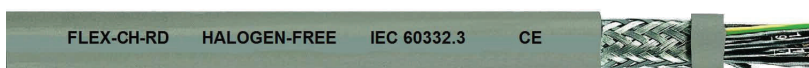


FLEX-CH-RD Reduced OD



FLEX-CH-RD is a low smoke, zero halogen, cost effective, reduced diameter, flexible, overall shielded, multi-conductor power and control cable designed for use in all electrical equipment in dry and damp conditions. For use in flexible or stationary applications under medium mechanical stress with free movement without any tensile stress, loads or forced movements. Common applications include connections to machinery, data processing, production lines, conveyor belts, ventilation and air-conditioning systems. Found in public facilities, airports, railway stations, plant construction, steel mills, offices and in areas exposed to high risk of flame or fires. The flame retardant, halogen-free jacket gives off no corrosive gases and low smoke when exposed to fire, making **FLEX-CH-RD** suitable in areas of high risk or potential for fire. The overall tinned copper braid is recommended where there is electrical interference, distorted signals or EMI emissions. The common inner jacket is replaced by a plastic foil separator giving this cable a reduced diameter, bending radius and weight. Outdoor installation is not permitted.



Construction:

- Fine bare copper strands
- Strands to VDE-0295 Class-5, IEC 60228 CI-5
- Special Halogen-Free core insulation
- Color code VDE-0293 - black & numbered
- Plastic foil separator
- 85% Tinned Copper Braid
- Halogen-Free outer jacket - gray (RAL 7001)
- "OZ" denotes no ground wire
- **Low oil & chemical resistant**

Technical:

- Working voltage: 300/500 volts
- Test voltage: 3000 volts
- Flexing bending radius: 20 x Ø
- Static bending radius: 6 x Ø
- Flexing temp: -15° C to +70° C
- Static temp: -40° C to +70° C
- Flame retardant: **IEC 60332.3**
- Insulation resistance: 20 MΩ x km

Approvals:

- VDE-0245, 0250, 0281, 0282
- CE Low Voltage Directive 73/23/EEC and 93/68/EEC
- ROHS compliant

PART NUMBER	CORES	NOMINAL OD	CU LBS/MFT	WT LBS/MFT
20 AWG (16/32) 0,50mm²				
1872002 OZ	2	0.228" / 5.8mm	24	34
1862003 **	3	0.240" / 6.1mm	29	41
1862004 **	4	0.356" / 6.5mm	33	48
1862005 **	5	0.276" / 7.0mm	38	57
1862007 **	7	0.299" / 7.6mm	46	69
1862012	12	0.390" / 9.9mm	70	111
1862018	18	0.457" / 11.6mm	95	158
1862025	25	0.535" / 13.6mm	150	217
18 AWG (24/32) 0,75mm²				
1871802 OZ	2	0.244" / 6.2mm	29	40
1861803 **	3	0.256" / 6.5mm	35	52
1861804 **	4	0.276" / 7.0mm	41	58
1861805 **	5	0.303" / 7.7mm	48	71
1861807 **	7	0.327" / 8.3mm	60	87
1861812 **	12	0.429" / 10.9mm	93	142
1861818	18	0.500" / 12.7mm	142	206
1861825	25	0.591" / 15.0mm	188	277
17 AWG (32/32) 1,00mm²				
1871702 OZ	2	0.256" / 6.5mm	34	53
1861703 **	3	0.268" / 6.8mm	42	59
1861704 **	4	0.291" / 7.4mm	50	71
1861705 **	5	0.319" / 8.1mm	59	83
1861707 **	7	0.346" / 8.8mm	75	104
1861712 **	12	0.453" / 11.5mm	124	168
1861718	18	0.543" / 13.8mm	180	247
1861725 **	25	0.634" / 16.1mm	237	331
16 AWG (30/30) 1,50mm²				
1871602 OZ	2	0.280" / 7.1mm	44	61
1861603 **	3	0.295" / 7.5mm	55	75
1861604 **	4	0.323" / 8.2mm	67	95
1861605 **	5	0.350" / 8.9mm	80	108

Sizes continued on next page.

FLEX-CH-RD Reduced OD



FLEX-CH-RD Sizes Continued. (16 AWG and Larger)

PART NUMBER	CORES	NOMINAL OD	CU LBS/MFT	WT LBS/MFT
16 AWG (30/30) 1,50mm² Cont.				
1861607	7	0.390" / 9.9mm	103	138
1861612	12	0.512" / 13.0mm	180	238
1861618	18	0.610" / 15.5mm	250	347
1861625	25	0.713" / 18.1mm	355	473
14 AWG (50/30) 2,50mm²				
1861402	2	0.327" / 8.3mm	64	85
1861403	3	0.354" / 9.0mm	79	105
1861404	4	0.390" / 9.9mm	99	135
1861405	5	0.433" / 11.0mm	118	166
1861407	7	0.469" / 11.9mm	170	210
1861412	12	0.626" / 15.9mm	258	351
12 AWG (56/28) 4,00mm²				
1861203	3	0.421" / 10.7mm	119	155
1861204	4	0.461" / 11.7mm	166	195
1861205	5	0.508" / 12.9mm	180	242
1861207	7	0.559" / 14.2mm	249	314
10 AWG (84/28) 6,00mm²				
1861003	3	0.492" / 12.5mm	161	213
1861004	4	0.547" / 13.9mm	230	293
1861005	5	0.606" / 15.4mm	296	342
1861007	7	0.665" / 16.9mm	342	444
8 AWG (80/26) 10,0mm²				
1860804	4	0.685" / 17.4mm	359	459
1860805	5	0.768" / 19.5mm	397	553
1860807	7	0.846" / 21.5mm	550	716
6 AWG (128/26) 16,0mm²				
1860604	4	0.795" / 20.2mm	494	695
1860605	5	0.890" / 22.6mm	600	862
4 AWG (200/26) 25,0mm²				
1860404	4	0.988" / 25.1mm	757	1115
1860405	5	1.102" / 28.0mm	939	1325
2 AWG (280/26) 35,0mm²				
1860204	4	1.118" / 28.4mm	1037	1376
1860205	5	1.248" / 31.7mm	1282	1704
1 AWG (400/26) 50,0mm²				
1860104	4	1.339" / 34.0mm	1447	1937
2/0 AWG (356/24) 70,0mm²				
1862104	4	1.626" / 41.3mm	2025	3312
3/0 AWG (485/24) 50,0mm²				
1863104	4	1.819" / 46.2mm	2691	4487
4/0 AWG (614/24) 70,0mm²				
1864104	4	1.874" / 51.0mm	3398	5669

* Additional sizes may be available.

** Sizes available as FLEX-CH-RD-OZ (187) - no ground wire construction