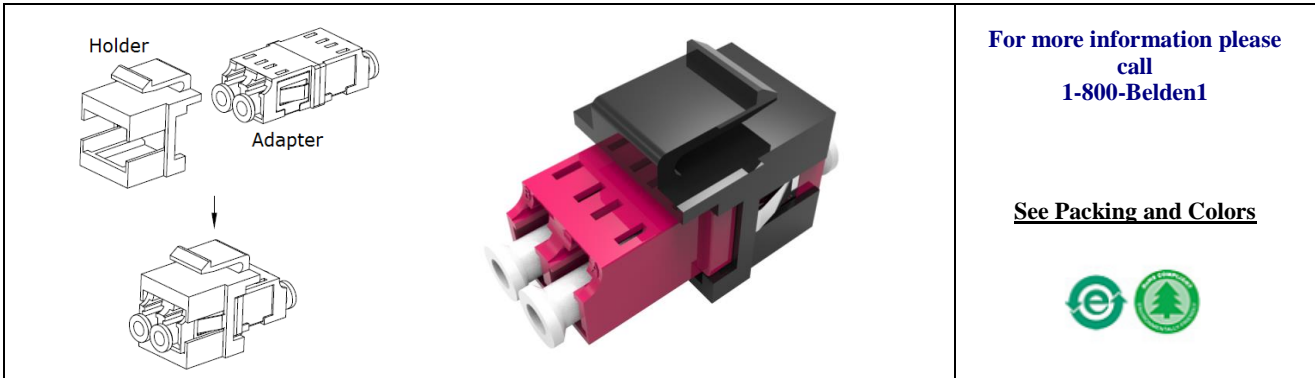


**AP100020XX~ AP100023XX**

**KeyConnect Fiber LC Duplex Adapter Module**



For more information please  
call  
**1-800-Belden1**

See Packing and Colors



**Description:**

KeyConnect Fiber LC Duplex Senior/Senior Interface Adapter Modules

**SUITABLE APPLICATIONS:**

Suitable Applications:	KeyConnect Fiber LC Duplex Adapter Module Compatible with KeyConnect-style Faceplate , Patch Panel, Surface Mount box(GOP box) etc. these products can be used in many different applications such as FiberExpress Solutions, Backbone, Telecommunications Room, Main Distribution Room
------------------------	---

**MATERIAL:**

Adapter Material	Polycarbonate
Sleeve Material	Zirconia Ceramic
Holder Material	ABS

**FEATURES**

- Meet the requirements specified in the TIA/EIA 604 FOCIS 10A standard that can guarantee the precision alignment for the connectors, which will make the insertion loss and return loss lower
- Completely fulfill the requirements specified in TIA/EIA 568 C.3
- Different adapter housing color for different fibers, which makes it easier for cable installation and management.
- Zirconia ceramic split sleeve enable reliable ferrule mating, maintaining plug retention strength.
- LC Duplex adapter assemble with holder preserves the modularity that compatible with current RJ45 faceplate, patch panel, Multi-User Outlet Box etc.

**MECHANICAL CHARACTERISTICS (CONNECTIVITY):**

Storage Temperature Range:	-40°C To +70°C
Installation Temperature Range:	-10°C To +60°C
Operating Temperature Range:	-10°C To +60°C

**APPLICABLE STANDARDS & ENVIRONMENTAL PROGRAMS:**

EU Directive 2011/65/EU (RoHS 2.0):	Yes
EU RoHS Compliance Date	Mar 2008

**SUITABILITY:**

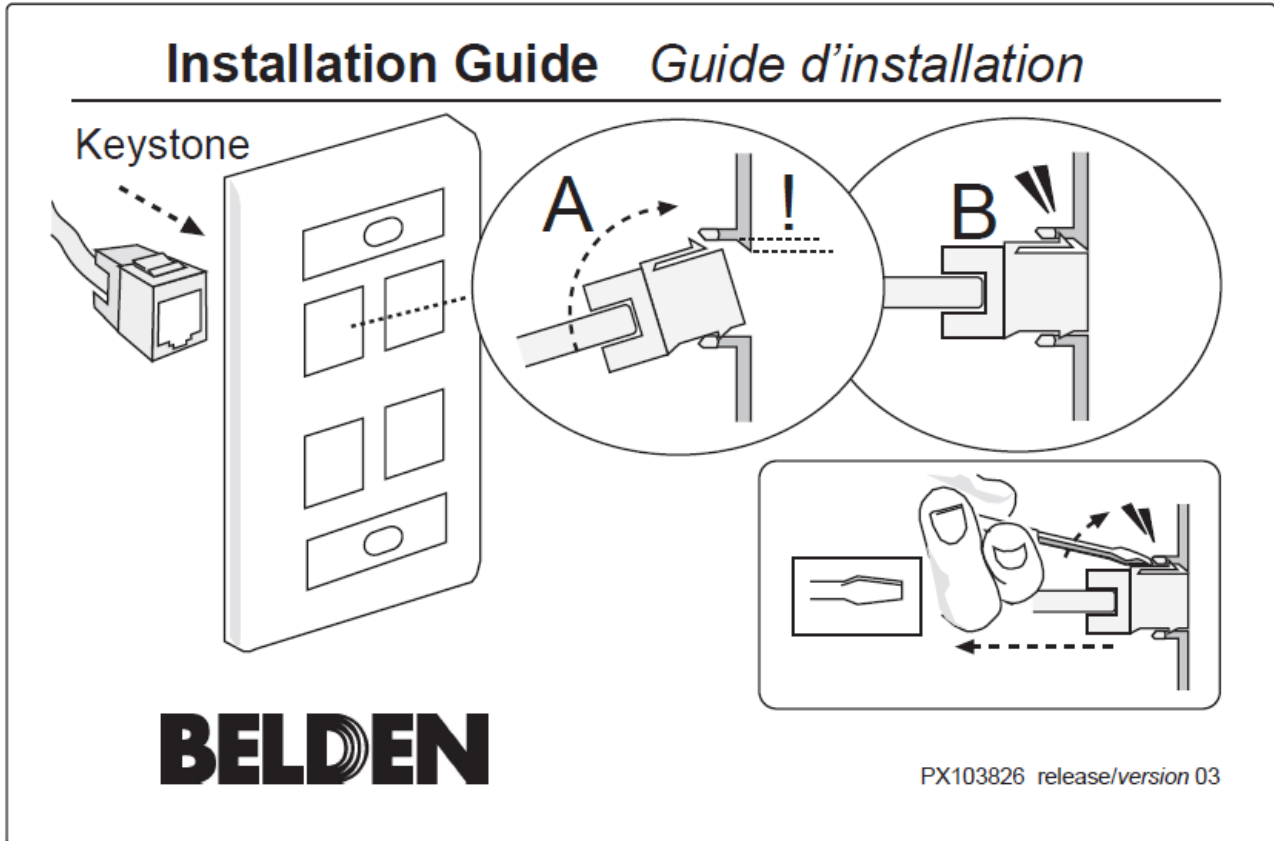
**AP100020XX~ AP100023XX**

**KeyConnect Fiber LC Duplex Adapter Module**

Suitability - Indoor

Yes

**INSTALLATION GUIDE DRAWING**



**PACKING AND COLORS:**

Item	Description	Adapter Color	Holder Color	Put-Up (pcs)
AP100020WH-	KeyConnect LC Duplex Senior-Senior Type fiber adapter module Single Mode	Blue	White	1EA
AP100020BK	KeyConnect LC Duplex Senior-Senior Type fiber adapter module Single Mode	Blue	Black	1EA
AP100021WH	KeyConnect LC Duplex Senior-Senior Type fiber adapter module SM APC	Green	White	1EA
AP100021BK	KeyConnect LC Duplex Senior-Senior Type fiber adapter module SM APC	Green	Black	1EA
AP100022WH	KeyConnect LC Duplex Senior-Senior Type fiber adapter module MM OM2	Aqua	White	1EA
AP100022BK	KeyConnect LC Duplex Senior-Senior Type fiber adapter module MM OM2	Aqua	Black	1EA
AP100023WH	KeyConnect LC Duplex Senior-Senior Type fiber adapter module MM OM3	Aqua	White	1EA

**AP100020XX~ AP100023XX**

**KeyConnect Fiber LC Duplex Adapter Module**

AP100023BK	KeyConnect LC Duplex Senior-Senior Type fiber adapter module MM OM3	Aqua	Black	1EA
AP100024WH	KeyConnect LC Duplex Senior-Senior Type fiber adapter module MM OM4	Erika Violet	White	1EA
AP100024BK	KeyConnect LC Duplex Senior-Senior Type fiber adapter module MM OM4	Erika Violet	Black	1EA

1EA adapter module packaged in a plastic bag, 50pcs bags packaged in the master carton.

Revision Number: 1

Revision Date: 3/4/2018

©Copyright 2018 Belden, Inc  
All Rights Reserved.

Although Belden ("Belden") makes every reasonable effort to ensure their accuracy at the time of this publication, information and specifications described herein are subject to error or omission and to change without notice, and the listing of such information and specifications does not ensure product availability.

Belden provides the information and specifications herein on an "AS IS" basis, with no representations or warranties, whether express, statutory or implied. In no event will Belden be liable for any damages (including consequential, indirect, incidental, special, punitive, or exemplary damages) whatsoever, even if Belden has been advised of the possibility of such damages, whether in an action under contract, negligence or any other theory, arising out of or in connection with the use, or inability to use, the information or specifications described herein.

All sales of Belden products are subject to Belden's standard terms and conditions of sale.

Belden believes this product to be in compliance with the following environmental regulations: California Proposition 65 Consent Judgment For Wire & Cable Mfgs.(San Francisco Superior Court Nos. 312962 And 320342); EU RoHS (Directive 2002/95/EC, 27-Jan2003); Material manufactured prior to the compliance date may still be in stock at Belden facilities and in our Distributor's inventory. EU ELV (Directive 2000/53/EC, 18-Sept-2000); EU WEEE (Directive 2002/96/EC, 27-Jan-2003); And EU BFR (Directive 2003/11/EC, 6-Feb2003). The information provided in this Product Disclosure, and the identification of materials listed as reportable or restricted within the Product Disclosure, is correct to the best of Belden's knowledge, information and belief at the date of its publication. The information provided in the Product Disclosure is designed only as a general guide for the safe handling, storage, and any other operation of the product itself or the one that it becomes a part of. This Product Disclosure is not to be considered a warranty or quality specification. Regulatory information is for guidance purposes only. Product users are responsible for determining the applicability of legislation and regulations based on their individual usage of the product.

Belden declares this product to be in compliance with EU LVD (Low Voltage Directive 73/23/EEC), as amended by directive 93/68/EEC.