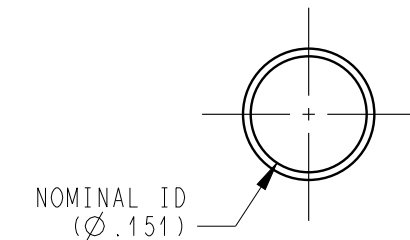
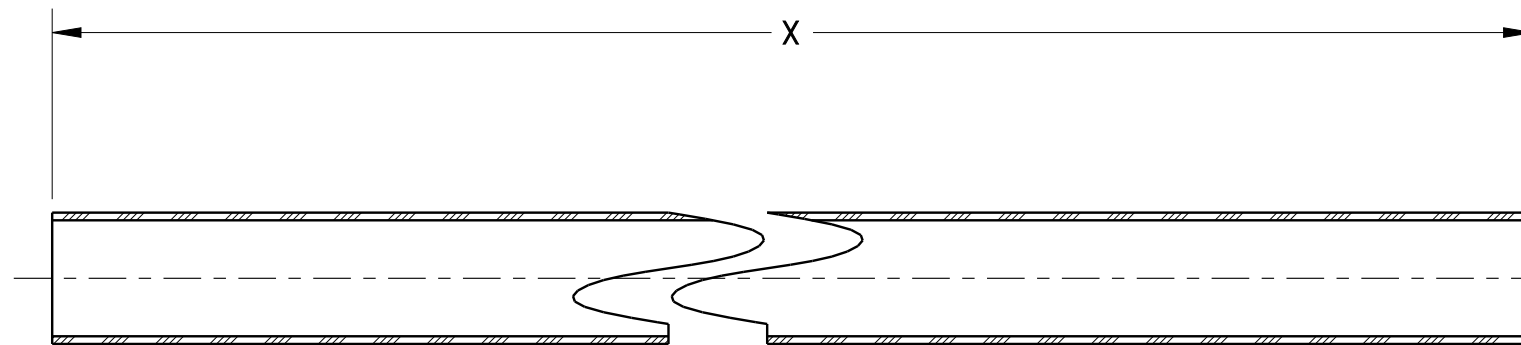


REVISIONS			
REV	DESCRIPTION	DATE	APPROVED
M	SUPERSEDES REV L; NEMA SIZE 7 AWG WAS NEMA SIZE 8;	11SEP17	B. CRANE
	J.BISSELL 11SEP17 4		
	P.A.D. U FINAL U NEXT HLA U PART NUMBER U		

DASH NO.	X
-1	5.75 - 6.25
-2	36.75 - 37.25
-3	17.5 - 18.0
-4	27.75 - 28.25
-5	12.75 - 13.25
-6	36.25 - 36.75
-7	31.75 - 32.25
-8	20.25 - 20.75
-9	27.1 - 27.6
-10	11.25 - 11.75



DESCRIPTION:

ATKINS & PEARCE
SILVERFLEX T&D C-3
NEMA SIZE 7 AWG

COLOR:
BLACK

**CONTROLLED PROCESSING PER PWI 04.01.03
NO MODIFICATIONS PERMITTED WITHOUT
AUTHORIZATION BY THE QUALITY ENGINEER.**
Q.E. K. ARCORACI 11SEP17

NOTICE
THIS DRAWING EMBODIES A CONFIDENTIAL PROPRIETARY DESIGN ORIGINATED BY G.W. LISK COMPANY, INC. AND ALL DESIGN, MANUFACTURING, REPRODUCTION, USE, AND SALE RIGHTS REGARDING THE SAME ARE EXPRESSLY RESERVED. IT IS SUBMITTED UNDER A CONFIDENTIAL RELATIONSHIP FOR A SPECIFIC PURPOSE, AND THE RECIPIENT AGREES BY ACCEPTING THIS DRAWING NOT TO SUPPLY OR DISCLOSE ANY INFORMATION REGARDING IT TO ANY UNAUTHORIZED PERSON, OR TO INCORPORATE IN OTHER PROJECTS ANY SPECIAL FEATURES PECULIAR TO THIS DESIGN. ALL PATENT RIGHTS HERETO ARE EXPRESSLY RESERVED BY G.W. LISK COMPANY, INC., CLIFTON SPRINGS, NEW YORK.

UNLESS OTHERWISE SPECIFIED	
93 Rg FINISH ALL OVER	DIMENSIONS ARE IN INCHES
f - SMOOTH FINISH FOR APPEARANCE ONLY	
RUNOUT BETWEEN COAXIAL DIAMETERS NOT TO EXCEED .005 FULL INDICATOR MOVEMENT	INTERPRET DIM AND TOL PER ASME Y14.5-2009
BREAK ALL SHARP EDGES .010 MAX ALL MACHINED INSIDE CORNERS R .010 MAX	THIRD ANGLE PROJECTION
\ddagger - RADIUS OR CHAMFER ACCEPTABLE	

ITEM	PART NUMBER	DESCRIPTION	QTY
DRAWN	B. CRANE 31JAN06	G. W. LISK CO., INC. CLIFTON SPRINGS, NEW YORK	
CHECK	J. TYLER 06FEB06		
ENGINEER	J. TYLER 06FEB06		
NEXT ASSY	VW3-0999/VARIOUS	LEADWIRE JACKET	
JOB NO	M3-4005/VARIOUS		
SIZE	CAGE CODE	DWG NO.	REV
B	81983	VY3-1869	M
DO NOT SCALE	4.000	WEIGHT	SHEET 1 OF 1