

“Stay Connected” with



Liquid Tight Cordgrips

a PennEngineering® Company



Heyco®-Tite EMC Brass Liquid Tight Cordgrips

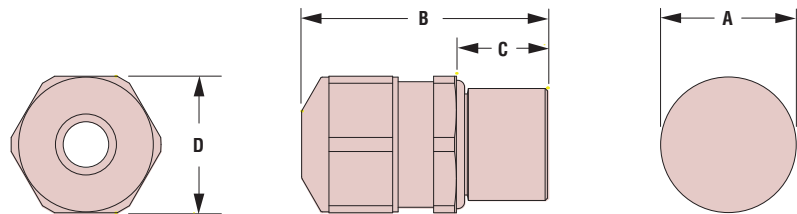
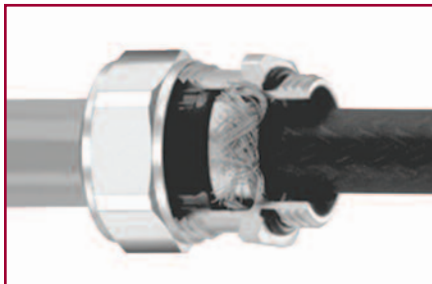
Straight Thru, PG Hubs

EMC Nickel-Plated Brass with Contact Sleeve

The Ultimate in Liquid Tight Strain Relief Protection

- Ideal for applications where Electromagnetic Interference (EMI) protection or Electromagnetic Compatibility (EMC) is needed.
- IP 68 rated.
- Nickel-plated finish over brass provides excellent corrosion resistance and durability.
- Excellent 360° shield contact with contact sleeve due to braided shield which runs into the gland.
- Combination of the sealing insert and the contact socket guarantees a constant contact quality with minimal transfer impedance.
- Inner cable protection.
- Long thread for use in standard or thick panels.
- Multiple sizes for flexible cord diameters ranging from .177" (4,5 mm) to 1.003" (25,5 mm).
- For use in clearance or threaded holes.
- Cordgrips are made of nickel plated brass and the gland is made of TPE.
- EMC locknuts available. See page 3-41.
- DFARS Compliant

CABLE DIA. RANGE				PART NO.	THREAD SIZE	UL or IEC	PART DIMENSIONS							
Minimum		Maximum					A Clearance Hole Dia.		B Max. O.A. Length		C Thread Length		D Wrenching Nut Flat Size	
in.	mm.	in.	mm.			in.	mm.	in.	mm.	in.	mm.	in.	mm.	
Standard Thread														
.177	4,5	.236	6,0	4600	PG7	cRU _{US}	.492	12,5	1.06	27,0	.39	10,0	.59	15,0
.236	6,0	.295	7,5	4641										
.236	6,0	.315	8,0	4644	PG9	cRU _{US}	.598	15,2	1.18	30,0	.39	10,0	.71	18,0
.315	8,0	.394	10,0	4645	PG9	cRU _{US}	.598	15,2	1.26	32,0				
.217	5,5	.335	8,5	4647	PG11	cRU _{US}	.732	18,6	1.22	31,0	.39	10,0	.83	21,0
.335	8,5	.472	12,0	4648										
.315	8,0	.433	11,0	4650	PG13.5	cRU _{US}	.803	20,4	1.22	31,0	.39	10,0	.94	24,0
.433	11,0	.551	14,0	4651	PG13.5	cRU _{US}	.803	20,4	1.30	33,0				
.315	8,0	.433	11,0	4653	PG16	cRU _{US}	.886	22,5	1.22	31,0	.39	10,0	.94	24,0
.433	11,0	.551	14,0	4654	PG16	cRU _{US}	.886	22,5	1.30	33,0				
.512	13,0	.630	16,0	4656	PG21	cRU _{US}	1.114	28,3	1.45	37,0	.47	12,0	1.18	30,0
.630	16,0	.748	19,0	4657	PG21	cRU _{US}	1.114	28,3	1.57	40,0				
.748	19,0	.906	23,0	4659	PG29	cRU _{US}	1.469	37,3	1.61	41,0	.47	12,0	1.50	38,0
.906	23,0	1.003	25,5	4660										
Short Thread														
ALL NEW PRODUCTS														
.177	4,5	.236	6,0	14640	PG 7	cRU _{US}	.492	12,5	.91	23,0	.24	6,0	.59	15,0
.236	6,0	.295	7,5	14641										
.236	6,0	.315	8,0	14644	PG 9	cRU _{US}	.598	15,2	1.02	26,0	.24	6,0	.71	18,0
.315	8,0	.394	10,0	14645	PG 9	cRU _{US}	.598	15,2	1.10	28,0				
.217	5,5	.335	8,5	14647	PG 11	cRU _{US}	.732	18,6	1.06	27,0	.24	6,0	.83	21,0
.335	8,5	.472	12,0	14648										
.315	8,0	.433	11,0	14650	PG 13.5	cRU _{US}	.803	20,4	1.06	27,0	.24	6,0	.94	24,0
.433	11,0	.551	14,0	14651	PG 13.5	cRU _{US}	.803	20,4	1.14	29,0				
.315	8,0	.433	11,0	14653	PG 16	cRU _{US}	.886	22,5	1.06	27,0	.24	6,0	.94	24,0
.433	11,0	.551	14,0	14654	PG 16	cRU _{US}	.886	22,5	1.14	29,0				
.512	13,0	.630	16,0	14656	PG 21	cRU _{US}	1.114	28,3	1.28	32,5	.30	7,5	1.18	30,0
.630	16,0	.748	19,0	14657	PG 21	cRU _{US}	1.114	28,3	1.40	35,5				
.748	19,0	.906	23,0	14659	PG 29	cRU _{US}	1.469	37,3	1.47	37,0	.31	8,0	1.50	38,0
.906	23,0	1.003	25,5	14660										



Quick Specs

Material	Nickel-Plated Brass W/TPE Sealing Gland
Certifications	cRU _{US} Recognized under the Component Program of Underwriters' Laboratories File E51579 to both Canadian and U.S. requirements
Temperature Range	-40°F (-40°C) to 212°F (100°C)
IP Rating	IP 68, IP 69K