

“Stay Connected” with



Liquid Tight Cordgrips

a PennEngineering® Company

Heyco® -Tite EMC Brass Liquid Tight Cordgrips

Straight-Thru, Metric Hubs

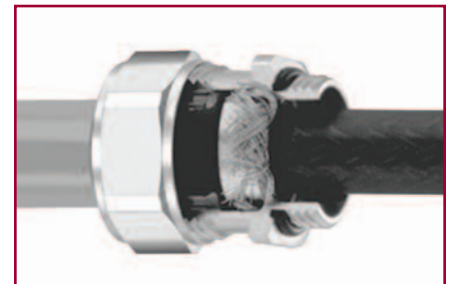
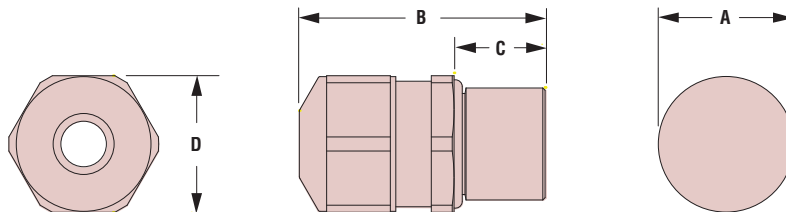
EMC Nickel-Plated Brass with Contact Sleeve

The Ultimate in Liquid Tight Strain Relief Protection



CABLE DIA. RANGE				PART NO.	THREAD SIZE	UL or IEC	PART DIMENSIONS								
Minimum		Maximum					A Clearance Hole Dia.		B Max. O.A. Length		C Thread Length		D Wrenching Nut Flat Size		
in.	mm.	in.	mm.				in.	mm.	in.	mm.	in.	mm.	in.	mm.	
Standard Thread															
.098	2,5	.138	3,5	4613	M8 x 1,25		.315	8,0	.94	24,0	.39	10,0	.43	11,0	
.118	3,0	.157	4,0	4614											
.118	3,0	.157	4,0	4615	M10 x 1,5		.394	10,0	.98	25,0	.39	10,0	.51	13,0	
.157	4,0	.236	6,0	4616											
.177	4,5	.236	6,0	4618	M12 x 1,5		.472	12,0	1.06	27,0	.39	10,0	.59	15,0	
.236	6,0	.295	7,5	4619											
.236	6,0	.312	8,0	4622	M16 x 1,5		.630	16,0	1.18	30,0	.39	10,0	.71	18,0	
.315	8,0	.394	10,0	4623	M16 x 1,5		.630	16,0	1.26	32,0	.39	10,0	.71	18,0	
.315	8,0	.433	11,0	4625	M20 x 1,5		.787	20,0	1.22	31,0	.39	10,0	.94	24,0	
.433	11,0	.551	14,0	4626	M20 x 1,5		.787	20,0	1.30	33,0	.39	10,0	.94	24,0	
.512	13,0	.630	16,0	4628	M25 x 1,5		.984	25,0	1.41	36,0	.43	11,0	1.18	30,0	
.630	16,0	.748	19,0	4629	M25 x 1,5		.984	25,0	1.53	39,0	.43	11,0	1.18	30,0	
.709	18,0	.827	21,0	4631	M32 x 1,5		1.260	32,0	1.65	42,0	.51	13,0	1.42	36,0	
.827	21,0	.984	25,0	4632											
Short Thread												ALL NEW PRODUCTS			
.098	2,5	.138	3,5	14613	M8 x 1,25		.315	8,0	.75	19,0	.20	5,0	.43	11,0	
.118	3,0	.157	4,0	14614											
.118	3,0	.157	4,0	14615	M10 x 1,5		.394	10,0	.79	20,0	.20	5,0	.51	13,0	
.157	4,0	.236	6,0	14616											
.177	4,5	.236	6,0	14618	M12 x 1,5		.472	12,0	.87	22,0	.20	5,0	.59	15,0	
.236	6,0	.295	7,5	14619											
.236	6,0	.312	8,0	14622	M16 x 1,5		.630	16,0	.98	25,0	.20	5,0	.71	18,0	
.315	8,0	.394	10,0	14623	M16 x 1,5		.630	16,0	1.06	27,0	.20	5,0	.71	18,0	
.315	8,0	.433	11,0	14625	M20 x 1,5		.787	20,0	1.06	27,0	.24	6,0	.94	24,0	
.433	11,0	.551	14,0	14626	M20 x 1,5		.787	20,0	1.10	29,0	.24	6,0	.94	24,0	
.512	13,0	.630	16,0	14628	M25 x 1,5		.984	25,0	1.26	32,0	.28	7,0	1.18	30,0	
.630	16,0	.748	19,0	14629	M25 x 1,5		.984	25,0	1.38	35,0	.28	7,0	1.18	30,0	
.709	18,0	.827	21,0	14631	M32 x 1,5		1.260	32,0	1.46	37,0	.31	8,0	1.42	36,0	
.827	21,0	.984	25,0	14632											
Short Thread, High Temperature*															
.236	6,0	.315	8,0	4609	M16 x 1,5		.630	16,0	.98	25,0	.20	5,0	.71	18,0	

*Special sealing gland rated to 200°C (392°F).



Quick Specs

Material	Nickel-Plated Brass W/TPE Sealing Gland
Certifications	Recognized under the Component Program of Underwriters' Laboratories File E51579 to both Canadian and U.S. requirements
Temperature Range	-40°F (-40°C) to 212°F (100°C)
IP Rating	IP 68, IP 69K