



## Heyco®-Tite EMC-2 Brass Liquid Tight Cordgrips

### Straight-Thru, Metric Hubs

EMC Nickel-Plated Brass with Contact Sleeve

*The Ultimate in Liquid Tight Strain Relief Protection*

- Ideal for applications where **Electromagnetic Interference (EMI) protection or Electromagnetic Compatibility (EMC) is needed.**
- **Innovative contact spring**, due to strong clamping, virtually guarantees a secure shielded tap connection.
- Contact spring can be precisely positioned due to its clearly defined limit stop, making installation simple.
- Clamping technique ensures the cable can be rotated, pushed and easily dismantled during mounting.
- Excellent 360° shield contact with contact sleeve due to braided shield which runs into the gland.
- Combination of the sealing insert and the contact socket guarantees a constant contact quality with minimal transfer impedance.
- For use in clearance or threaded holes.
- DFARS Compliant

CABLE DIA. RANGE				PART NO.	THREAD SIZE	UL or IEC	PART DIMENSIONS							
Minimum		Maximum					A Clearance Hole Dia.		B Max. O.A. Length		C Thread Length		D Wrenching Nut Flat Size	
in.	mm.	in.	mm.				in.	mm.	in.	mm.	in.	mm.	in.	mm.

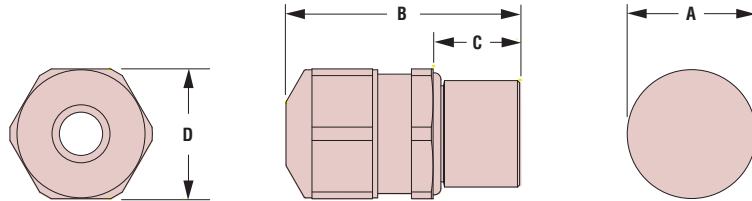
#### Standard Thread

.138	3,5	.197	5,0	<b>4594</b>	M12 x 1,5	cULus	.472	12,0	1.26	32,0	.39	10,0	.59	15,0
.197	5,0	.256	6,5	<b>4595</b>										
.236	6,0	.413	10,5	<b>4596</b>	M16 x 1,5	cULus	.643	16,0	1.38	35,0	.39	10,0	.71	18,0
.315	8,0	.591	15,0	<b>4597</b>	M20 x 1,5	cULus	.787	20,0	1.46	37,0	.39	10,0	.94	24,0
.492	12,5	.807	20,5	<b>4598</b>	M25 x 1,5	cULus	.984	25,0	1.73	44,0	.43	11,0	1.18	30,0
.669	17,0	1.004	25,4	<b>4599</b>	M32 x 1,5	cULus	1.260	32,0	1.81	46,0	.51	13,0	1.42	36,0

#### Short Thread

.138	3,5	.197	5,0	<b>14594</b>	M12 x 1,5	cULus	.472	12,0	1.06	27,0	.20	5,0	.59	15,0
.197	5,0	.256	6,5	<b>14595</b>										
.236	6,0	.413	10,5	<b>14596</b>	M16 x 1,5	cULus	.630	16,0	1.18	30,0	.20	5,0	.71	18,0
.315	8,0	.591	15,0	<b>14597</b>	M20 x 1,5	cULus	.787	20,0	1.30	33,0	.24	6,0	.94	24,0
.492	12,5	.807	20,5	<b>14598</b>	M25 x 1,5	cULus	.984	25,0	1.57	40,0	.28	7,0	1.18	30,0
.669	17,0	1.004	25,5	<b>14599</b>	M32 x 1,5	cULus	1.260	32,0	1.61	41,0	.31	8,0	1.42	36,0

ALL NEW PRODUCTS



## Heyco®-Tite EMC Brass Locknuts

EMC Nickel-Plated Brass

- Ideal for use with painted surfaces to ensure **EMC/EMI integrity.**
- Cutting teeth on locknuts provide optimal shield contact with painted surfaces.
- Nickel-plated finish over brass provides excellent corrosion resistance and durability.
- DFARS Compliant

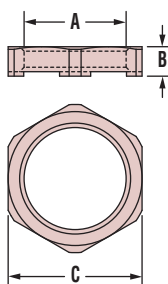
THREAD SIZE A	PART NO.	DESCRIPTION	PART DIMENSIONS			
			B Thickness		C Wrenching Flat Size	
			in.	mm.	in.	mm.

#### PG Thread

PG 7	<b>4671</b>	EMC LN PG 7	.13	3,3	.59	15,0
PG 9	<b>4672</b>	EMC LN PG 9	.13	3,3	.71	18,0
PG 11	<b>4673</b>	EMC LN PG 11	.14	3,5	.83	21,0
PG 13.5	<b>4674</b>	EMC LN PG 13.5	.14	3,5	.94	24,0
PG 16	<b>4675</b>	EMC LN PG 16	.14	3,5	1.02	26,0
PG 21	<b>4676</b>	EMC LN PG 21	.16	4,0	1.26	32,0
PG 29	<b>4677</b>	EMC LN PG 29	.18	4,6	1.61	41,0

#### Metric Thread

M8 x 1,25	<b>4681</b>	EMC LN M8	.13	3,3	.43	11,0
M10 x 1,5	<b>4682</b>	EMC LN M10	.13	3,3	.51	13,0
M12 x 1,5	<b>4683</b>	EMC LN M12	.14	3,5	.59	15,0
M16 x 1,5	<b>4684</b>	EMC LN M16	.14	3,5	.75	19,0
M20 x 1,5	<b>4685</b>	EMC LN M20	.16	4,0	.94	24,0
M25 x 1,5	<b>4686</b>	EMC LN M25	.16	4,0	1.18	30,0
M32 x 1,5	<b>4687</b>	EMC LN M32	.20	5,0	1.42	36,0



Material	Nickel-Plated Brass W/TPE Sealing Gland
Certifications	cULus Recognized under the Component Program of Underwriters' Laboratories File E51579 to both Canadian and U.S. requirements
Temperature Range	-40°F (-40°C) to 212°F (100°C)
IP Rating	IP 68, IP 69K