

& Nickel Plated Brass - Hex - PG/Metric Threads

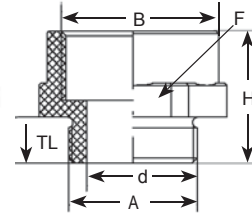


Adapters, Reducers & Enlargers

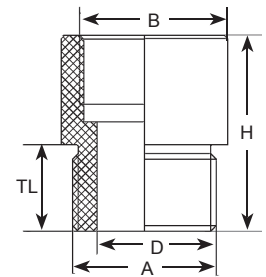
Black Nylon/Polypropylene - Thread Enlargers: Metric to Metric Threads							
Part Numbers	Threads		Adapter Type	Dimensions in Inches (mm)			
	Male Thread A	Female Thread B		TL	H	d	F
				Thread Length	Height	Inner Diameter	Wrench Flat
EM-1216-BK	M12 x 1.5	M16 x 1.5	A	.31 (8)	.47 (12)	.26 (6.5)	.83 (21)
EM-1620-BK	M16 x 1.5	M20 x 1.5	A	.31 (8)	.51 (13)	.35 (9)	.98 (25)
EM-2025-BK	M20 x 1.5	M25 x 1.5	A	.31 (8)	.59 (15)	.55 (14)	1.18 (30)
EM-2532-BK	M25 x 1.5	M32 x 1.5	C*	.59 (15)	.59 (15)	.65 (16.5)	N/A
EM-3240-BK	M32 x 1.5	M40 x 1.5	C*	.59 (15)	.77 (19.5)	.91 (23)	N/A
EM-4050-BK	M40 x 1.5	M50 x 1.5	C*	.59 (15)	.77 (19.5)	1.18 (30)	N/A
EM-5063-BK	M50 x 1.5	M63 x 1.5	C*	.59 (15)	.79 (20)	1.54 (39)	N/A

RoHS

Black Nylon Operating Temperature:
-4°F to 176°F (-20°C to 80°C)



Type C



*Note: Parts are made of Polypropylene.

Is your thread size off by one size?

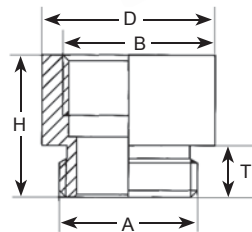
These Enlargers will solve that threading problem.

They convert holes which fit PG, NPT or Metric threads to a larger female thread of the same thread type.

Nickel Plated Brass: Metric to Metric Threads					
Part Numbers	Threads		Dimensions in Inches (mm)		
	Male Thread A	Female Thread B	D	TL	H
			Outer Diameter	Thread Length	Height
EP-0709-BR	PG 7	PG 9	.67 (17)	.20 (5)	.59 (15)
EP-0911-BR	PG 9	PG 11	.79 (20)	.24 (6)	.65 (16.5)
EP-0913-BR	PG 9	PG 13/13.5	.87 (22)	.24 (6)	.69 (17.5)
EP-1113-BR	PG 11	PG 13/13.5	.87 (22)	.24 (6)	.69 (17.5)
EP-1116-BR	PG 11	PG 16	.94 (24)	.24 (6)	.73 (18.5)
EP-1121-BR	PG 11	PG 21	1.18 (30)	.24 (6)	.81 (20.5)
EP-1316-BR	PG 13/13.5	PG 16	.94 (24)	.26 (6.5)	.75 (19)
RP-1321-BR	PG 13/13.5	PG 21	1.18 (30)	.26 (6.5)	.83 (21)
EP-1621-BR	PG 16	PG 21	1.18 (30)	.26 (6.5)	.83 (21)
EP-1629-BR	PG 16	PG 29	1.54 (39)	.26 (6.5)	.88 (22.5)
EP-2129-BR	PG 21	PG 29	1.54 (39)	.28 (7)	.91 (23)
EP-2936-BR	PG 29	PG 36	1.97 (50)	.31 (8)	1.08 (27.5)
EP-3642-BR	PG 36	PG 42	2.24 (57)	.35 (9)	1.22 (31)
EP-4248-BR	PG 42	PG 48	2.52 (64)	.39 (10)	1.30 (33)

Nickel Plated Brass: Metric to Metric Threads					
Part Numbers	Threads		Dimensions in Inches (mm)		
	Male Thread A	Female Thread B	D	TL	H
			Outer Diameter	Thread Length	Height
EM-1216-BR	M12 x 1.5	M16 x 1.5	.71 (18)	.20 (5)	.59 (15)
EM-1620-BR	M16 x 1.5	M20 x 1.5	.87 (22)	.24 (6)	.69 (17.5)
EM-2025-BR	M20 x 1.5	M25 x 1.5	1.06 (27)	.26 (6.5)	.75 (19)
RM-2532-BR	M25 x 1.5	M32 x 1.5	1.34 (34)	.26 (6.5)	.83 (21)
EM-3240-BR	M32 x 1.5	M40 x 1.5	1.65 (42)	.28 (7)	.91 (23)
EM-4050-BR	M40 x 1.5	M50 x 1.5	2.09 (53)	.35 (9)	1.22 (31)
EM-5063-BR	M50 x 1.5	M63 x 1.5	2.60 (66)	.35 (9)	1.22 (31)

Nickel Plated Brass: Metric to Metric Threads					
Part Numbers	Threads		Dimensions in Inches (mm)		
	Male Thread A	Female Thread B	D	TL	H
			Outer Diameter	Thread Length	Height
EN-3812-BR	3/8" NPT	1/2" NPT	1.10 (28)	.59 (15)	1.50 (38)
EN-1234-BR	1/2" NPT	3/4" NPT	1.10 (28)	.79 (20)	1.50 (38)
EN-1210-BR	1/2" NPT	1" NPT	1.36 (34.5)	.79 (20)	1.75 (44.5)
EN-3410-BR	3/4" NPT	1" NPT	1.38 (35)	.71 (18)	1.69 (43)
EN-1054-BR	1" NPT	1-1/4" NPT	1.73 (44)	.94 (24)	1.97 (50)



More custom parts available online at www.SealconUSA.com or upon request!

*Note: O-Ring not Included
See page 56 for thread specifications.



Optional Locking Nuts, O-Rings & Other Accessories starting on Page 29 - 40.