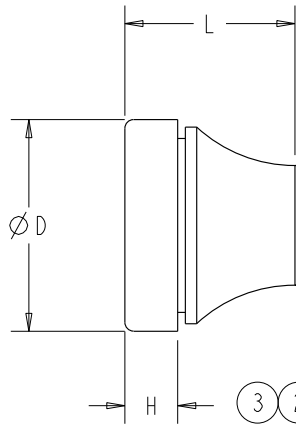


CABLE DIAMETER RANGE  
MIN. TO MAX.

(2)



(3) (2)

(2) (6)

(5)

(5)

(5) (7)

PART NO.		CABLE DIAMETER RANGE				DESCRIPTION	HOLE DIAMETER		PANEL THICKNESS RANGE				D - HEAD DIAMETER TOL. ±.024		H - BODY THICKNESS TOL. ±.020		L - OVERALL LENGTH TOL. ±.050		HOLE SIZE
GRAY	BLACK	MIN.		MAX.			in	(mm)	in	(mm)	in	(mm)	in	(mm)	in	(mm)	in	(mm)	
4014	4014B	.12	3,0	.20	5,0	LTB 30-50/PG7	.52	13,2	.04	1,0	.16	4,0	.77	19,5	.28	7,0	.53	13,5	PG7
4015	4015B	.20	5,0	.28	7,0	LTB 50-70/PG9	.63	16,0	.04	1,0	.16	4,0	.81	20,5	.28	7,0	.77	19,5	PG9
4016	4016B	.28	7,0	.39	10,0	LTB 70-100/PG11	.75	19,0	.04	1,0	.16	4,0	.98	25,0	.28	7,0	.83	21,0	PG11
4017	4017B	.39	10,0	.55	14,0	LTB 80-140/PG16	.91	23,0	.04	1,0	.16	4,0	1.10	28,0	.26	6,5	.89	22,5	PG16
4018	4018B	.55	14,0	.79	20,0	LTB 140-200/PG21	1.14	29,0	.04	1,0	.16	4,0	1.37	34,7	.30	7,5	1.04	26,5	PG21
4019	4019B	.79	20,0	1.02	26,0	LTB 200-260/PG29	1.50	38,0	.04	1,0	.16	4,0	1.80	45,7	.28	7,0	1.10	28,0	PG29
4020	4020B	1.02	26,0	1,38	35,0	LTB 260-350/PG36	1.89	48,0	.04	1,0	.16	4,0	2.26	57,5	.30	7,7	1.44	36,5	PG36

(2) NOTE:  
DIMENSIONS IN PARENTHESIS ARE APPROXIMATE  
METRIC CONVERSIONS ROUNDED OFF TO ONE PLACE  
AND THE GENERAL TOLERANCES DO NOT APPLY.

TOLERANCE UNLESS OTHERWISE SPECIFIED: .XX± .015 .XXX± .005 ANGULAR± 1°

(2) (4)

MATERIAL: EPDM RUBBER

COLOR: GRAY  
BLACK

(1) (6)



HEYCO PRODUCTS, INC. claims proprietary rights to the material disclosed hereon. This drawing and/or technical information is the property of HEYCO PRODUCTS, INC. is issued in confidence for use only as authorized, and may not be reproduced or described or shown to others without written permission from HEYCO PRODUCTS, INC.

DESCRIPTION:

(5) CUSTOMER DRAWING FOR  
SNAP-IN LIQUID  
TIGHT BUSHINGS

(2)  
4014-4020

PART No.

REV.: 7