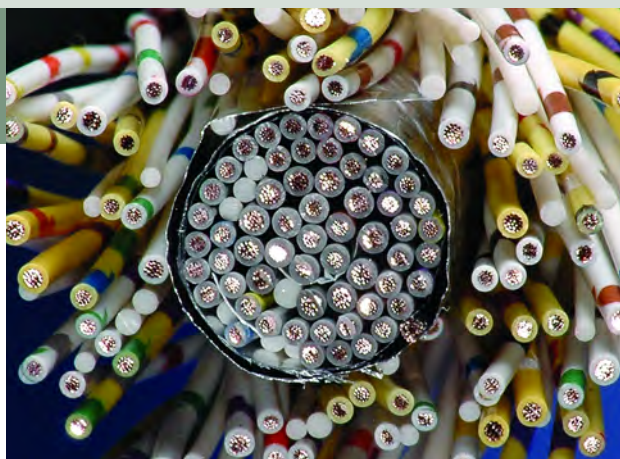


# Industrial Control Cable

52



UL /CSA Listing: (UL) 2464 80°C 300V  
(CSA) AWM 1/11 A/B FT1

Amazingly flexible.  
Durable construction.  
RoHS compliant.

**APPLICATIONS** VW-1 Internal wiring or external interconnection of electronic equipment. Industrial control cabling environment.

Eco-Index: RoHS Values

<90ppm	<5ppm	<5ppm	<5ppm	<1000ppm
Pb	Cd	Cr+6	Hg	PBDE's PPB's



**PHYSICAL CONSTRUCTION DESCRIPTION** Consists of high strand 22 or 20 AWG tinned copper extruded in semi-rigid PVC. Multiple components are bundled together and shielded in part or whole. All bundles are then cabled together and jacketed in a flexible black PVC jacket.

Series No.	Conductor	Insulation	Nom. Primary OD		Conductor ΩMft. @ 20°C	Shield	Jacket
			Inches	mm			
48993	22 (19/34)TC	SR-PVC	0.049	1.24	15.5	Individual bundles Al/PET	Flex PVC
49007	20 (19/32)TC	SR-PVC	0.058	1.47	9.75	Internal core bundle Al/PET	Flex PVC
	22(19/34)TC		0.050	1.27	15.5		

Part No.	No. of Conductors	No. of Bundles	Jacket OD (Nom.)		Put-up
			Inches	mm	
48993-110-000-5-01000	110	4	0.820	20.83	Bulk
49007-160-000-5-01000	160	11	1.7189	43.66	Bulk

All data is for reference only and is subject to change.