

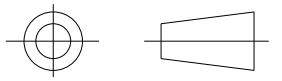
Heatshrinkable moulded shapes Low Profile Transition Boots - HellermannTyton

DRAWING No.  
**152075**

SHT. 1  
OF  
1 SHTS.

© THE COPYRIGHT OF THIS DRAWING IS RESERVED BY HELLERMANN TYTON. IT IS ISSUED ON CONDITION THAT IT IS NOT COPIED, REPRODUCED OR DISCLOSED TO A THIRD PARTY EITHER WHOLLY OR IN PART WITHOUT THE CONSENT IN WRITING OF HELLERMANN TYTON.

THIRD ANGLE PROJECTION

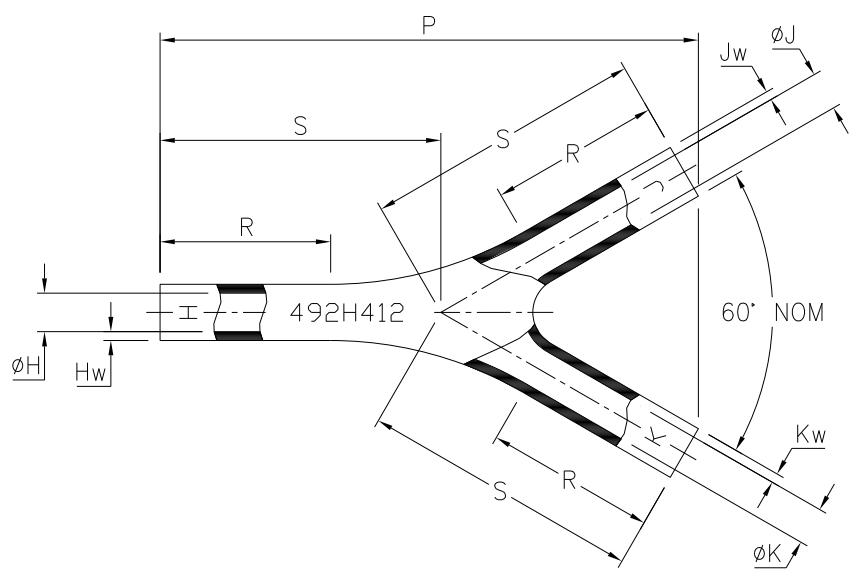


BS 8888

DO NOT SCALE  
IF IN DOUBT ASK

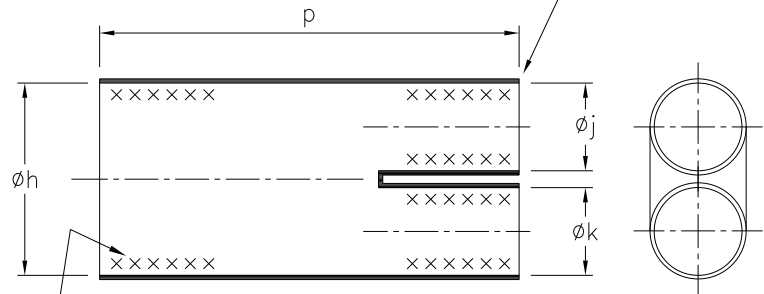
Q.A.	H/S SETT
H/S Q.A.	REL. INSP.
H/S PROD	EXT.ISS.CODE 7

STANDARD PART (AFTER UNRESTRICTED RECOVERY)



EXPANDED (AS SUPPLIED)

THE LENGTH OF EACH LEG MUST BE WITHIN 3.8 (.15) OF EACH OTHER



ADHESIVE COATING, EACH END, WHEN SPECIFIED

PART NO.	EXPANDED DIMENSIONS (AS SUPPLIED)			RECOVERED DIAMETERS		RECOVERED DIMENSIONS			
	$\phi h$	$\phi j, k$	p	$\phi H$	$\phi J, K$	P	R	S	Hw, Jw, Kw
	MIN	MIN	TOL	MAX	MAX	NOM	$\pm 15\%$	NOM	NOM
492H412-*	19.8 (0.78)	13.2 (.52)	54.4 $\pm 6.4$ (2.14 $\pm 2.5$ )	6.6 (.26)	6.6 (.26)	78.2 (3.08)	25.4 (1.00)	40.6 (1.60)	1.0 (.04)
492H412-*--22	19 (.75)	11.4 (.45)	54.4 $\pm 6.4$ (2.14 $\pm 2.5$ )	6.6 (.26)	6.6 (.26)	78.2 (3.08)	25.4 (1.00)	40.6 (1.60)	1.0 (.04)

FOR MOULDING PURPOSES ONLY

MOULD SHAPE	$\phi H$	$\phi J, K$	P	R	S	Hw, Jw, Kw
	MAX	MAX	NOM	$\pm 3.8$ ( $\pm 1.5$ )	$\pm 6.4$ ( $\pm 2.5$ )	$\pm 20\%$
492H412-*	6.1 (.24)	6.1 (.24)	78.2 (3.08)	25.4 (1.00)	40.6 (1.60)	1.3 (.05)
492H412-*--22	6.1 (.24)	6.1 (.24)	78.2 (3.08)	25.4 (1.00)	40.6 (1.60)	1.3 (.05)

\* ALL MATERIAL CODES

Heatshrinkable moulded shapes Low Profile Transition Boots - HellermannTyton

For information only, not subject to technical changes.

3	P1329	G.B.	11/10/10
2	P1293	L.F.	16/09/09
1	P1193	S.Almond	03/04/08
ISSUE	NOTE No.	DRAWN	DATE

**HellermannTyton**

Pennycross Close, Plymouth, Devon, England  
Tel ++44 (0) 1752 701201 Fax ++44 (0) 1752 790058

NAME	S.Almond	SCALE	NTS	ADHESIVE	A3 ORIGINAL SHEET SIZE 420mm x 297mm	SHT. 1 OF 1 SHTS.
DATE	03/04/08	DIMS IN	mm (in)			
TITLE	TRANSITION 2 TO 1		PART No.	492H412	DRAWING No.	152075