

1) CONSTRUCTION:		NOM. DIA.
CONDUCTOR:	24 AWG 7/32 STRANDED TINNED COPPER	.024"
INSULATION:	HIGH DENSITY POLYETHYLENE, .0075" NOM. WALL THICKNESS	.039"
PAIRS:	COLOR CODED SINGLES TWISTED INTO PAIRS	.078"
CABLE:	(2) TWISTED PAIRS TWISTED TOGETHER TO FORM A CABLE CORE	.114"
JACKET:	POLYVINYLCHLORIDE, (COLOR, PER CHART 1), .023" NOM. WALL THICKNESS (NOM. O.D. ACROSS WIDEST CROSS SECTION)	.200"

2) PHYSICAL PROPERTIES:
 TEMPERATURE RATING, MAX. 75°C
 TEMPERATURE RATING, MIN. -20°C
 WT./M', NOM., NET. 13.6 LBS.
 CHART 1:

QUABBIN P/N	JACKET COLOR
5200	BLACK
5202	RED
5203	ORANGE
5204	YELLOW
5205	GREEN
5206	BLUE
5207	VIOLET
5208	GRAY
5209	WHITE
5210	BEIGE
5212	PINK

3) ELECTRICAL CHARACTERISTICS:
 SEE PAGE 2

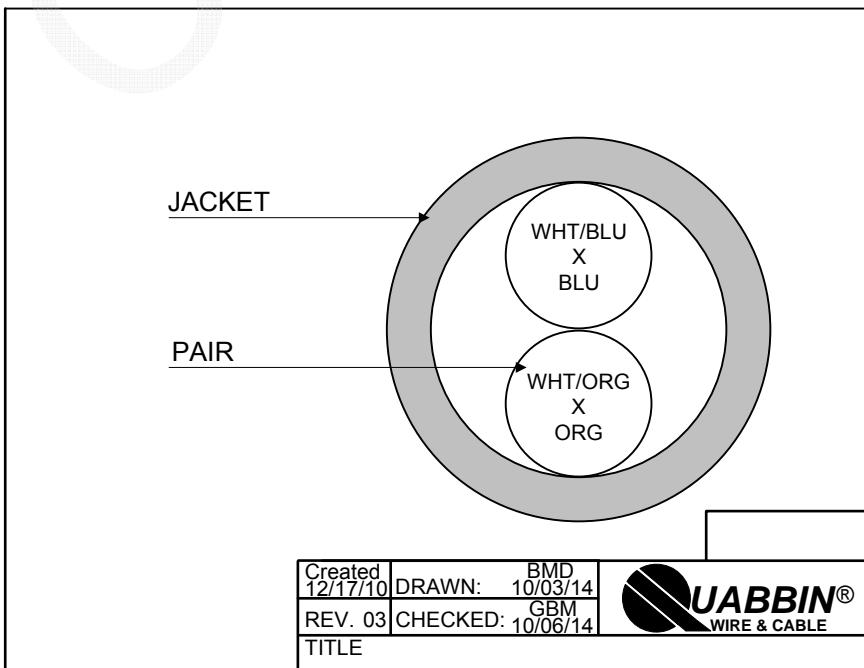
4) AGENCY APPROVALS:
 NEC (UL) TYPE CM/CMG
 CEC C(UL) TYPE CM/CMG
 ETL VERIFIED TIA-568-C.2

5) APPLICATION:
 JUMPER AND PATCH CABLE FOR CATEGORY 5e APPLICATIONS. RoHS COMPLIANT MATERIALS.

6) PRINT: (WHITE INK ON BLACK JACKET, ALL OTHERS BLACK INK)
 QUABBIN DATAMAX PATCH CORD/JUMPER P/N (**PER CHART 1***) -- TYPE CM C(UL)US CMG 24 AWG 75C -- ETL VERIF. TIA-568-C.2 CAT 5e -- RoHS -- (**LOT DESIGNATOR**) (**SEQUENTIAL FOOTAGE**)

7) COLOR CODE:
 1. WHITE/BLUE X BLUE
 2. WHITE/ORANGE X ORANGE

8) PACKAGING:
 TO BE PACKAGED AS PER QWC'S
 STANDARD PACKAGING



Created 12/17/10	DRAWN: BMD 10/03/14	
REV. 03	CHECKED: GBM 10/06/14	
TITLE PATCH CABLE FOR CAT 5e		
QUABBIN P/N	QWC0007	1 of 2


CUSTOMER APPROVAL: _____ DATE: _____

3) ELECTRICAL CHARACTERISTICS: (FOR 100m OF CABLE)

CAPACITANCE, MUTUAL, NOM.	13.5 PF/FT. AT 1 MHz
DIELECTRIC WITHSTANDING, MIN.	1500V RMS
VOLTAGE RATING, MAX.	300V
D.C. RESISTANCE, MAX.	26.0 Ω /1000'
IMPEDANCE	100 +/- 15 Ω 1-350 MHz
IMPEDANCE, SMOOTHED	100 +/- 10 Ω TYPICAL 5 - 100 MHz

RETURN LOSS	$1 \leq f < 10$ MHz 20 + 5 LOG(f) dB MIN $10 \leq f < 20$ MHz 25 dB MIN $20 \leq f \leq 100$ MHz 25- 8.6 LOG($f/20$) dB MIN
NEXT	$1 \leq f \leq 100$ MHz 35.3 - 15 LOG($f/100$) dB MIN
ACRF	$1 \leq f \leq 100$ MHz 23.8 - 20 LOG($f/100$) dB MIN
INSERTION LOSS	$1 \leq f \leq 100$ MHz 1.2[1.967 \sqrt{f} + 0.023(f) + 0.050/ \sqrt{f}] dB MAX
DELAY	$1 \leq f \leq 100$ MHz 534 + 36/ \sqrt{f} ns MAX
DELAY SKEW	$1 \leq f \leq 100$ MHz <25ns
LCL	$1 \leq f \leq 100$ MHz -38dB MIN

NOTE: ALL TESTING IS CONDUCTED OFF THE REEL.

Created 12/17/10	DRAWN: BMD 10/03/14	
REV. 03	CHECKED: GBM 10/06/14	
TITLE PATCH CABLE FOR CAT 5e		
QUABBIN P/N		QWC0007
		2 of 2

CUSTOMER APPROVAL:

DATE: