

1) CONSTRUCTION:		NOM. DIA.
CONDUCTOR:	24 AWG 7/32 STRANDED TINNED COPPER	.024"
INSULATION:	HIGH DENSITY POLYETHYLENE, .0075" NOM. WALL THICKNESS	.039"
PAIRS:	COLOR CODED SINGLES TWISTED INTO PAIRS	.078"
CABLE:	(2) TWISTED PAIRS TWISTED TOGETHER TO FORM A CABLE CORE	.114"
JACKET:	POLYVINYLCHLORIDE, ( <b>COLOR, PER CHART 1</b> ), .023" NOM. WALL THICKNESS (NOM. O.D. ACROSS WIDEST CROSS SECTION)	.200"

2) PHYSICAL PROPERTIES:

TEMPERATURE RATING, MAX.	75°C
TEMPERATURE RATING, MIN.	-20°C
WT./M', NOM., NET.	13.6 LBS.

CHART 1:

QUABBIN P/N	JACKET COLOR
5200	BLACK
5202	RED
5203	ORANGE
5204	YELLOW
5205	GREEN
5206	BLUE
5207	VIOLET
5208	GRAY
5209	WHITE
5210	BEIGE
5212	PINK

3) ELECTRICAL CHARACTERISTICS:  
SEE PAGE 2

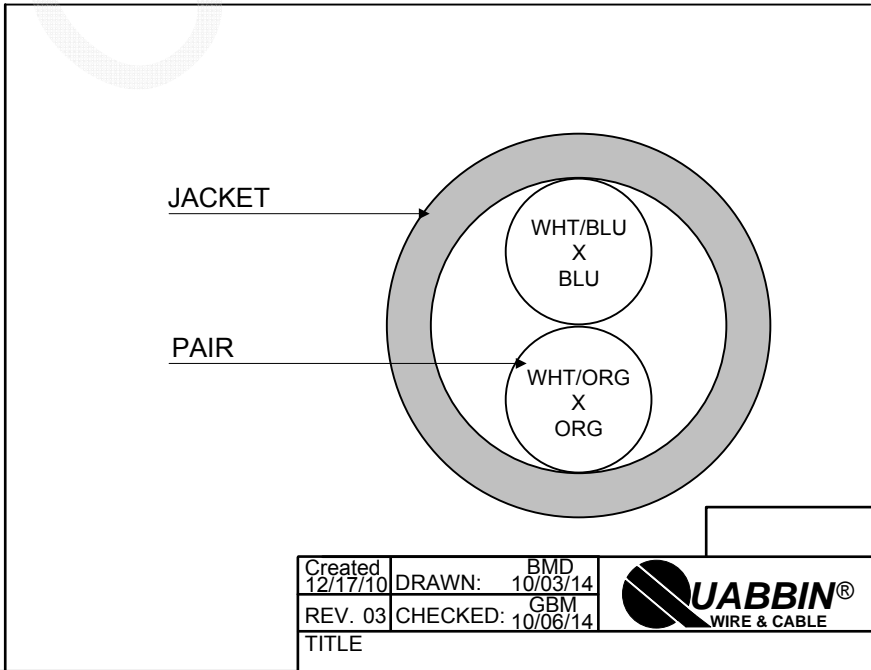
4) AGENCY APPROVALS:  
NEC (UL) TYPE CM/CMG  
CEC C(UL) TYPE CM/CMG  
ETL VERIFIED TIA-568-C.2

5) APPLICATION:  
JUMPER AND PATCH CABLE FOR CATEGORY 5e APPLICATIONS. RoHS COMPLIANT MATERIALS.

6) PRINT: (WHITE INK ON BLACK JACKET, ALL OTHERS BLACK INK)  
QUABBIN DATAMAX PATCH CORD/JUMPER P/N (**PER CHART 1\***) -- TYPE CM C(UL)US CMG 24 AWG 75C -- ETL VERIF. TIA-568-C.2 CAT 5e -- RoHS -- (**LOT DESIGNATOR**) (**SEQUENTIAL FOOTAGE**)

7) COLOR CODE:  
1. WHITE/BLUE X BLUE  
2. WHITE/ORANGE X ORANGE

8) PACKAGING:  
TO BE PACKAGED AS PER QWC'S  
STANDARD PACKAGING



CUSTOMER APPROVAL:

DATE:


Created 12/17/10	DRAWN: BMD 10/03/14	
REV. 03	CHECKED: GBM 10/06/14	
TITLE PATCH CABLE FOR CAT 5e		
QUABBIN P/N	QWC0007	1 of 2

3) ELECTRICAL CHARACTERISTICS: (FOR 100m OF CABLE)

CAPACITANCE, MUTUAL, NOM. 13.5 PF/FT. AT 1 MHz  
 DIELECTRIC WITHSTANDING, MIN. 1500V RMS  
 VOLTAGE RATING, MAX. 300V  
 D.C. RESISTANCE, MAX. 26.0 Ω/1000'  
 IMPEDANCE 100 +/- 15 Ω 1-350 MHz  
 IMPEDANCE, SMOOTHED 100 +/- 10 Ω TYPICAL 5 - 100 MHz

RETURN LOSS	1 ≤ f < 10 MHz	20 + 5 LOG(f) dB MIN
	10 ≤ f < 20 MHz	25 dB MIN
	20 ≤ f ≤ 100 MHz	25- 8.6 LOG(f/20) dB MIN
NEXT	1 ≤ f ≤ 100 MHz	35.3 - 15 LOG(f/100) dB MIN
ACRF	1 ≤ f ≤ 100 MHz	23.8 - 20 LOG(f/100) dB MIN
INSERTION LOSS	1 ≤ f ≤ 100 MHz	1.2[1.967 √f + 0.023(f) + 0.050/√f] dB MAX
DELAY	1 ≤ f ≤ 100 MHz	534 + 36/√f ns MAX
DELAY SKEW	1 ≤ f ≤ 100 MHz	<25ns
LCL	1 ≤ f ≤ 100 MHz	-38dB MIN

NOTE: ALL TESTING IS CONDUCTED OFF THE REEL.

Created 12/17/10	DRAWN: BMD 10/03/14	
REV. 03	CHECKED: GBM 10/06/14	
TITLE PATCH CABLE FOR CAT 5e		
QUABBIN P/N		QWC0007
		2 of 2

CUSTOMER APPROVAL:

DATE: