

|                  |  |           |
|------------------|--|-----------|
| 1) CONSTRUCTION: |  | NOM. DIA. |
| CONDUCTOR:       | 24 AWG 7/32 STRANDED TINNED COPPER   | .024"     |
| INSULATION:      | HIGH DENSITY POLYETHYLENE, .0075" NOM. WALL THICKNESS  | .039"     |
| PAIRS:           | COLOR CODED SINGLES TWISTED INTO PAIRS   | .078"     |
| CABLE:           | (2) TWISTED PAIRS TWISTED TOGETHER TO FORM A CABLE CORE  | .114"     |
| JACKET:          | POLYVINYLCHLORIDE, ( <b>COLOR, PER CHART 1</b> ), .023" NOM. WALL THICKNESS<br>(NOM. O.D. ACROSS WIDEST CROSS SECTION) | .200"     |

2) PHYSICAL PROPERTIES:

|                          |           |
|--------------------------|-----------|
| TEMPERATURE RATING, MAX. | 75°C      |
| TEMPERATURE RATING, MIN. | -20°C     |
| WT./M', NOM., NET.       | 13.6 LBS. |

CHART 1:

| QUABBIN P/N | JACKET COLOR |
|-------------|--------------|
| 5200        | BLACK        |
| 5202        | RED          |
| 5203        | ORANGE       |
| 5204        | YELLOW       |
| 5205        | GREEN        |
| 5206        | BLUE         |
| 5207        | VIOLET       |
| 5208        | GRAY         |
| 5209        | WHITE        |
| 5210        | BEIGE        |
| 5212        | PINK         |

3) ELECTRICAL CHARACTERISTICS:  
SEE PAGE 2

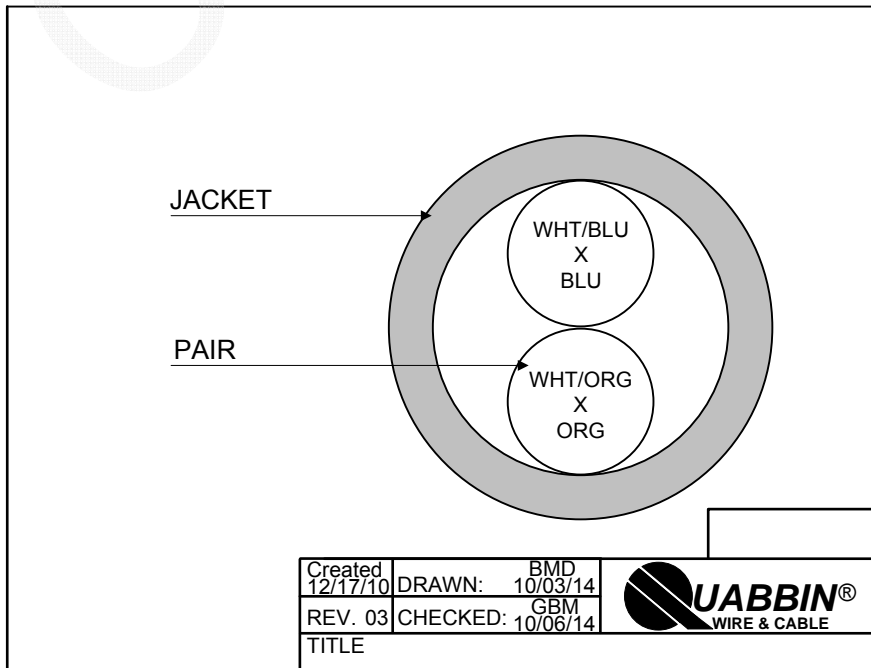
4) AGENCY APPROVALS:  
NEC (UL) TYPE CM/CMG  
CEC C(UL) TYPE CM/CMG  
ETL VERIFIED TIA-568-C.2

5) APPLICATION:  
JUMPER AND PATCH CABLE FOR CATEGORY 5e APPLICATIONS. RoHS COMPLIANT MATERIALS.

6) PRINT: (WHITE INK ON BLACK JACKET, ALL OTHERS BLACK INK)  
QUABBIN DATAMAX PATCH CORD/JUMPER P/N (**PER CHART 1\***) -- TYPE CM C(UL)US CMG 24 AWG 75C -- ETL VERIF. TIA-568-C.2 CAT 5e -- RoHS -- (**LOT DESIGNATOR**) (**SEQUENTIAL FOOTAGE**)

7) COLOR CODE:  
1. WHITE/BLUE X BLUE  
2. WHITE/ORANGE X ORANGE

8) PACKAGING:  
TO BE PACKAGED AS PER QWC'S  
STANDARD PACKAGING



|                                 |                          |        |
|---------------------------------|--------------------------|--------|
| Created<br>12/17/10             | DRAWN: BMD<br>10/03/14   |        |
| REV. 03                         | CHECKED: GBM<br>10/06/14 |        |
| TITLE<br>PATCH CABLE FOR CAT 5e |                          |        |
| QUABBIN P/N                     | QWC0007                  | 1 of 2 |

CUSTOMER APPROVAL:


DATE:

3) ELECTRICAL CHARACTERISTICS: (FOR 100m OF CABLE)

CAPACITANCE, MUTUAL, NOM. 13.5 PF/FT. AT 1 MHz  
 DIELECTRIC WITHSTANDING, MIN. 1500V RMS  
 VOLTAGE RATING, MAX. 300V  
 D.C. RESISTANCE, MAX. 26.0 Ω/1000'  
 IMPEDANCE 100 +/- 15 Ω 1-350 MHz  
 IMPEDANCE, SMOOTHED 100 +/- 10 Ω TYPICAL 5 - 100 MHz

|                |                  |  |
|----------------|------------------|--|
| RETURN LOSS    | 1 ≤ f < 10 MHz   | 20 + 5 LOG(f) dB MIN                       |
|                | 10 ≤ f < 20 MHz  | 25 dB MIN                                  |
|                | 20 ≤ f ≤ 100 MHz | 25- 8.6 LOG(f/20) dB MIN                   |
| NEXT           | 1 ≤ f ≤ 100 MHz  | 35.3 - 15 LOG(f/100) dB MIN                |
| ACRF           | 1 ≤ f ≤ 100 MHz  | 23.8 - 20 LOG(f/100) dB MIN                |
| INSERTION LOSS | 1 ≤ f ≤ 100 MHz  | 1.2[1.967 √f + 0.023(f) + 0.050/√f] dB MAX |
| DELAY          | 1 ≤ f ≤ 100 MHz  | 534 + 36/√f ns MAX                         |
| DELAY SKEW     | 1 ≤ f ≤ 100 MHz  | <25ns                                      |
| LCL            | 1 ≤ f ≤ 100 MHz  | -38dB MIN                                  |

NOTE: ALL TESTING IS CONDUCTED OFF THE REEL.

|                                 |                          |   |
|---------------------------------|--------------------------|---|
| Created<br>12/17/10             | DRAWN: BMD<br>10/03/14   |  |
| REV. 03                         | CHECKED: GBM<br>10/06/14 |   |
| TITLE<br>PATCH CABLE FOR CAT 5e |                          |   |
| QUABBIN P/N                     |                          | QWC0007   |
|                                 |                          | 2 of 2  |

CUSTOMER APPROVAL:

DATE: