



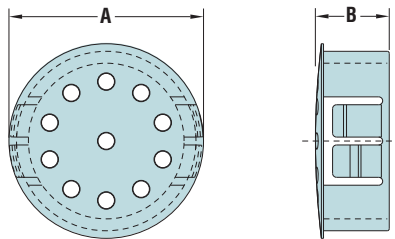
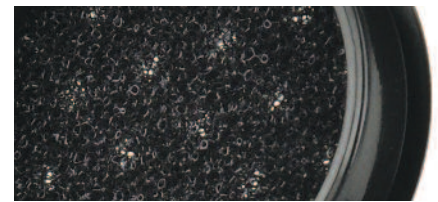
HEYClean™ Filter Insert Vent Plugs

Mounting Hole Diameter Range: .500" (12,7 mm) to 3.000" (76,2 mm)

MOUNTING HOLE DIAMETER		PART NO.	DESCRIPTION	No. of Vent Holes	PART DIMENSIONS			
in.	mm.				Black	A Head Diameter	B Overall Height	
		Multiple Locking Steps for Panel Thickness up to .125" (3,2 mm)						
.500	12,7	4917	FIVP 500	4	.56	14,2	.41	10,4
.875	22,2	4919	FIVP 875	9	1.02	25,8	.45	11,5
1.000	25,4	4921	FIVP 1000	9	1.20	30,6		
1.093 - 1.125	27,8 - 28,6	4923	FIVP 1093	9	1.22	30,9	.45	11,5
1.375	34,9	4931	FIVP 1375	11	1.50	38,1		
1.500	38,1	4933	FIVP 1500	13	1.67	42,4		
2.000	50,8	4937	FIVP 2000	19	2.14	54,4	.47	11,9
		Multiple Locking Steps for Panel Thickness up to .250" (6,4 mm)						
.875	22,2	4973	FIVPT 875	9	1.02	25,8	.56	14,3
1.000	25,4	4975	FIVPT 1000	9	1.20	30,6		
1.093 - 1.125	27,8 - 28,6	4977	FIVPT 1093	9	1.22	30,9	.56	14,3
1.375	34,9	4983	FIVPT 1375	11	1.50	38,1		
1.500	38,1	4985	FIVPT 1500	13	1.67	42,4		
2.000	50,8	4989	FIVPT 2000	19	2.14	54,4	.58	14,7
2.500	63,5	4939	FIVP 2.5	19	2.72	69,0	.75	19,1
3.000	76,2	4941	FIVP 3.0	26	3.15	80,0	.74	18,8

Standard color black. Consult Heyco for other colors.

- Filter inserts permit the passage of air for ventilation but limit liquid as well as dust and pest infiltration.
- Polyurethane foam filter will filter particle sizes 30 micron and larger.
- Filter is captive in body of vent plug and uses no additional real estate inside.



Material: Nylon 6/6
 Flammability Rating: 94V-2
 Temperature Range: -40°F (-40°C) to 221°F (105°C)

Quick Specs