

Lutze Cablefix Vario ●

Modular Strain Relief System, with plastic or aluminum frame for cable assemblies



Characteristics:

- Frame material Polished Aluminum or Polyamide 66 (GF30)

Small (VK) Insert Characteristics:

- Material TPE
- Temperature range -40°C - +135°C, -40°F - +275°F
- Resistance UV, ozone, oils and fuels, acids and dyes, solvents and salt water

Large (VG) Insert Characteristics:

- Material TPE
- Temperature range -40 - +135°C, -40°F - +275°F
- Resistance UV, ozone, oils and fuels, acids and dyes, solvents and salt water

Blanking Plug Characteristics:

- Material PA6 (GF15) Gray

Part No.	Frame Type	Dimensions WxHxD in mm	No. of Small VK Inserts	No. of Large VG Inserts
PLASTIC				
606050	KKLR1	136 x 71 x 30	4	2
606051	KKLR2	164 x 71 x 30	6	3
ALUMINUM				
606001	AKLR1	108 x 68 x 30	4	2
606002	AKLR2	148 x 68 x 30	6	3
606004	AKLR4	148 x 108 x 30	12	6
606005	AKLR5	188 x 78 x 30	8	4
606007	AKLR7	188 x 118 x 30	16	8

Part No.	Type Small VK	Clamping Range mm	No of Holes
606150	VK0	SOLID	0
606151	VK4	4 - 4.5	14
606152	VK5	4.5 - 5.5	8
606153	VK6	5.5 - 6.5	8
606154	VK7	6.5 - 7.5	5
606155	VK8	7.5 - 8.5	5
606156	VK9	8.5 - 9.5	3
606157	VK10	9.5 - 10.5	3
606158	VK12	10.5 - 12.5	2
606159	VK14	12.5 - 14.5	2
606160	VK16	14.5 - 16.5	2

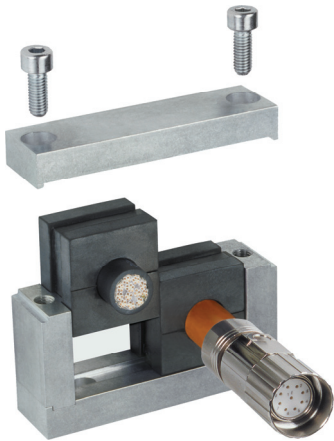
Part No.	Type Large VG	Clamping Range mm	No of Holes
606200	VG0	SOLID	0
606201	VG18	16.5 - 18.5	2
606202	VG20	18.5 - 20.5	1
606203	VG22	20.5 - 22.5	1
606204	VG24	22.5 - 24.5	1
606205	VG26	24.5 - 26.5	1
606206	VG28	26.5 - 28.5	1
606207	VG30	28.5 - 30.5	1
606208	VG32	30.5 - 32.5	1
606209	VG34	32.5 - 34.5	1

Part No.	Fits Insert Part No.	Type	Outer Dia. mm	Length mm
606250	606151	BL4	4	30
606251	606152	BL5	5	30
606252	606153	BL6	6	30
606253	606154	BL7	7	30
606254	606155	BL8	8	30
606255	606156	BL9	9	30
606256	606157	BL10	10	30
606257	606158	BL12	12	30
606258	606159	BL14	14	30
606259	606160	BL16	16	30
606260	606201	BL18	18	30

1-800-447-2371 – www.lutze.com

Lutze Cablefix Vario ●

Assembly of Modular Strain Relief System



1. Choose aluminum or plastic frame.

The Cablefix Vario features outstanding material characteristics for harsh industrial environments and a high sealing protection of IP65. Every frame ships with an included drill pattern for proper mounting to the cabinet. The plastic frames are made of reinforced polyamide 66 with brass support. The aluminum version is made entirely of solid polished aluminum. Cablefix Vario offers strain relief options for cable ranges from 4.5 to 34.5 mm in diameter. The versatile system is ideal for installations and retrofitting, and offers proper strain relief for already connectorized cables. This is a great advantage over conventional solutions with standard cable fittings.



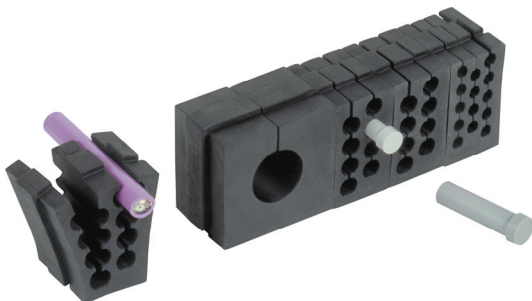
2. Choose appropriate inserts for the selected frame.

Example:

606050 can hold either

- 4 inserts type VK or
- 2 inserts type VG
- 2 VK inserts replace 1 VG insert

VK small	VK small	VG large	VG large	VG large	VK small
VK small	VK small	VG large	VG large	VG large	VK small



- The tongue and groove design makes combining different inserts quick and easy.
- The slotted design allows easy installation by sliding the assembled cables in from the side.

3. Select appropriately sized blanking plugs for unused holes.

Once all unused holes are plugged, the system provides a protection rating IP65. The rubber components do not require the use of grease, which is advantageous over other similar systems.

The advantages at a glance:

- Minimum space requirement
- Simple insertion of rubber inserts due to tongue and groove design
- Very versatile
- Allows future expansion
- Ideal for retrofitting of existing cabinets



1-800-447-2371 – www.lutze.com