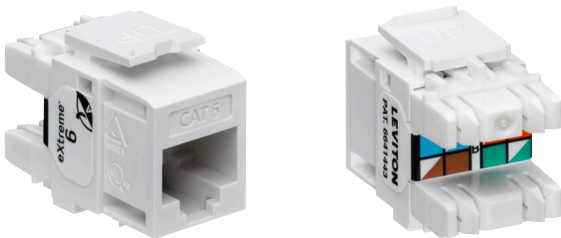


## eXtreme® Cat 6 Component-Rated UTP QuickPort® Connector

### APPLICATION

The eXtreme Cat 6 connector is designed to be used with all QuickPort compatible products. The connector includes patented Retention Force Technology which promotes consistent performance over the life of the system. It features unique pair separation towers allowing for quicker and easier terminations. The connector is built on a 180-degree configuration with the punch field in the back, allowing for rear termination.



### SPECIFICATION

The connector shall meet or exceed the requirements for channel and component-level performance described in ANSI/TIA-568-C.2 Category 6 standards. The connector shall be individual snap-in style. The connectors shall also be in compliance with all National Electrical Codes; compliant with ANSI/TIA-1096-A; UL listed; and independently verified. In addition to Category 6 compliance, the connector shall have the ability to support high megabit and shared-sheath applications. All plastics used in construction of the connector bodies shall be fire retardant with a UL flammability rating of 94V-0. Termination of all connectors shall be 110-type insulation displacement connectors (IDC). The connector shall provide a ledge directly adjacent to the 110-style termination against which the wires can be terminated and cut in one action by the installation craftsman. Connector wiring is universal and will accommodate installation color codes for T568A and T568B wiring schemes. The termination field shall be in the rear for easy access. The connector shall fit in a variety of telecommunications wallplates, outlets, and field-configurable patch panels and patch blocks.

### FEATURES

- Terminates 26-22 gauge solid conductors
- Capable of multiple re-terminations
- Gas-tight IDC connectors prevent corrosion
- Dual-layer T568B/T568A wiring label simplifies punchdown
- Patented Retention Force Technology protects tines from damage and increases system longevity
- Pair Separation Tower design facilitates separation of conductors and minimizes untwisting
- 180-degree configuration allows for rear termination
- Available in 13 ANSI/TIA-606-B compatible colors for color coding or organization
- Available individually, in bulk packages of 25, and in bulk packages of 150 with a JackRapid™ Punchdown Tool

### DESIGN CONSIDERATIONS

- Use in any QuickPort housing to support eXtreme Cat 6 UTP connectivity in surface-mount, flush-mount, or modular furniture outlets and field-configurable panels
- Can be used in conjunction with other QuickPort snap-in modules for voice/data and video applications over UTP, coax, and fiber

### STANDARDS COMPLIANCE

- ANSI/TIA-568-C.2
- ISO/IEC 11801
- ANSI/TIA-1096-A (formerly FCC Part 68)
- cULus Listed
- IEEE 802.3at (Type 1) Power over Ethernet (PoE) applications up to 15.4 watts
- IEEE 802.3at (Type 2) Power over Ethernet (PoE+) applications up to 30 watts

### PHYSICAL SPECIFICATIONS

Dimensions: See page two

Materials: **Connector Body:** High-impact, fire-retardant plastic rated UL 94V-0.

**Spring-Wire Contacts:** High-quality copper-based alloy, plated with 50 micro-inches of gold over 100 micro-inches of nickel for lowest contact resistance, maximum life.

### COUNTRY OF ORIGIN

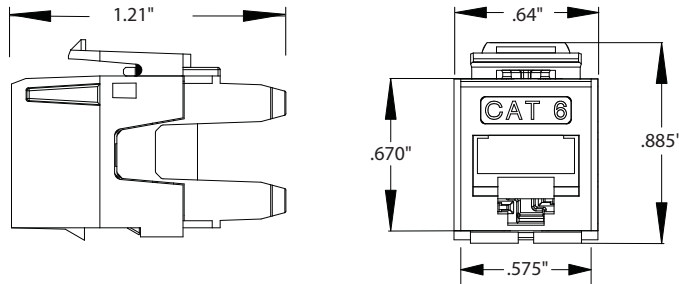
USA

### WARRANTY INFORMATION

For a copy of Leviton product warranties, visit [www.leviton.com/warranty](http://www.leviton.com/warranty).

**ELECTRONIC FILES**

For CAD files, typical specs, or technical drawings (.DXF, .DWG), visit [www.leviton.com](http://www.leviton.com).



**61110-xx6**

ANSI/TIA-568-C.2 CAT 6 PARAMETERS	Connecting Hardware Requirements	
	@ 100MHz	@ 250MHz
Insertion Loss (IL)	0.20	0.32
Near-end Crosstalk (NEXT)	54.0	46.0
Far-end Crosstalk (FEXT)	43.1	35.1
Return Loss (RL)	24.0	16.0
Transverse Conversion Loss (TCL)	28.0	20.0
Transverse Conversion Transfer Loss (TCTL)	28.0	20.0

\*All requirements are minimum allowable except IL requirements are maximum allowable. Connecting hardware shall meet requirements of all parameters from 1-250 MHz. Values in above table are only at specific frequencies and are for references only.

**PART NUMBERS**

Description	Connector	QuickPack® 25/Bag	150/Bag with JackRapid™ Tool
eXtreme® Cat 6 Component-Rated UTP QuickPort® Connector, white	61110-RW6	61110-BW6	61110-JW6
eXtreme Cat 6 Component-Rated UTP QuickPort Connector, ivory	61110-RI6	61110-BI6	61110-JI6
eXtreme Cat 6 Component-Rated UTP QuickPort Connector, orange	61110-RO6	61110-BO6	61110-JO6
eXtreme Cat 6 Component-Rated UTP QuickPort Connector, blue	61110-RL6	61110-BL6	61110-JL6
eXtreme Cat 6 Component-Rated UTP QuickPort Connector, black	61110-RE6	61110-BE6	61110-JE6
eXtreme Cat 6 Component-Rated UTP QuickPort Connector, light almond	61110-RT6	61110-BT6	61110-JT6
eXtreme Cat 6 Component-Rated UTP QuickPort Connector, grey	61110-RG6	61110-BG6	61110-JG6
eXtreme Cat 6 Component-Rated UTP QuickPort Connector, crimson red	61110-RC6	61110-BC6	61110-JC6
eXtreme Cat 6 Component-Rated UTP QuickPort Connector, yellow	61110-RY6	61110-BY6	61110-JY6
eXtreme Cat 6 Component-Rated UTP QuickPort Connector, green	61110-RV6	61110-BV6	61110-JV6
eXtreme Cat 6 Component-Rated UTP QuickPort Connector, purple	61110-RP6	61110-BP6	61110-JP6
eXtreme Cat 6 Component-Rated UTP QuickPort Connector, brown	61110-RB6	61110-BB6	61110-JB6
eXtreme Cat 6 Component-Rated UTP QuickPort Connector, dark red	61110-RR6	61110-BR6	61110-JR6



<b>Leviton Network Solutions</b> 2222 - 222nd St. SE Bothell, WA 98021-4416  tel 1-800-824-3005 tel +1-425-486-2222 appeng@leviton.com www.leviton.com	<b>Asia / Pacific</b> T +1.631.812.6228 E infoasean@leviton.com	<b>Canada</b> T +1.514.954.1840 E pcservice@leviton.com	<b>Caribbean</b> T +1.954.593.1896 E infocaribbean@leviton.com	<b>China</b> T +852.2774.9876 E infochina@leviton.com	<b>Colombia</b> T +57.1.743.6045 E infocolombia@leviton.com
	<b>Europe</b> T +33.6.8869.1380 E infoeurope@leviton.com	<b>India / SAARC</b> T +971.4.886.4722 E infoindia@leviton.com	<b>Mexico</b> T +52.55.5082.1040 E lsamarketing@leviton.com	<b>Middle East &amp; Africa</b> T +971.4.886.4722 E lmeinfo@leviton.com	<b>South Korea</b> T +82.2.3273.9963 E infokorea@leviton.com