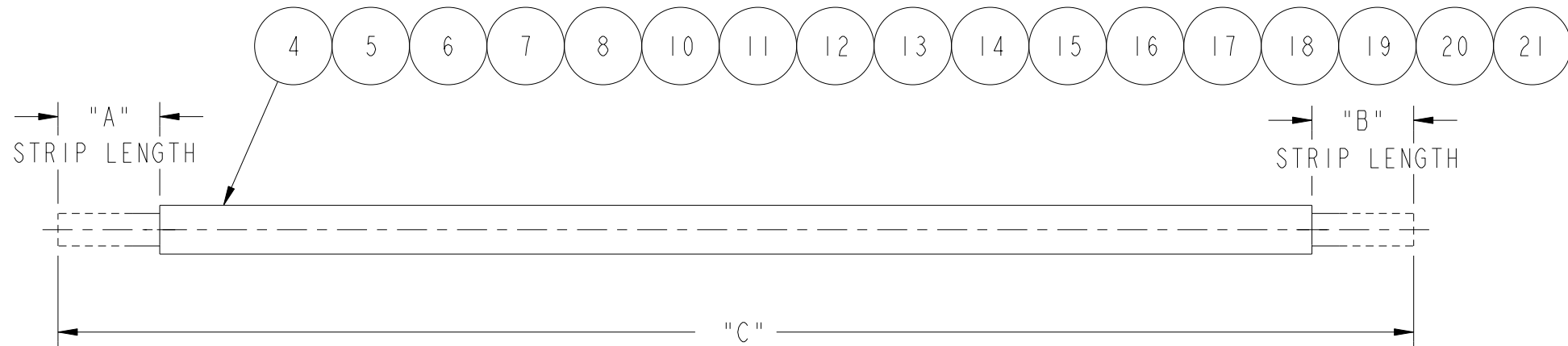
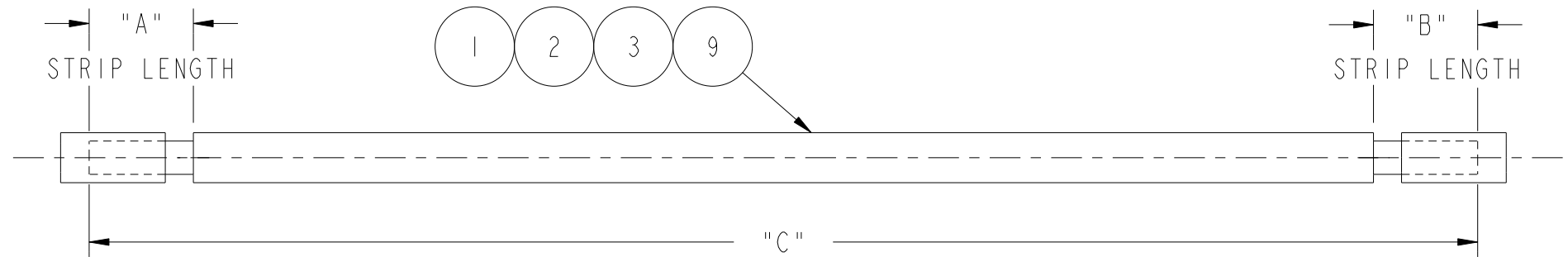


ITEM	"A"	"B"	"C"
H01	3/16"	1/8"	2.50"
H02	3/16"	1/8"	1.70"
H03	3/16"	1/8"	1.70"
H04	3/32"	3/32"	2.00"
H05	1/4"	1/4"	2.48" (+0.02"/-0.04")
H06	3/32"	3/32"	3.00"
H07	3/32"	3/32"	3.00"
H08	3/32"	3/32"	2.00"
H09	3/16"	1/8"	2.00"
H10	1/16"	3/32"	3.00"
H11	1/16"	3/32"	3.00"
H12	1/4"	1/4"	2.48"
H13	1/4"	1/4"	2.50"
H14	3/16"	1/8"	3.50"
H15	3/16"	1/8"	1.70"
H16	3/16"	1/8"	3.50"
H17	1/8"	3/32"	2.50"
H18	1/8"	3/32"	2.50"
H19	3/16"	1/8"	5.00"
H20	3/32"	3/32"	1.70"
H21	3/32"	3/32"	1.70"



UNLESS OTHERWISE SPECIFIED DIMENSIONS IN INCHES X.X ±0.1 X.XX ±0.02 X.XXX ±0.005 X° ±1 X.X° ±0.5 DRAWING IN ACCORDANCE WITH ASME Y14.5M-1994 (X.XX±XX) SYMBOLS PER (ST) 468-1143 ENG/MFG REFERENCE PRODUCT CODE: 3704AD	DRAFTER/DESIGNER E. BAEZ		DATE (YYYY/MM/DD) 2019/11/11
	ENGINEERING APPROVED R. HERRERA	MANUFACTURING M. ROSARIO	
	REVISION DESCRIPTION ON TABLE : COLUMN "C" WAS NOT ON. ON BOTH MODEL VIEW : LENGTH "C" WAS NOT ON		ECO# ECO-175553
	ENG/MFG REFERENCE PRODUCT CODE: 3704AD		

EATON CORPORATION - CONFIDENTIAL AND PROPRIETARY NOTICE TO PERSONS RECEIVING THIS DOCUMENT AND/OR TECHNICAL INFORMATION THIS DOCUMENT, INCLUDING THE DRAWING AND INFORMATION CONTAINED THEREON, IS CONFIDENTIAL AND IS THE EXCLUSIVE PROPERTY OF EATON CORPORATION, AND IS MERELY ON LOAN AND SUBJECT TO RECALL BY EATON AT ANY TIME. BY TAKING POSSESSION OF THIS DOCUMENT, THE RECIPIENT ACKNOWLEDGES AND AGREES THAT THIS DOCUMENT CANNOT BE USED IN ANY MANNER ADVERSE TO THE INTERESTS OF EATON AND THAT NO PORTION OF THIS DOCUMENT MAY BE COPIED OR OTHERWISE REPRODUCED WITHOUT THE PRIOR WRITTEN CONSENT OF EATON. IN THE CASE OF CONFLICTING CONTRACTUAL PROVISIONS, THIS NOTICE SHALL GOVERN THE STATUS OF THIS DOCUMENT. © 2007 Eaton Corporation, All Rights Reserved.		
TITLE ARC FAULT CIRCUIT BREAKER COMBINATION ARC FAULT SUPPLY AND TEST WIRE DETAILS		
SIZE B	DRAWING NUMBER 66B1140	REVISION 013
CHANGE RESPONSIBILITY RWDD_MCB_ENGINEERING		
EATON	CLASS CODE N/A	SCALE 3.000 : 1.000
		SHEET 1 OF 1