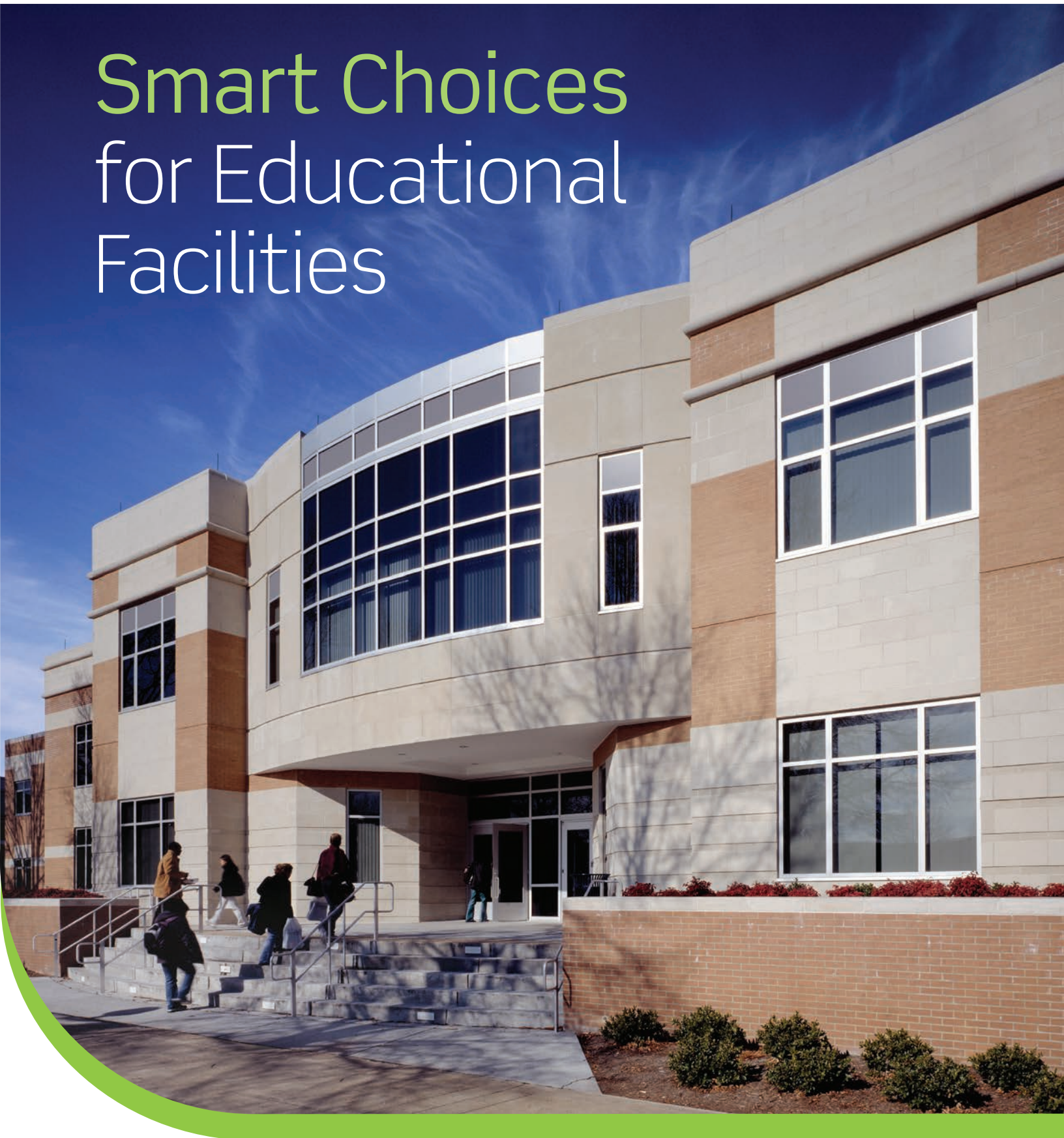


Smart Choices for Educational Facilities



Lighting and Energy Management, Electrical, and Network Solutions

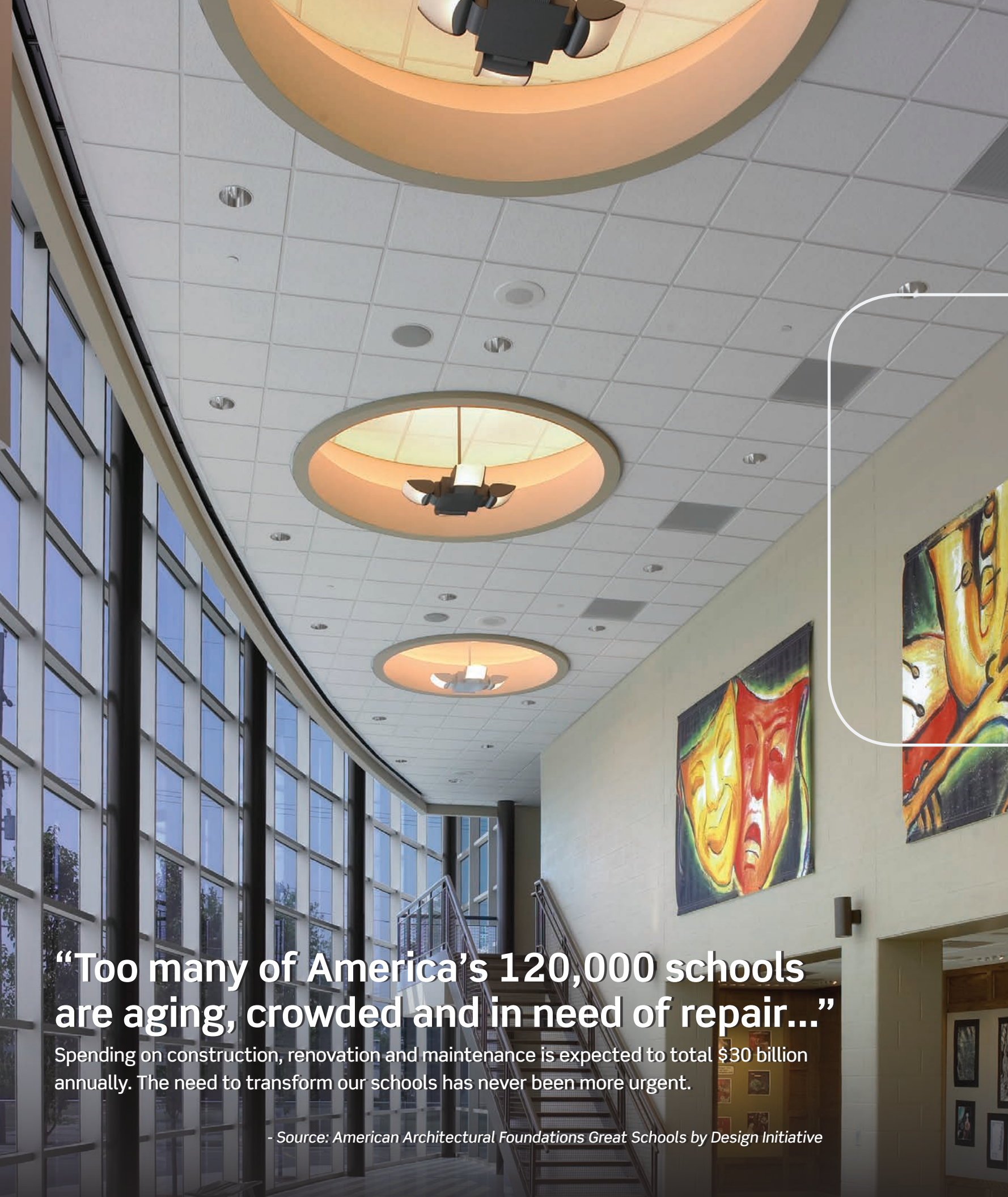


The smart choice for educational facilities

With over 100 years experience and a reputation for reliability, innovation and value, we're the brand standard for the country's leading educational facilities. We've created smart solutions for classrooms, cafeterias, auditoriums and more. Our state-of-the-art wiring, high speed data connections and energy-saving lighting controls contribute to a safer, more productive learning environment while improving energy conservation.

Today, we're the market share leader in GFCIs as well as other electrical safety devices for public facilities. Leviton has a comprehensive product line of electrical, lighting, energy management and data networking devices — over 26,000 products in all — many engineered specifically for educational industry needs. We're also the undisputed leader in meeting today's energy codes. Nine out of 10 U.S. buildings use our low-voltage products.

Supported by over 600 patents and a fully integrated service approach, Leviton is the go-to resource for many of the world's top facilities.



“Too many of America’s 120,000 schools are aging, crowded and in need of repair...”

Spending on construction, renovation and maintenance is expected to total \$30 billion annually. The need to transform our schools has never been more urgent.

- Source: American Architectural Foundations Great Schools by Design Initiative



From Kindergarten through Grad School

Leviton has Solutions for the Schools of Today and Tomorrow.

Most educational facilities, both public and private, face many of the same challenges:

- Servicing a growing enrollment within aging facilities with fewer resources, while remaining compliant with increased safety regulations and updated building codes.
- Large facilities today must account for rising energy costs and increased demand on data infrastructure.
- Strict energy codes and green building initiatives are challenging educational facilities to meet ever rising standards.

Leviton is focused on these challenges, too. We understand the electrical industry, and we’ve created solutions built around your specific needs. We provide electrical wiring devices, data connectivity products and lighting energy management systems to the world’s leading public and private facilities. In addition, we help with innovative ideas to boost services, cut costs and ease maintenance challenges. On the next few pages, discover a few of the ways Leviton can help you.



From the Lab
to the Lecture Hall,
Leviton Solutions are
the Smart Choice

Academic Areas/Buildings

Classrooms, Lecture Halls, Media Centers
and Science/Engineering Labs

Data Centers/Communication Rooms

Entrance and Electrical Rooms, Distribution Areas,
Office and Support Areas

Administration Areas/Buildings

Offices, Conference Rooms, Lobby/Common
Areas and Break Rooms

Residence Halls

Dorm Rooms, Common and Laundry Areas,
and Bathroom Facilities

Health Services

Exam Rooms, Administrative Areas,
Waiting Rooms and Critical Care Areas

Athletic, Recreation and Performance Spaces

Gymnasiums, Stadiums, Concession Areas,
Auditoriums and Media Rooms

Mechanical Rooms

Generator Rooms, HVAC Equipment
and General Maintenance Areas

Food Service

Cafeteria/Dining Areas, Kitchens,
Pantries and Serving Areas



Environmentally Responsible Learning Environments

Lighting Management

Schools spend a significant portion of their operating budgets on electricity, much of it on lighting. Lighting controls that reduce the draw on electricity through dimming and automatic switching can reduce consumption dramatically.

Occupancy sensors alone can have a dramatic impact on energy and cost savings. The following chart, based on an E Source survey focusing only on the addition of occupancy sensors, highlights the significant energy savings they can provide.

Occupancy Area	Energy Savings
Private Office	13-50%
Classroom	40-46%
Conference Room	22-65%
Restrooms	30-90%
Corridors	30-80%
Storage Areas	45-80%

Incorporating more controls can yield more significant savings, while also creating a physical environment that enhances learning.

For example, in windowless classrooms, a basic bi-level switching system incorporates a simple mix of switches and sensors. Lights will turn on only when occupancy is detected and the switch is in the “on” position. Dividing luminaires into zones controlled by separate switches creates a pseudo dimming system. This can be useful to accommodate nap times, movie viewing and much more.

In a classroom with windows, a system like this can save a considerable amount of electricity: when the room is naturally brightened from sunlight some or all of the lights can remain off so that the room is lit to a comfortable level while reducing electricity consumption.

With daylighting systems, the lights in the classroom will automatically adjust themselves to a comfortable, user-defined light level in which students can thrive. Giving teachers the ability to override automatic settings lets them create the ideal atmosphere for a wide variety of classroom activities.



LEED® for Schools

New Construction

The U.S. Green Building Council’s (USGBC) Leadership in Energy and Environmental Design (LEED) Green Building Rating System™ is becoming the de facto standard for building design and construction. For schools, it is almost a mandate. And for good reason. Many studies have shown the dramatic reduction in operational costs of LEED certified buildings. According to a Capital E Report, Green Schools use 30% - 50% less energy and 30% less water than conventional buildings. Furthermore, this same report found that there was a 38.5% reduction in asthma in schools with improved air quality. And a study by the Hescong Mahone Group found that students achieved a 20% faster progression in math and 26% faster progression in reading in schools that incorporated daylighting systems. With this in mind, the new LEED for Schools Rating System recognizes the unique nature of the design and construction of K-12 schools; including both new facilities and major renovations.

Retrofit Solutions

According to the USGBC, “...with more than 126,000 schools in the U.S., the greatest opportunity for school districts and our nation is to transform our existing schools...”

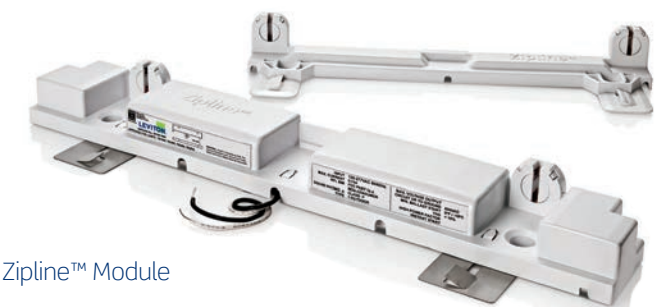
Upgrading older fluorescent lighting is one of the easiest, most cost effective means of reducing energy consumption in existing facilities. Zipline™, Leviton’s revolutionary fluorescent lighting retrofit system makes it even easier. Engineered to cut retrofit time BY UP TO 50%, zipline incorporates the ballasts and lampholders into 2, easy-to-install modules. A zipline two-lamp, 28 Watt system configuration can replace a 4-lamp T12 configuration and provide equal or superior lighting performance with an energy savings of up to 70%.

Additionally, our comprehensive line of wireless occupancy sensors can help you achieve significant operational energy and cost savings and lower installation costs by up to 50% compared to many hard-wired systems.

Throughout this brochure, you will see the many products and services that Leviton offers that can help you create your “School of the Future”.



Wireless Self-Powered Occupancy Sensor



Zipline™ Module

A Quality Learning Experience

Lighting Management Systems

Leviton lighting control systems and products provide architects, engineers and contractors with green solutions for LEED Certified Education Facilities. Our Daylighting systems automatically adjust fixture output levels to accommodate natural lighting in open areas. Dimmers and occupancy sensors offer anywhere from 20% to 80% energy savings and user-adjustable comfort throughout the facility. Leviton GreenMAX® Relay Panels provide energy-efficient lighting schedules in garages, outdoor parking lots and walkways.



Power Quality

Leviton Surge Protective Devices are essential smart grid products that protect all the sensitive electronic equipment throughout the facility, including computers, data networks and telecommunications. We provide surge protection panels for building entrance and branch panels, and surge modules for critical data center and equipment cabinet protection. For point-of-use protection, rely on Leviton surge receptacles and strips.



Network Solutions

In the education sector, network infrastructure must last from one funding cycle to the next — typically 8-12 years. So when planning new installations, schools generally choose leading-edge technologies that can support successive generations of active equipment, until new funding allows the next upgrade. Leviton has the high performance network connectivity to support all of the institution's communications, now and in the future, from voice and data to audio/visual, security systems, intercom and public address.





Academic Areas and Building Support

Classrooms, Lecture Halls, Library Media Centers, Science and Engineering Labs

Safe Power

The infusion of technology into classrooms and lecture halls has created the need for a robust electrical infrastructure. For delivering power to the electronic equipment typically used in these areas, Leviton offers a broad array of power distribution units and receptacles, including standard, isolated ground, surge protective, GFCI and tamper-resistant versions. Plus, Leviton offers the largest assortment of wallplates of any manufacturer in the world!

Classroom Connections

Computer labs and libraries rely on high-speed, mega-bandwidth networks for multiple users, online research and collaborative projects. To address networking infrastructure requirements, Leviton's CAT 6 and CAT 6A performance systems provide the fast, consistent connection you need. Leviton's Opt-X® Fiber Systems provide flexibility and simple integration with existing systems while still preparing for more advanced technologies to come. Each system includes a broad



selection of connectors, patch panels, enclosures and patch cords. For the addition of multimedia components such as high-definition televisions, smart boards, and sound systems, Leviton offers a complete line of audio/visual connector systems.

Demanding Environments

Science labs and other areas where electrical components and equipment are exposed to harsh conditions. Leviton offers Industrial Grade devices engineered to withstand harsh environments and surge protective devices to protect sensitive electrical equipment from potentially damaging power spikes. Leviton has the products you need to create a safe and reliable learning environment.

1. Tamper-Resistant Surge Receptacle
2. Multimedia Outlet System
3. Industrial Grade Plugs and Connectors
4. eXtreme® 6A Network Connectivity



Data Center and Communications Rooms

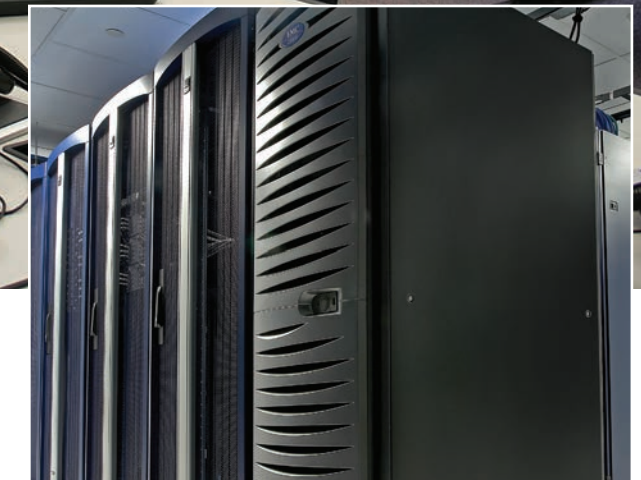
Network and Data Center, Electrical Rooms, Distribution Areas, Offices and Support Areas

Ease of Installation

Custom configure a broad selection of enclosures, copper and fiber trunk cables, harnesses and patch cords to speed data center installations. With factory termination, installation time is reduced by up to 80%. Zero-U VertiGO® Patch Panels save rack space and simplify moves, adds and changes. Opt-X Ultra® enclosures feature removable sliding trays to facilitate field terminations and splicing, while FastCAM® connectors deliver fast network deployment.

Equipment Protection

Protect your data and keep your data center up and running with Leviton FLX Series Power Distribution Units (PDUs) in 208V 3-phase and 208V and 120V single-phase options. FLX Series PDUs are configurable with a variety of NEMA and IEC outlet types, quantities and combinations. Switched Series PDUs feature SNMP alerts when power, humidity or temperature conditions exceed designated thresholds. All PDUs feature technology to help prevent overloads in high-density computing environments.



Network Solutions

Leviton offers integrated solutions designed specifically for data center environments that require unsurpassed performance, flexibility, reliability and scalability. Many of our products, including Opt-X Ultra® Fiber Optic Enclosures, and copper and fiber trunk cables, are custom configurable. Pre-terminated and field-terminated solutions, and extensive cable management make Leviton the go-to source for data center networks. Our huge selection of copper patch panels, including Flat, VertiGO® Zero-U, Angled and Recessed-Angled in both Quickport® and 110-punchdown styles are ideal for the telecommunications room.

1. Opt-X Ultra® Fiber Enclosures
2. Power Distribution Units
3. C1 Ultra Patch Panels
4. Pre-terminated Trunk Cables
5. Secure RJ Port Security



Administration Areas and Buildings

Includes Spaces such as Offices, Conference Rooms, Lobby, Common Areas and Break Rooms

Ensuring Reliability

As the “hub” of school operations, it is imperative that the administrative areas foster the collaborative and productive behaviors expected in the classrooms. Office spaces must maintain reliable data management and communications equipment, while conference rooms require robust audio/video/data capabilities. With this huge volume of sensitive electronic equipment, power quality and delivery is critical to the operation. Leviton’s comprehensive line of surge arresters, panels and

point-of-use protection devices ensures maximum up-time of these systems along with protecting valuable equipment investments.

Flexible, Scalable Network Systems

Whether it’s across the campus or across the room, Leviton’s network solutions, such as the Opt-X® Fiber System or CAT 6A Component Rated System, support the backbone of the communication network.



Energy Efficient Lighting

Lighting Management also plays a crucial role in the productivity and sustainability of these spaces. With lighting energy consumption accounting for over 38% of a building’s energy usage, optimizing lighting usage becomes a critical concern for sustainability. Leviton offers a wide variety of lighting management products to suit any need. Leviton’s line of occupancy sensors and ez-MAX® line of lighting control relay panels help manage lighting in offices, conference rooms and public spaces. This not only saves energy and money, but in many cases is required by code.

1. EZ-Max™ Relay Panels
2. Surge Protective Panels
3. Wall-Mount Occupancy Sensors
4. Opt-X® Fiber Optic System



Residence Halls

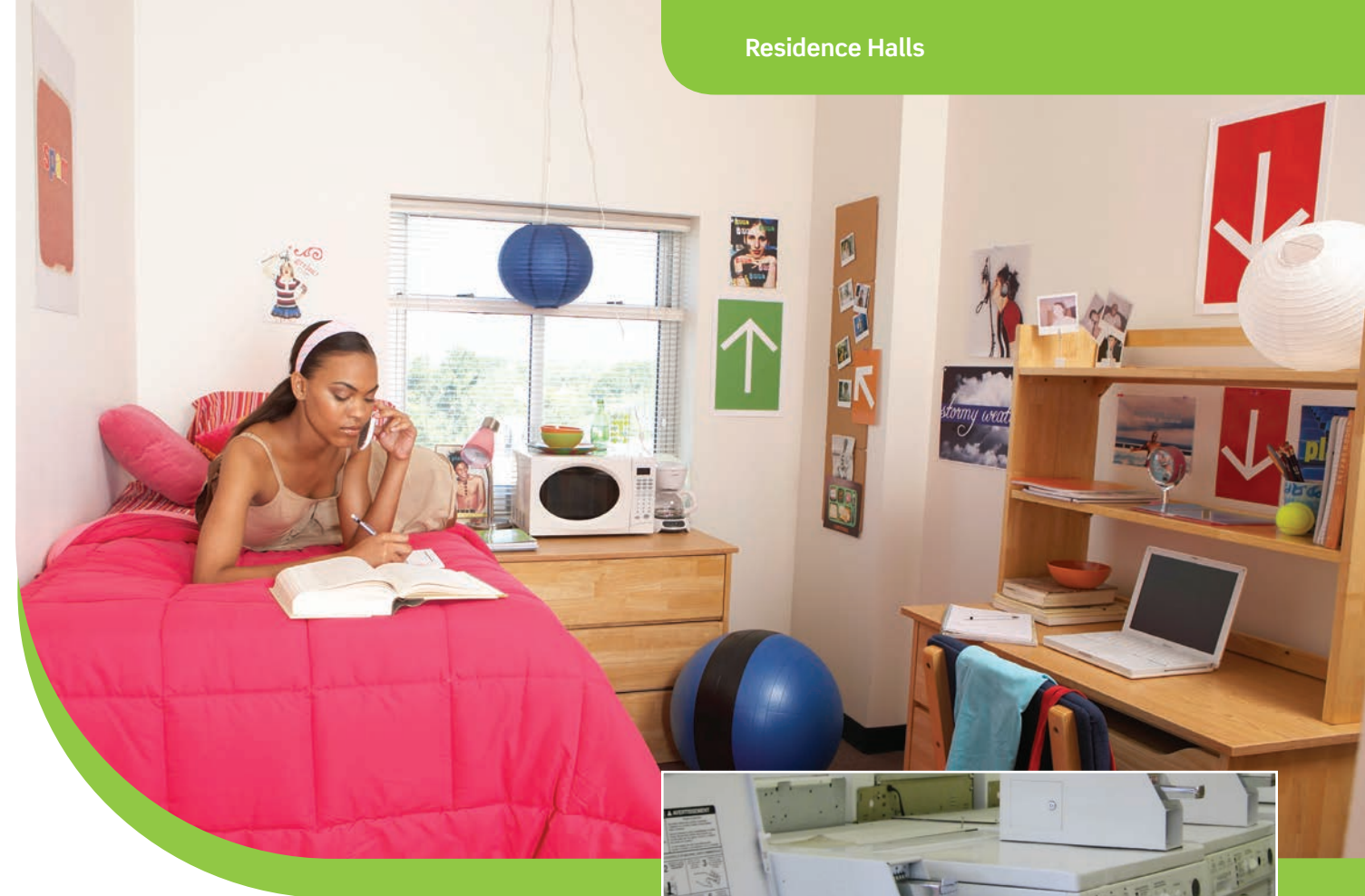
Rooms and Suites, Common Areas, Laundry Areas, Bathroom and Shower Facilities

Trustworthy Connections

Electrical safety is of paramount importance in any academic area, but especially in student housing areas. Leviton offers the broadest range of wiring devices in the industry, providing world-class quality, safety and ease-of-installation. The industry-exclusive tamper-resistant surge receptacles will protect students from incidental contact with live parts and protect sensitive electrical equipment as well. Leviton's Lev-Lok modular GFCI receptacles can be easily installed and replaced wherever ground fault protection is required.

Smart Solutions for Smart Devices

Portable electronic devices are rapidly becoming necessary for everyday life. And convenient mobile device charging solutions will be a welcome edition to any educational facility. Leviton's USB Charger/Tamper-Resistant Receptacle offers a ground-breaking 2.1A of charging power and a 15A/125V Tamper-Resistant Receptacle. For the ultimate in convenience, this state-of-the-art device has the capability to charge up to two USB powered electronic devices simultaneously utilizing the USB Ports, leaving the receptacle free for additional power needs.



Network Solutions

Students need reliable connections to keep up with research and schoolwork. Network connections need to be versatile and dependable, despite new users and constant moves, adds and changes. With Leviton's broad line of QuickPort® wallplates, housings and adapters, you can combine copper or fiber connectors at any outlet. Our Patented Retention Force Technology® built into our QuickPort® Connectors provides unequalled durability and reliability.

1. Tamper-Resistant Surge Receptacles
2. QuickPort® Wallplates and Connectors
3. Lev-Lok® GFCI Receptacles
4. Wall-Switch Occupancy Sensor
5. USB Charger/Tamper-Resistant Receptacle



Health Services

Patient and Examination Rooms, Administrative Areas, Waiting Rooms and Critical Care Areas

Hospital Grade Devices

The school-based healthcare areas serve a vital role in every educational facility and require the use of specialty wiring devices throughout. Regardless of the size and complexity of the facility, the requirement for safety of the infrastructure is the same. Whether it's the waiting area, nurse's station, patient's room or operating room, Leviton is known as the leader in hospital grade wiring devices.

Easy Maintenance and Versatility

Due to the nature of this environment, the electrical devices, such as plugs, connectors and receptacles tend to require more frequent maintenance and/or replacement. To make maintenance quicker and easier, Leviton's exclusive Lev-Lok® receptacles are available in Hospital Grade, Tamper-Resistant and "MRI-safe" versions. Since power quality is equally important, especially in critical care areas, Leviton offers point-of-use surge protective and isolated ground devices in Hospital Grade versions.



Secure Networking

With HIPAA requirements, digital imaging, patient monitoring and other demanding technologies, a reliable network is essential. Downtime is not an option. Requirements for speed, bandwidth and data storage are constantly increasing and Leviton is dedicated to providing the smart solutions needed to maintain a solid, reliable network.

1. Hospital Grade Surge Protective Power Strips
2. Hospital Grade Surge Receptacles
3. Ceiling Mounted Occupancy Sensors
4. Shielded Networking
5. Duraport® Industrial Network Connectivity



Athletic and Recreation Spaces

Gymnasiums, Stadiums, Concession Areas and Media Rooms

Learning Can Be Fun

Regardless of the student's age, recreation and athletic programs are more than just a break from their studies; it is an extension of their learning. For younger students, it is a means for developing cognitive and social skills. As students mature, these programs translate into big-business. As a result, many institutions invest heavily in their athletic and recreation spaces. Leviton's broad array of product offerings enables designers, architects and contractors to achieve their goals when designing these spaces. From power delivery to communications to lighting, Leviton has a solution.

Safe Environments

During most construction projects, there is a demand for providing power to the site safely. Leviton offers a variety of temporary power products used on the job site such as high-amperage single pole cam connectors for power distribution, portable outlet boxes, GFCI cord sets for personnel safety, etc. In areas where you need to prevent accidental or unauthorized use of electronic controls, such as partition walls or door openers in a gymnasium, Leviton offers a variety of industrial grade key lock switches. For concession areas, our line of watertight connectors, disconnects, switches and GFCI devices ensure that the area stays safe, while our audio/video/data products keep the entertainment alive.



Lighting Management

For gymnasium, arena and theater lighting, Leviton offers a complete line of entertainment lighting fixtures and controls. Our GreenMAX® systems can control several or several hundred stadium lights with ease and reliability.

1. GreenMax® Relay Control Panel
2. Safety Disconnect Switches
3. GFCI Cord Sets
4. Key Locking Switches



Performance Spaces

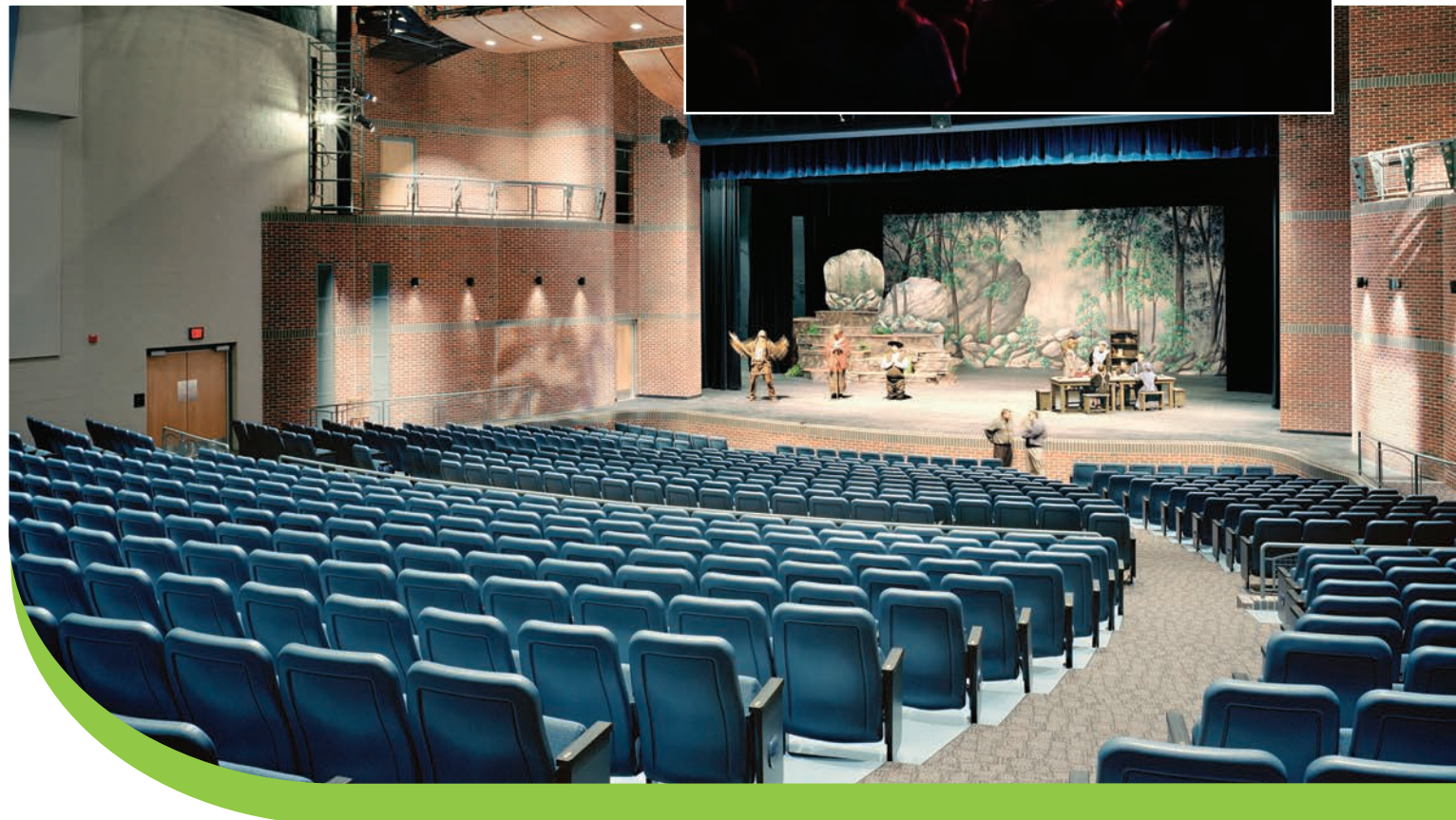
Concert Halls, Auditoriums and Amphitheatres

The Show Must Go On

Schools require lighting control solutions that combine innovation and simplicity with aesthetics, flexibility and superior lighting design. Leviton's design, product selection and service deliver a cohesive solution to your complex lighting challenges. Schools want their performance areas to provide quality entertainment and an excellent educational experience.

Our approach is a customized turnkey system. With several control packages to choose from, there's a system that's right for your facility. Need an eight-light configuration? Just add an expansion kit to your base system. It's the easy, cost-effective way to build the system that works for you.

From basic dimming consoles, such as our 3000 series, to advanced computer controlled theatrical lighting, such as our Innovator series, Leviton can help you turn an amateur production into a truly professional event. From elliptical spotlights and fresnels, to par cans and cyc lights, to lamps and color frames and gels, our experts will help you plan and select the right lighting solution for your application.



Reliable Connections

Our line of Stage Pin Connectors deliver the most rugged, reliable connection for any theatrical lighting application. The unique strain relief system assures industry leading security and the ergonomic design provides a comfortable grip. We also offer a broad line of single pole cam-type connectors, typically used on power distribution cables and boxes throughout the venue. These connectors feature rugged TPV insulators that are shatter and crack proof, and are self-compensating for wear to maximize service life.

In addition, we have a comprehensive line of industrial grade plugs, connectors and receptacles in both NEMA and Non-NEMA configurations, for indoor and outdoor applications, in both locking and non-locking blade formats. When performance matters, trust Leviton.



1. Entertainment Lighting Console
2. Entertainment Lighting Fixtures
3. Stage Pin Connectors
4. Single Pole Connectors



Mechanical Rooms

Mechanical Room, Generator Room, HVAC Equipment Room, Parking Areas and Building Exteriors

Electrical Safety

Mechanical/Electrical rooms are at the heart of any building. These are where all of the essential power systems that serve as the lifeblood for the building converge. These rooms house much of the HVAC Systems, pumps, motors and other machinery vital to the building's operation. Leviton offers a wide array of industrial grade motor controllers, mechanical interlock switches, safety disconnect switches, industrial grade plugs, connectors and receptacles to fit these needs.

Temporary Power

For temporary power applications, Leviton offers a wide array of single pole devices typically associated with portable generators and power distribution boxes. We also have a full line of portable outlet boxes and GFCI cordsets to ensure safe distribution of power where you need it.



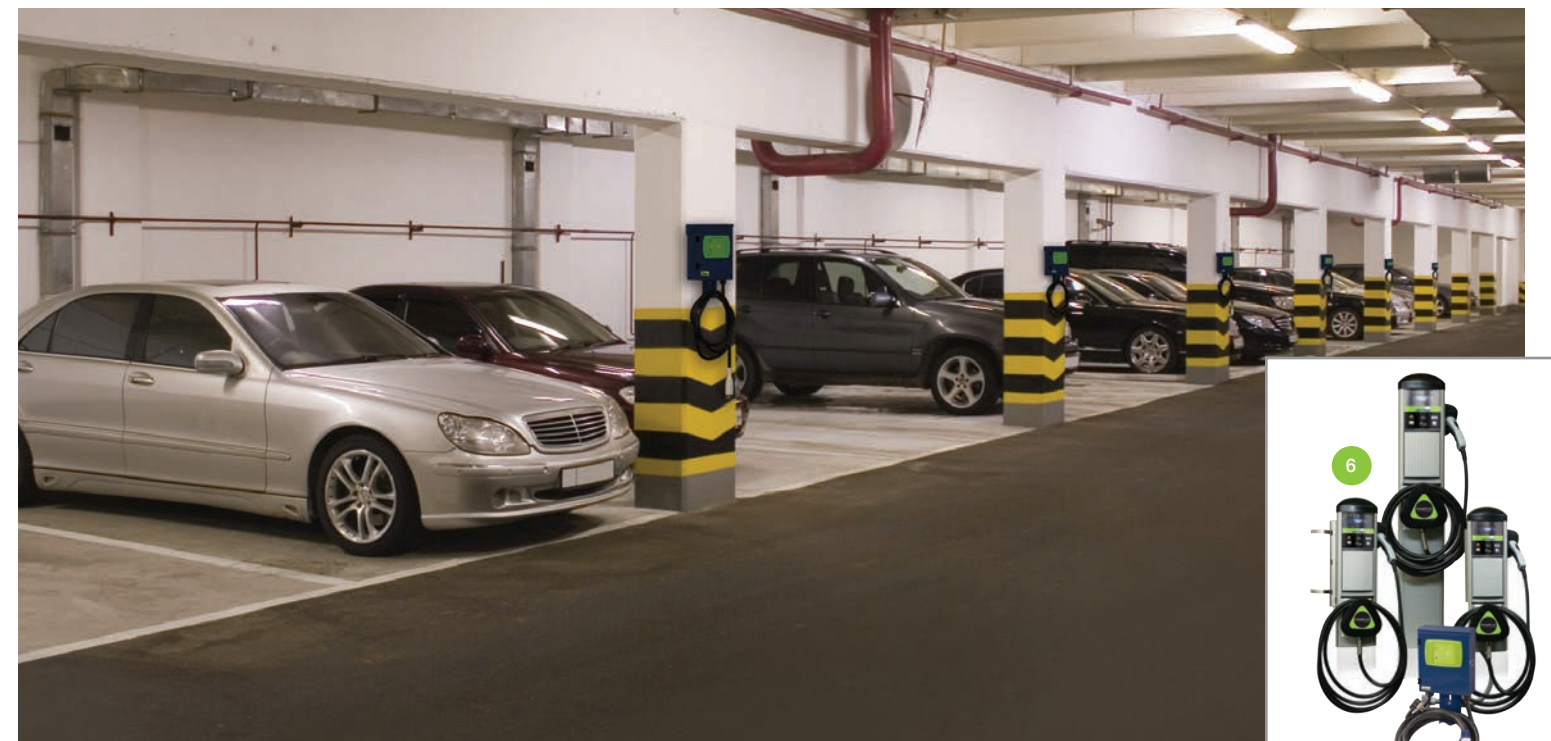
Building Safety and Security

Lighting systems play a key role in providing a safe and secure environment throughout the campus. Proper lighting for building exteriors and parking areas are critical as a means of personnel safety and general security.

Sustainability

Schools and Universities are at the forefront of driving initiatives that will reduce our dependence on fossil fuels as a means for creating a more sustainable environment. Electric vehicles provide a solution to help achieve that goal, and Leviton's Evr-Green line of electric vehicle charging stations provide the necessary "fueling" infrastructure to support the adoption of these vehicles.

1. Mechanical Interlock Switches
2. Weather-Resistant GFCIs and While-In-Use Covers
3. Single Pole Devices
4. Temporary Outlet Boxes
5. Outdoor Occupancy Sensor
6. Evr-Green EV Chargers



Food Service

Cafeteria and Dining Areas, Kitchens, Pantries and Serving Areas

Staying Connected

A growing trend in cafeteria design involves expanding the learning environment into this space. This includes creating spaces within the dining area where students can “plug-in”. Leviton is the first device manufacturer to offer Tamper-Resistant Surge Protective Receptacles that provide safety for the students and protection for their equipment.

Data connectivity can be accomplished using traditional copper solutions such as our eXtreme® CAT 6+ or CAT 6A systems. Leviton also offers a complete line of audio/visual connectors and cables to support multimedia components such as high definition televisions, projection and audio systems.

Lighting For Any Occasion

Lighting management is a key component from both an energy savings standpoint as well as adding to the aesthetics of the space. This is especially important as cafeterias typically serve multiple purposes, such as general assembly areas and/or community meeting space. Leviton's lighting management solutions address all of these needs. Utilizing a combination of occupancy sensors, architectural lighting controls and dimmers, you will have unprecedented control over your lighting needs.



Food Service



Kitchen Safety

Kitchen areas tend to require more rugged devices, as they can be exposed to moisture and high-abuse conditions. Leviton's Wetguard® plugs and connectors, DuraPort® Industrial Connectivity, Powerswitch® Motor Controllers and Safety Disconnects and a wide array of GFCI devices ensures safe, reliable power delivery to the food preparation areas.

1. Wetguard® Watertight Devices
2. Dimensions lighting control system
3. GFCI Receptacle
4. DuraPort® Industrial Network Connectivity

Product Ordering Guide

On the following pages please find an abbreviated product listing with helpful ordering info. For comprehensive info and specs please visit leviton.com or speak to your leviton sales rep.

Academic Areas and Building Support

Surge Receptacles

leviton.com/surge



Rating	Color	15A-125V	20A-125V
Tamper Resistant Duplex, Surge with Indicator Light and Audible Alarm	White	T7280-W	T7380-W
	Ivory	T7280-I	T7380-I
	Light Almond	T7280-T	—
	Gray	—	T7380-GY
	Red	T7280-R	T7380-R
	Blue	T7280-B	T7380-B

Black & White Straight Blade Plugs and Connectors

leviton.com/industrial



2-Pole, 3-Wire Grounding				
Description	15A-125V	15A-125V	15A-250V	15A-250V
Black & White Body	5266-C	5269-C	5666-C	5669-C
High-Visibility Yellow Body	5266-CY	5269-CY	5666-CY	5669-CY
Black & White Body Power Indication	5266-PLC	5269-PLC	—	—
Description	20A-125V	20A-125V	20A-250V	20A-250V
Black & White Body	5366-C	5369-C	5466-C	5469-C
High-Visibility Yellow Body	5366-CY	5369-CY	5466-CY	5469-CY
Black & White Body, Power Indication	5366-PLC	5369-PLC	—	—

eXtreme Cat 6A UTP System

leviton.com/extreme



Description	Cat. No.
C1 Ultra Composite QuickPort® Panel	C1255-H48
eXtreme CAT 6A Flat 110-Style Patch Panel	6A586-U24
eXtreme CAT 6A Angled 110-Style Patch Panel	6A587-U48
1RU 24-Port QuickPort Flat Panel	6910G-U24
1RU 48-Port QuickPort Die-Cast Flat Panel	6910G-D48
<i>*Additional colors and options available</i>	
C1 Ultra Composite 110-Style Patch Panel	C1686-U48
eXtreme 6+ CAT 6 Flat 110-Style Patch Panel	69586-U24
eXtreme 6+ CAT 6 Angled 110-Style Patch Panel	69587-U48
eXtreme 6+ CAT 6 Recessed-Angled 110-Style Patch Panel	6W587-U48

QuickPort CAT 6A UTP Connectors

leviton.com/quickport



Description	Part No.
eXtreme CAT 6A Component-Rated Connector	6A10G-R*6
eXtreme CAT 6A Channel-Rated Connector	6110G-R*6
<i>*Additional colors and options available</i>	

Multimedia Outlet System Housings and Modules

leviton.com/mos



Description	White	Lt. Almond	Ivory	Grey	Black
Single-Gang Wallplate	41290-SMW	41290-SMT	41290-SMI	41290-SMG	41290-SME
2-Port QuickPort Module (1 unit high)	41291-2QW	41291-2QT	41291-2QI	41291-2QG	41291-2QE
HD-15 Module, feedthrough	41293-HDW	41293-HDT	41293-HDI	41293-HDG	41293-HDE
RCA Module, 3-Port (red, white, yellow) 110 termination	41292-AEW	41292-AET	41292-AEI	—	—

Data Center and Communications Rooms

Opt-X Ultra Rack Mount Enclosures

leviton.com/optx



Description	Maximum Capacity				Part No.
	Fibers (using LC)	Adapter Plates	and Splice Trays or	MTP Modules	
Opt-X Ultra 1RU, empty, sliding tray	72	3	3	3	5R1UH-S03
Opt-X Ultra 2RU, empty, sliding tray	144	6	6	6	5R2UH-S06
Opt-X Ultra 4RU, empty, sliding tray	288	12	12	12	5R4UH-S12

Data Center and Communications Rooms

Power Distribution Units

leviton.com/pdu



Part No.	Plug Type	Input Voltage	Continuous	Power	Voltage	Output Receptacle Qty & Type	Max. Current
FM106-10S	5-20P	120V Single-Phase	16A	2.0 kW	120V	(24) 5-20R	16A Total
FM107-10L	L5-20P	120V Single-Phase	16A	2.0 kW	120V	(24) 5-20R	16A Total
FM105-10L	L5-30P	120V Single-Phase	24A	3.0 kW	120V	(24) 5-20R	24A Total

C1 Ultra Patch Panels

leviton.com/network



Description	CAT 6	CAT 5e	Empty
2RU 48-Port 110-Style Flat Composite Panel	C1686-U48	C1586-U48	
2RU 48-Port QuickPort Flat Composite Panel			C1255-H48
2RU Blank Panel /Cable Manager			C1253-2CM

Pre-Terminated Fiber Trunks

leviton.com/fiber



Opt-X® Unity 40/100G
MTP-MTP (2x12)
MTP-MTP (1x24)

Secure RJ Port Blockers, Tools and Patch Cords

leviton.com/network



Description	Part No.
CAT 6 SlimLine Patch Cord, with Secure RJ housing on both ends	SRJ6+-xx
Secure RJ Port Blocker, pack of 12	SRJPB-00+
Secure RJ Extraction Tool, pack of 1	SRJET-00+
<i>*+Additional colors and options available</i>	

Administration Areas and Buildings (continued on next page)

Surge Panels

leviton.com/surge



Cat. No.	Description	Voltage (V AC) Configuration	Max Surge Current, Per Mode (Per Phase)
32120-1	4-Mode Surge Protection Panel	120/240 Single-phase, 2-wire + gnd	80kA (80kA)
32120-DY3	7-Mode Surge Protection Panel	120/208 3Ø WYE, 4-wire + gnd; 208 3Ø Delta,	
32277-DY3	3-wire + gnd; 220 3Ø Delta, 3-wire + gnd 7-Mode Surge Protection Panel	220/380 3Ø WYE, 4-wire + gnd; 277/480 3Ø WYE,	80kA (80kA)
32412-DS3	4-wire + gnd; 240 3Ø Delta, 3-wire + gnd; 480 3Ø Delta, 3-wire + gnd 80kA 7-Mode Surge Protection Panel 4-wire + gnd 80kA	120/240/120 3Ø Hi-leg Split Phase Delta, (80kA)	(80kA)
42120-1	4-Mode Surge Protection Panel	120/240 Single-phase, 2-wire + gnd 80kA	(80kA)
42120-DY3	7-Mode Surge Protection Panel 3-wire + gnd; 220 3Ø Delta, 3-wire + gn	120/208 3Ø WYE, 4-wire + gnd; 208 3Ø Delta,	80kA (80kA)
42277-DY3	7-Mode Surge Protection Panel 277/480 3Ø WYE, 4-wire + gnd; 480 3Ø Delta, 3-wire + gnd	220/380 3Ø WYE, 4-wire + gnd; 240 3Ø Delta, 3-wire + gnd; 80kA (80kA)	80kA (80kA)
42412-DS3	7-Mode Surge Protection Panel 4-wire + gnd	120/240/120 3Ø Hi-leg Split Phase Delta, 80kA (80kA)	80kA (80kA)
32347-DY3	4-mode Surge Protection Panel 3-wire + gnd	347/600 3Ø WYE, 4-wire + gnd or 3Ø Delta, 80kA (80kA)	80kA (80kA)
42347-DY3	4-mode Surge Protection Panel 3-wire + gnd	347/600 3Ø WYE, 4-wire + gnd or 3Ø Delta, 80kA (80kA)	80kA (80kA)

Product Ordering Guide

Administration Areas and Buildings (continued)

Multi-Technology Wall-Mount Occupancy Sensors

leviton.com/les



Description	Cat. No.	Coverage	Operating Frequency	Color
Wall-Mount Multi-Technology Occupancy Sensor	OSW12-MOW	115°, 1200SF	32kHz	Off-W
Wall-Mount Multi-Technology Occupancy Sensor with Isolated Relay	OSW12-RMW	115°, 1200SF	—	W

EZ-Max Plus Relay Panels

leviton.com/greenmax



Description	Cat. No.
EZ-MAX Plus 8 Panel, 120V, 277V, and 347V, No Relays	R08BD-000
EZ-MAX Plus 24 Panel, 120V, 277V, and 347V, No Relays	R24BD-000
EZ-MAX Plus 8 Panel, 230V, No Relays	R08BF-000
EZ-MAX Plus 24 Panel, 230V, No Relays	R24BF-000

Residence Halls

QuickPort Single-Gang Wall Plates

leviton.com/quickport



Description	White	Lt. Almond	Ivory	Grey	Black	Brown
6-Port Wallplate	41080-6WP	41080-6TP	41080-6IP	41080-6GP	41080-6EP	41080-6BP
4-Port Wallplate	41080-4WP	41080-4TP	41080-4IP	41080-4GP	41080-4EP	41080-4BP
3-Port Wallplate	41080-3WP	41080-3TP	41080-3IP	41080-3GP	41080-3EP	41080-3BP
2-Port Wallplate	41080-2WP	41080-2TP	41080-2IP	41080-2GP	41080-2EP	41080-2BP
1-Port Wallplate	41080-1WP	41080-1TP	41080-1IP	41080-1GP	41080-1EP	41080-1BP

Tamper-Resistant Residential Grade Receptacles

leviton.com/tamper-resistant



Description	Color	15A-125V	20A-125V
		Cat. No.	Cat. No.
Duplex, Tamper-Resistant	White	T5320-W	T5820-W*
	Ivory	T5320-I	T5820-I*
	Light Almond	T5320-T	T5820-T*
	Black	T5320-E	T5820-E*
	Brown	T5320	-
Self-Grounding		Grey	T5820-G

USB Charger/Tamper-Resistant Receptacle

leviton.com/usb



Description	Rating	Cat. No.	Color
USB Charger/Tamper-Resistant Receptacle	2.1 A USB 15 AMP, 125V	T5630-W	White
USB Charger/Tamper-Resistant Receptacle	2.1 A USB 15 AMP, 125V	T5630-T	Light Almond

Lev-Lok GFCI Receptacles

leviton.com/levlok



2-Pole 3-Wire Grounding			
Description	Color	Cat. No.	Cat. No.
		15A-125V	20A-125V
Duplex, Tamper Resistant	White	MT759-W	MT789-W
	Ivory	MT759-I	MT789-I
	Light Almond	MT759-T	MT789-T
	Grey	MT759-GY	MT789-GY
	Black	MT759-E	MT789-GY
	Brown	MT759	MT789

Decora® Wall Switch Infrared Occupancy Sensors

leviton.com/decora



Description	Cat. No.	Rating	Coverage	Color
Decora Wall Switch PIR Occupancy Sensor	ODS10-ID	Incandescent: 800W @ 120V. Fluorescent: 1200VA @ 120V, 2700VA @ 277V. For 60Hz AC only. Motor: 1/4HP @ 120V	180°, 2100SF	W, I, T, G, E, R
Decora Wall Switch PIR Occupancy Sensor with Self-Adaptive Technology	ODS15-ID	Incandescent: 1800W @ 120V. Fluorescent: 1800VA @ 120V, 4000VA @ 277V. 50/60Hz. Motor: 1/4HP @ 120V	180°, 2100SF	W, I, T, G, E

On the following pages please find an abbreviated product listing with helpful ordering info. For comprehensive info and specs please visit leviton.com or speak to your leviton sales rep.

Health Services

Ceiling-Mount Occ Sensors

leviton.com/les



Description	Cat. No.	Coverage	Operating Frequency	Color
Ceiling-Mount Multi-Technology Occupancy Sensor	OSC05-MOW	180°, 500SF	40kHz	Off-White
Ceiling-Mount Multi-Technology Occupancy Sensor	OSC10-MOW	360°, 1000SF	40kHz	Off-White
Ceiling-Mount Multi-Technology Occupancy Sensor	OSC20-MOW	360°, 2000SF	32kHz	Off-White

** Isolated Relay Models also available*

Surge Protective Strips with Hospital Grade Receptacles

leviton.com/surge



Catalog Number	Application	Maximum Input Current	Joules	Enclosure	On/Off Switch	Cord Length
5300-H15	Hospital	15 Amp	952	Steel	No	15 Feet
5300-HTS	Hospital	15 Amp	952	Steel	No	6 Feet
5300-HT2	Hospital	20 Amp	952	Steel	No	6 Feet

QuickPort CAT 6A/65A Shielded Connectors

leviton.com/quickport



Description	Part No.
Shielded CAT 6A Connector	6ASHD-S6A
Shielded CAT 6 Connector	6S180-SH6
Shielded CAT 5e Connector	5S180-SH5

Hospital Grade 4-In-1 Surge Protective Receptacles

leviton.com/surge



Description	Color	Cat. No.	Cat. No.
4-IN-1 Surge Protective Receptacles	White	8480-W	8490-W
	Red	8480-R	8490-R
	Ivory	8480-I	8490-I
Isolated Ground 4-IN-1 Surge Protective Receptacles	Ivory	8480-IGI	8490-IGI
	Orange	—	8490-IGO
	Blue	8480-IGB	8490-IGB

**Additional colors and options available*

Athletic and Recreational Spaces (continued on next page)

GFCI Cord Sets

leviton.com/gfci



Automatic Reset	15A-120V	
	Color	Cat. No.
20 ft Cord Set with Fluorescent Work Light (12 AMP)	Black	66591-WL
6 ft Cord Set, Straight Blade Plug & Connector	Black	GFA15-6C
25 ft Cord Set, Straight Blade Plug & Connector	Black	GFA15-25C
3 ft Cord Set, Straight Blade Plug & Triple Tap Connector	Black	GFA15-3TC
37 ft Power Supply Cord, Straight Blade Plug, No Connector	Black	GFA15-37E
3 ft Cord Set, Straight Blade Plug & Connector	Black	GFA20-3C
37 ft Power Supply Cord	Black	GFA20-37E
Manual Reset		
3 ft Cord Set, Straight Blade Plug & Connector	Yellow	69591-3
25 ft Cord Set, Straight Blade Plug & Connector	Yellow	69591-25
3 ft Cord Set, Wetguard® Plug & Connector	Yellow	69591-W3
25 ft Cord Set, Wetguard® Plug & Connector	Yellow	69591-W25

Key Locking Switches

leviton.com/industrial



Rating	20A - 120/277VAC	
Description	Color	Cat. No.
Single-Pole Key Lock Power Switch, 2 keys provided	Nickel Plated	1221-2KL
Double-Pole Key Lock Power Switch, 2 keys provided	Nickel Plated	1222-2KL
3-Way Key Lock Power Switch, 2 keys provided	Nickel Plated	1223-2KL
4-Way Key Lock Power Switch, 2 keys provided	Nickel Plated	1224-2KL
Replacement Keys, 2 per pack	—	2KL

GreenMax

leviton.com/greenmax



Description	Cat. No.
GreenMAX Relay Cabinet, 8-Relay Size, NEMA 1	R08TC-100
GreenMAX Relay Cabinet, 16-Relay Size, NEMA 1	R16TC-100
GreenMAX Relay Cabinet, 32-Relay Size, NEMA 1	R32TC-100
GreenMAX Relay Cabinet, 48-Relay Size, NEMA 1	R48TC-100

Product Ordering Guide

Athletic and Recreational Spaces (continued)

Safety Disconnect Switches

leviton.com/industrial

Description	Amps	Max Voltage	RMS Symmetrical Amperes	Cat No.
Non-Fused	30	600VAC	10,000A	DS30-AX
	60	600VAC	50,000A	DS60-AX
	100	600VAC	50,000A	DS100-AX
Ratings Fused	30	600VAC	200,000A	DS30-FAX
	60	600VAC	200,000A	DS60-FAX
Switched Enclosure with receptacle bracket, Non-Fused	30	600VAC	10,000A	EDSR-23
	30	600VAC	10,000A	MDSR-23



Performance Spaces

Entertainment Lighting Consoles 8700 Series

leviton.com/les

Rating	Part Number	Sub-Masters	Channels	DMX Outputs	VGA Outputs
GX Series with integral touch screen and keyboard	P8724-GX	24	2048	4	4
	P8748-GX	48			
	P8724-GXT (touring)	24			
GS Series with integral keyboard	P8724-gs	24	1024	2	2
	P8748-gs	48			
	P8724-gst (touring)	24			
GL Series	P8724-gL	24	512	1	1
	P8724-gLt (touring)				



Single Pole 16 Series Cam-Type Connectors

leviton.com/temporarypower

Description	Color	Cat. No. Complete	Description	Color	Cat. No. Insulator
Male Detachable Plug - Single Set Screw (Cable Size: #2-2/0)	Black	16D21-E	Male Detachable Plug - Double Set Screw White (Cable Size: 1/0-4/0)	16D24-W	White
	Brown	16D21-H		16D24-GY	Grey
	Red	16D21-R		16D24-E	Black
	Blue	16D21-B		16D24-H	Brown
	Orange	16D21-O		16D24-R	Red
	Green	16D21-G		16D24-B	Blue
	Yellow	16D21-Y		16D24-O	Orange
Female Detachable Plug - Single Set Screw (Cable Size: #2-2/0)	White	16D21-W	16D24-G	Green	
	Black	16D29-E	16D24-Y	Yellow	
	Brown	16D29-H	16D33-W	White	
	Red	16D29-R	16D33-GY	Grey	
	Blue	16D29-B	16D33-E	Black	
	Orange	16D29-O	16D33-H	Brown	
	Green	16D29-G	16D33-R	Red	
Yellow	16D29-Y	16D33-B	Blue		
White	16D29-W	16D33-O	Orange		
			16D33-G	Green	
			16D33-Y	Yellow	



Entertainment Lighting Fixtures

leviton.com/les

Fresnel - Theater	
6" theater Fresnel, Bare Wire	Fr1TH-50B
8" theater Fresnel, Bare Wire	Fr2TH-50B
<i>*Also available with 20A Male Stage Pin, 15A Edison, 20A Locking plugs</i>	
LEO	
LEo, 15° Beam angle, Bare Leads	LEL15-00B
LEo, 19° Beam angle Bare Leads, Black	LEL19-00B
LEo, 26° Beam angle Bare Leads, Black	LEL26-00B
LEo, 36° Beam angle Bare Leads, Black	LEL36-00B
LEo, 50° Beam angle Bare Leads, Black	LEL50-00B
<i>*Also available with Stage Pin, 5-15, 5-20 plugs</i>	



Stage Pin Devices

leviton.com/temporarypower

Description	Color	Cat. No.
Male Plug-Screw Terminal	Black	20MP-E
Male Plug-Crimp Terminal	Black	20MC-E
Female Connector-Screw Terminal	Black	20FP-E
Female Connector-Crimp Terminal	Black	20FC-E
Panel Mount Male Inlet-Set Screw Terminal, Snap-In Mounting	Black	20IS-E
Panel Mount Female Receptacle-Screw Terminal, Snap-In Mounting	Black	20RS-E



Mechanical Rooms and Parking Areas

Mechanical Interlock Switches

leviton.com/industrial

Amps	Wiring	VoltageAC	Non-Fused Mech. Interlock	HP Rating	Fused Mech. Interlock	HP Rating	Cat. No. Use Plug
20	2p3w	240	320MI6W	3	—	—	320P6W
	2p3w	480	320MI7W	5	—	—	320P7W
	3p4w	125/250	420MI12W	*	420MF12W	*	420P12W
	3p4w	3Ø240	420MI9W	10	420MF9W	5	420P9W
	3p4w	3Ø480	420MI7W	20	420MF7W	10	420P7W
	3p4w	3Ø600	420MI5W	25	420MF5W	15	420P5W
	4p5w	3ØY120/208	520MI9W	10	—	—	520P9W
	4p5w	3ØY277/480	520MI7W	20	—	—	520P7W
	4p5w	3ØY347/600	520MI5W	25	—	—	520P5W
	30	2p3w	240	330MI6W	5	—	—
2p3w		480	330MI7W	10	—	—	330P7W
3p4w		125/250	430MI12W	*	430MF12W	*	430P12W
3p4w		3Ø240	430MI9W	10	430MF9W	7.5	430P9W
3p4w		3Ø480	430MI7W	20	430MF7W	15	430P7W
3p4w		3Ø600	430MI5W	25	430MF5W	20	430P5W
4p5w		3ØY120/208	530MI9W	10	—	—	530P9W
4p5w		3ØY277/480	530MI7W	20	530MF7W	15	530P7W
4p5w		3ØY347/600	530MI5W	25	530MF5W	20	530P5W



Portable Outlet Boxes

leviton.com/temporarypower

Description	Cable Diameter	Cat. No.	Cat. No.
		Black	Yellow
Std Depth, Pendant Style	0.230" - 0.546"	3059F-01E	3059F-01Y
Std Depth, Feed-Thru Style	0.230" - 0.546"	3059F-01E	3059F-01Y
Std Depth, Pendant Style	0.590" - 1.000"	3059F-02E	3059F-02Y
Std Depth, Feed-Thru Style	0.590" - 1.000"	3059F-02E	3059F-02Y
Extra Deep, Pendant Style	0.230" - 0.546"	3099F-01E	3099F-01Y
Extra Deep, Feed-Thru Style	0.230" - 0.546"	3099F-01E	3099F-01Y
Extra Deep, Pendant Style	0.590" - 1.000"	3099F-02E	3099F-02Y
Extra Deep, Feed-Thru Style	0.590" - 1.000"	3099F-02E	3099F-01Y



Portable Outlet Boxes Coverplates

leviton.com/temporarypower

Description	Color	Cat. No.
Coverplate, Single-Gang, Flip-Lid, GFCI/Decora®, Weather-Resistant	Black	3061-E
	Yellow	3061-Y
Coverplate, Standard, Single-Gang, Thermoplastic, Duplex Receptacle	Black	3051-E
	Yellow	3051-Y
Coverplate, Standard, Single-Gang, Thermoplastic, GFCI/Decora® Receptacles	Black	3060-E
	Yellow	3060-Y
Coverplate, Single-Gang, Flip-Lid, Duplex, Weather-Resistant	Black	3056-E
	Yellow	3056-Y



Thermoplastic Raintight While-In-Use Covers

leviton.com

Description	Mounting	Color	Cat. No.
Duplex Receptacle, Standard	Vertical	Grey	5976-GY
	Vertical	Clear	5976-CL
Decora/GFCI, Standard	Vertical	Grey	5977-GY
	Vertical	Clear	5977-CL
Decora/GFCI, Extra Deep	Vertical	Grey	5977-DGY
	Vertical	Clear	5977-DCL
Duplex Receptacle, Standard	Horizontal	Grey	5996-GY
	Horizontal	Clear	5996-CL
Decora/GFCI, Standard	Horizontal	Grey	5997-GY
	Horizontal	Clear	5997-CL



Pro Series Infrared Outdoor Motion Sensors

leviton.com/les

Description	Cat. No.	Rating	Coverage
Outdoor PIR Motion Sensor with Dual Floodlight Lampholder	PS200-7F	277VAC, 50/60Hz. 10A incandescent, 5A ballasts.	200°
Outdoor PIR Motion Sensor with Dual Floodlight Lampholder	PS200-4F	220-240VAC, 50/60Hz. 10A incandescent, 5A ballasts.	200°
Outdoor PIR Motion Sensor with Dual Floodlight Lampholder	PS110-7F	277VAC, 50/60Hz. 10A incandescent, 5A ballasts.	110°
Outdoor PIR Motion Sensor with Dual Floodlight Lampholder	PS110-4F	220-240VAC, 50/60Hz. 10A incandescent, 5A ballasts.	110°



On the following pages please find an abbreviated product listing with helpful ordering info. For comprehensive info and specs please visit leviton.com or speak to your leviton sales rep.

Mechanical Rooms and Parking Areas

Evr-Green™ Electric Vehicle Charging Stations

leviton.com/evrgreen

evr-green™ Level 2		evr-Green™ 160 Home Charging Station	
Description	Cat. No.	Description	Cat. No.
Level 2 Fleet Wall Mount Gateway Charging Station. Includes CDMA modem, ChargePass RFID reader, and 30A J1772 Connector with 18ft cable and holster. CDMA modem only for use in the United States.	CTVCN-S30	evr-green™160 Home Charging Station, 3.8kW output, cord-connected (plug-in)	EVB22-3PM
Level 2 Fleet Wall Mount Gateway Charging Station. Includes GPRS modem, ChargePass RFID reader, and 30A J1772 Connector with 18ft cable and holster. GPRS modem only for use in the United States.	CTVGN-S30	Pre-wire kit for EVB22	EVK02-M
Level 2 Fleet Wall Mount Gateway Charging Station. Includes GPRS modem (Canada only), ChargePass RFID reader, and 30A J1772 Connector with 18ft cable and holster. GPRS modem only for use in Canada.	CTVGN-SC3	evr-green™ 160 Home Charging Station, 3.8kW output (hard-wired)	EVB26-3PM
Level 2 Fleet Wall Mount Local Head Charging station. Includes Local Area Network communication, ChargePass RFID reader, and 30A J1772 Connector with 18ft cable and holster. This unit can only be installed after a Gateway Head Unit has been installed within line-of-sight.	CTVDN-S30	Level 2 Fleet Wall Mount Gateway Charging Station. Includes CDMA modem and 30A J1772Connector with 18ft cable and holster. This unit does not include an RFID reader. CDMA modem only for use in the United States.	CTVUN-S30



Food Service

SmartLockPRO Slim Series GFCI Receptacles

leviton.com/gfci

Description Rating	Color	Cat. No.		Cat. No.	
		15A-125V @ Receptacle 20A-125V Feed-Through		15A-125V @ Receptacle 20A-125V Feed-Through	
		TR	Non-TR	TR	Non-TR
Weather-Resistant/ Outdoor Grade GFCI with LED indicator Light	White	WT599-W	WR599-W	WT899-W	WR899-W
	Ivory	WT599-I	WT899-I	—	—
	Light Almd	WT599-T	—	WT899-T	—
	Grey	WT599-GY	—	WT899-GY	—
	Black	WT599-E	WR599-E	WT899-E	WR899-E



Wetguard® 5-15 & 5-20 Plugs and Connectors

leviton.com/wetguard

Rating Description	15A/125V Cat. No.	20A/125V Cat. No.	15A/125V Locking Cat. No.	20A/125V Locking Cat. No.
Plug	14W47	14W33	24W47	26W47
Connector	15W47	15W33	25W47	27W47
Single Outlet	90W47-S	90W33-S	95W47-S	97W47-S
Duplex Outlet	80W47-D	—	85W47-D	—
Single Inlet	59W47	59W33	64W47	66W47
Connector for Single Inlet	79W47	79W33	74W47	76W47



Dimensions® D4000 Series Lighting Controller

leviton.com/dimensions

Description	Cat. No.
120V, 4 Channels/Dimmers, Stand-Alone System	D4104-1LW
230V, 4 Channels/Dimmers, Stand-Alone System	D4104-2LW
120V, 6 Channels/Dimmers, Stand-Alone System	D4106-1LW
230V, 6 Channels/Dimmers, Stand-Alone System	D4106-2LW
Network Controller	D4200-00W
120V, 6 Channels/Dimmers, Net. Controller w/Dimmers	D4206-1LW
230V, 6 Channels/Dimmers, Net. Controller w/Dimmers	D4206-2LW



Dura-Port Industrial Connectivity

leviton.com/duraport

Description	Cat. No.
Industrial Outlet Kit, stainless steel, 1-port, single-gang	D670K-1S1
Industrial Outlet Kit, stainless steel, 2-port, single-gang	D670K-1S2
Industrial Outlet Kit, stainless steel, 2-port, dual-gang	D670K-2S2
Industrial Outlet Kit, stainless steel, 4-port, dual-gang	D670K-2S4



Smart Service – Sustainable Technology

Leviton Customer Services

Phone / Email Support

Leviton Corporate Customer Service 1-800-323-8920
Monday to Friday 8am – 7pm EST

- Fax: 1-800-832-9538
- Customerservice@leviton.com

Network Solutions Customer Service 1-800-722-2082
Monday to Friday 9am – 8pm EST

- Fax: 1-800-767-5270
 - insidesales@leviton.com
-

Leviton Technical Services

Phone / Email Support

Leviton Corporate Techline 1-800-824-3005
Monday to Friday 8am – 7pm EST info@leviton.com

- Network Solutions Techline 1-800-824-3005
Monday to Friday 9:30am – 8pm EST appeng@leviton.com
- Lighting and Energy Solutions Techline 1-800-959-6004,
Monday to Friday 9am- 8pm EST
meters@leviton.com / LEStechsupport@leviton.com

Live Chat

Communicate online with Leviton's technical service representatives about application and product-related questions.

- Corporate Technical Support –
Monday thru Friday 9am -7pm EST
- Network Solutions Technical Support –
Monday thru Friday 9:30am-8pm EST

Network Solutions AE Live Program

Take your technical support call to the next level and troubleshoot face-to-face with a Network Solutions professional.

Cross Reference Tool on www.leviton.com

Simply type the part number into the search box on the home page, matches will be displayed on the Manufacturer Cross Reference tab.

Online Knowledgebase: <http://Communities.leviton.com>

Obtain product related information from industry professionals and DIY homeowners on a wide range of products and services

Network Consultant Connection Program.
www.leviton.com/networkconsultant

Network solutions works closely with leading consultants worldwide to provide exclusive information and support..

Other Helpful Links

www.leviton.com/LESdesign - Save time and energy in the design process by utilizing our design tools and keep up to date with energy codes and mandates.

www.leviton.com/LESproducts - Find high-quality, cost effective, easy-to-implement lighting control solutions for any application.

www.leviton.com/LESquickpicks - Find all lighting and energy product documentation and software in one centralized location to make it easier to get the information you are looking for.

www.leviton.com/BIM - Incorporate Leviton connectivity images and added intelligence into your infrastructure design drawings with our library of free BIM objects.

www.leviton.com/HomeConfig - Get help designing your structured wiring network to serve today's connected lifestyles.

www.leviton.com/Configurator - Made To Order (MTO)

Leviton Manufacturing Co., Inc.

201 N Service Rd, Melville, NY 11747
Tel. 1-800-323-8920, FAX: 1-800-832-9538

Leviton Manufacturing of Canada, Ltd.

165 Hymus Blvd, Pointe-Claire, QC H9R 1E9
Tel. 1-800-469-7890, FAX: 1-800-563-1853

Leviton S. de R.L. de C.V.

Lago Tana 43, Col. Huichapan, Miguel Hidalgo, CP 11290 México DF.
Tel. (+52) 55-5082-1040, Fax: (+52) 55-5386-1797, www.leviton.com.mx

Visit our Website at: www.leviton.com

©2012 Leviton Manufacturing Co., Inc. All rights reserved. Subject to change without notice.

