

“Stay Connected” with



Bushings, Grommets, HEYcaps & Plugs

a PennEngineering® Company



Heyco® Double D Hole Plugs

For Mounting Holes with Flats

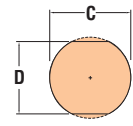
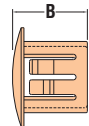
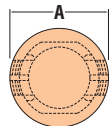
Multiple Locking Steps for Panel Thickness up to .125" (3,2 mm)

| PANEL DIMENSIONS | | | | PART NO. | | DESCRIPTION | PART DIMENSIONS | | | |
|--------------------|------|---------------------|------|-------------|-------------|----------------|-----------------|------|-----|------|
| D | | C | | Black | White | | A | | B | |
| Mounting Hole Dia. | | To Prevent Rotation | | | | Head Diameter | Overall Height | | | |
| in. | mm. | in. | mm. | | | in. | mm. | in. | mm. | |
| .375 | 9,5 | .345 | 8,8 | 2617 | 2618 | DP 375* | .47 | 11,9 | | |
| .437 | 11,1 | .390 | 9,9 | 2488 | 2489 | DD 437-390 | .53 | 13,5 | | |
| .500 | 12,7 | .445 | 11,3 | 2491 | 2492 | DD 500-445 | .55 | 14,7 | .41 | 10,3 |
| .562 | 14,3 | .530 | 13,5 | 2494 | 2495 | DD 562-530 | .66 | 16,7 | | |
| .625 | 15,9 | .550 | 14,0 | 2497 | 2498 | DD 625-550 | .73 | 18,5 | | |
| .750 | 19,1 | .625 | 15,9 | 2503 | 2504 | DD 750-625 | .92 | 23,4 | | |
| .875 | 22,2 | .770 | 19,5 | 2509 | 2510 | DD 875-770 | 1.02 | 25,8 | | |
| | | | | 2511 | - | DD 875-770-9** | .94 | 23,8 | .45 | 11,5 |
| 1.109 | 28,2 | 1.000 | 25,4 | 2717 | 2718 | DD 1109-1000 | 1.22 | 30,9 | | |
| 2.000 | 50,8 | 1.875 | 47,6 | 2959 | 2963 | DD 2000-1875 | 2.17 | 55,1 | .48 | 12,1 |

Standard colors black and white. Consult Heyco for other colors.

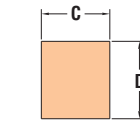
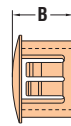
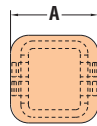
*On installation, DP 375 Locking Fingers must be aligned with Mounting Hole Flats.

**Smaller than standard Head Diameter, for clearance situations.



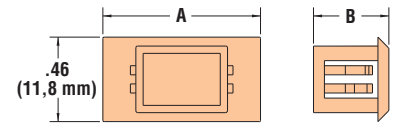
MOUNTING HOLE

DD Series



MOUNTING HOLE

RP Series



3299, 3388, 3389

Heyco® Rectangular Blanking & Connector Port Plugs

Multiple Locking Steps for Various Panel Thicknesses

| Maximum Thickness | PANEL DIMENSIONS | | | | PART NO. | DESCRIPTION | PART DIMENSIONS | | | | |
|----------------------------|------------------|------|------|------|----------|--------------|-----------------|-------------|-------------|-----|------|
| | Mounting Hole | | C | | | | Black | A | | B | |
| in. | mm. | in. | mm. | in. | mm. | | in. | mm. | in. | mm. | |
| Rectangular Blanking Plugs | | | | | | | | | | | |
| .025 | 0,64 | .964 | 24,5 | .964 | 24,5 | 13910 | RP 245-245 | 1.06 x 1.06 | 26,9 x 26,9 | | |
| | | | | | | 13911 | RB 245-245* | 1.05 x 1.05 | 26,7 x 26,7 | .30 | 7,6 |
| .04 | 1,0 | .27 | 6,9 | .29 | 7,4 | 2512 | RP 69-74 | .37 x .37 | 9,4 x 9,4 | .33 | 8,4 |
| .10 | 2,5 | .45 | 11,5 | .51 | 13,9 | 1890 | RP 115-130 | .58 x .58 | 14,7 x 14,7 | .40 | 10,2 |
| .16 | 4,0 | .69 | 17,5 | .69 | 17,5 | 1892 | RP 175-175 | .83 x .83 | 21,1 x 21,1 | .47 | 11,9 |

Connector Port Plugs

| | | | | | | | | | | | |
|-----|-----|-----|-----|------|------|-------------|-------------|------|------|-----|------|
| .14 | 3,5 | .37 | 9,5 | .51 | 13,0 | 3299 | RP 95-130-1 | .63 | 16,0 | .41 | 10,5 |
| | | | | 1.02 | 26,0 | 3388 | RP 95-130 | .87 | 22,0 | | |
| | | | | | | 3389 | RP 95-260 | 1.38 | 35,0 | | |

Standard color black.

*Bushing version of the above plug.

- Blank unused rectangular panel holes.
- **PN 1890** - UR Recognized under the Component Program of Underwriters' Laboratories File E15331.
- **PN 1892** - UR Recognized under the Component Program of Underwriters' Laboratories File E51579 and CSA Certified by the Canadian Standards Association File 8919.

| | |
|---------------------|--|
| Material | Nylon 6/6 |
| Certifications | Recognized under the Component Program of Underwriter Laboratories File E51579 (DD only) |
| Flammability Rating | 94V-2 |
| Temperature Range | -40°F (-40°C) to 221°F (105°C) |

Quick Specs