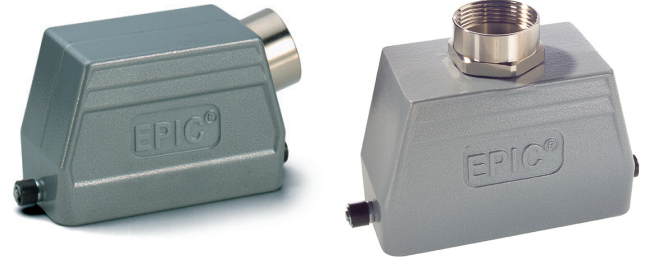
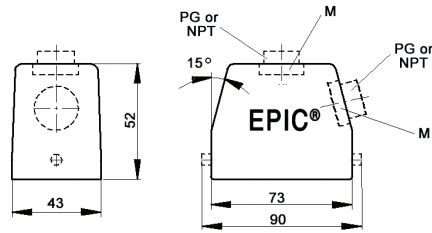


EPIC® HB 10 Standard Hoods

Single Lever Bolts



all dimensions are in mm.

Technical Data					
Specifications:	DIN 43652	IP Protection Class:	NEMA 4, NEMA 12, IP65		
Temperature Range:	-40°C to + 125°C	Material:	Powder-coated aluminum alloy		

Size of Entry	PG	NPT	Metric	PG	Part Number	NPT	Metric	Complete the Installation: SKINTOP® Strain Relief			
								PG Plastic	PG Metal	Metric Plastic	Metric Metal
Top Entry											
16	1/2"	20		100409	100409NP	19040900*		53015040	52015740	53111020	53112020
21	3/4"	25		100407	100407NP	19040700*		53015050	52015750	53111030	53112030
Side Entry											
16	1/2"	20		100429	100429NP	19042900		53015040	52015740	53111020	53112020
21	3/4"	25		100428	100428NP	19042800		53015050	52015750	53111030	53112030

* Metric top-entry hoods do not come with a neck.

Approvals

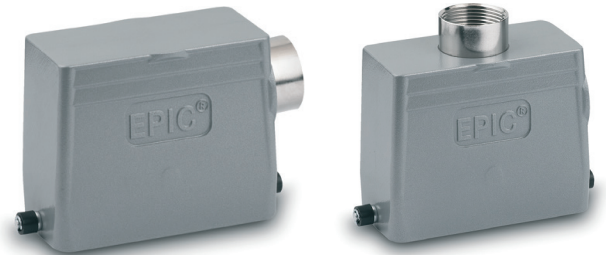
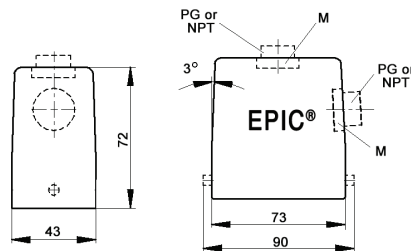


Complete the Installation

HB Dust Covers
page 419

EPIC® HB 10 High Profile Hoods

Single Lever Bolts



all dimensions are in mm.

Technical Data					
Specifications:	DIN 43652	IP Protection Class:	NEMA 4, NEMA 12, IP65		
Temperature Range:	-40°C to + 125°C	Material:	Powder-coated aluminum alloy		

Size of Entry	PG	NPT	Metric	PG	Part Number	NPT	Metric*	Complete the Installation: SKINTOP® Strain Relief			
								PG Plastic	PG Metal	Metric Plastic	Metric Metal
Top Entry											
21	3/4"	25		700442	700442NP	79044200		53015050	52015750	53111030	53112030
29	1"	32		700444	700444NP	79044400		53015060	52015760	53111040	53112040
Side Entry											
21	3/4"	25		700542	700542NP	79054200		53015050	52015750	53111030	53112030
29	1"	32		700544	700544NP	79054400		53015060	52015760	53111040	53112040

* Metric hoods do not come with a neck.

Approvals



Complete the Installation

HB Dust Covers
page 419

Photographs are not to scale and are not true representations of the products in question.
If not otherwise specified, all values relating to the product are nominal values. For current information go to our website.