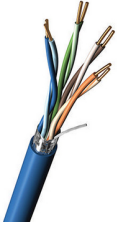


Part Number: 7936A

DataTuff® Cat 5e, (4 pr) 24 AWG Solid BC, PO/LSZH, Foil Shld, CM



Product Description

Four Cat 5e 24 AWG Bonded-Pairs solid bare copper conductors, polyolefin insulation, overall Beldfoil® shield (100% coverage), low smoke zero halogen jacket.

Technical Specifications

Physical Characteristics (Overall)

Conductor

AWG	Stranding	Material	No. of Pairs
24	Solid	BC - Bare Copper	4

Conductor Count:	8
Total Number of Pairs:	4
Conductor Size:	24 AWG

Insulation

Material	Nominal Wall Thickness
PO - Polyolefin	0.01 in

Color Chart

Number	Color
1	White/Blue Stripe & Blue
2	White/Orange Stripe & Orange
3	White/Green Stripe & Green
4	White/Brown Stripe & Brown

Outer Shield Material

Type	Material	Material Trade Name	Coverage [%]	Drainwire Material	Drainwire AWG	Drainwire Construction n x D
Tape	Aluminum Foil-Polyester Tape	Beldfoil®	100 %	TC - Tinned Copper	24	7x32 mm

Outer Jacket Material

Material	Nominal Diameter	Ripcord
LSZH - Low Smoke Zero Halogen	0.265 in	No

Electrical Characteristics

Conductor DCR

Max. Conductor DCR	Max. DCR Unbalance
9.38 Ohm/1000ft	3 %

Capacitance

Max. Capacitance Unbalance	Nom. Mutual Capacitance
330 pF/ft	15 pF/ft

Shielding:	F/UTP - Overall Foil
------------	----------------------

Delay

Max. Delay	Max. Delay Skew	Nominal Velocity of Propagation (VP) [%]
538 ns/100m	45 ns/100m	70 %

High Freq

Frequency [MHz]	Max. Insertion Loss (Attenuation)	Min. NEXT [dB]	Min. PSNEXT [dB]	Min. ACR [dB]	Min. PSACR [dB]	Min. ACRF (ELFEXT) [dB]	Min. PSACRF (PSELFEXT) [dB]	Min. RL (Return Loss) [dB]	Min. SRL (Structural Return Loss)	Max./Min. Input Impedance (unFitted)
1 MHz	2 dB/100m	65.3 dB	62.3 dB	63 dB	60 dB	63.8 dB	60.8 dB	20 dB	23 dB	100 ± 15 Ohm
4 MHz	4.1 dB/100m	56.3 dB	53.3 dB	51 dB	49 dB	51.7 dB	48.7 dB	23 dB	23 dB	100 ± 15 Ohm
8 MHz	5.8 dB/100m	51.8 dB	48.8 dB	46 dB	43 dB	45.7 dB	42.7 dB	24.5 dB	24.5 dB	100 ± 15 Ohm
10 MHz	6.5 dB/100m	50.3 dB	47.3 dB	43 dB	41 dB	43.8 dB	40.8 dB	25 dB	25 dB	100 ± 15 Ohm
16 MHz	8.2 dB/100m	47.3 dB	44.3 dB	39 dB	36 dB	39.7 dB	36.7 dB	25 dB	25 dB	100 ± 15 Ohm
20 MHz	9.3 dB/100m	45.8 dB	42.8 dB	36.5 dB	33.5 dB	37.7 dB	34.7 dB	25 dB	25 dB	100 ± 15 Ohm
25 MHz	10.4 dB/100m	44.3 dB	41.3 dB	33.9 dB	30.9 dB	35.8 dB	32.8 dB	24.3 dB	24.3 dB	100 ± 15 Ohm
31.25 MHz	11.7 dB/100m	42.9 dB	39.9 dB	31 dB	28 dB	33.9 dB	30.9 dB	23.6 dB	23.6 dB	100 ± 15 Ohm
62.5 MHz	17 dB/100m	38.4 dB	35.4 dB	22 dB	19 dB	27.8 dB	24.8 dB	21.5 dB	21.5 dB	100 ± 15 Ohm
100 MHz	22 dB/100m	35.3 dB	32.3 dB	14 dB	11 dB	23.8 dB	20.8 dB	20.1 dB	20.1 dB	100 ± 15 Ohm
200 MHz	32.4 dB/100m		27.8 dB		1 dB		14.7 dB		15 dB	100 ± 25 Ohm
1 MHz										
4 MHz										
8 MHz										
10 MHz										
16 MHz										
20 MHz										
25 MHz										
31.25 MHz										
62.5 MHz										
100 MHz										
200 MHz										

Voltage

UL Voltage Rating
300 V RMS

Temperature Range

Installation Temp Range:	+5°C To +75°C
UL Temp Rating:	60°C
Storage Temp Range:	-10°C To +75°C
Operating Temp Range:	-10°C To +75°C

Mechanical Characteristics

Bulk Cable Weight:	34 lbs/1000ft
Max Recommended Pulling Tension:	40 lbs
Min Bend Radius/Minor Axis:	0.5 in

Standards

NEC/(UL) Specification:	CM, UL444
CEC/C(UL) Specification:	CMG
ISO/IEC Compliance:	ISO/IEC 11801 Cat 5e
CPR Euroclass:	Eca
Data Category:	Category 5e
Telecommunications Standards:	TIA-5687-C.2 Category 5e, NMEA WC-63.1
Third Party Performance Verification:	UL Verified to Category 5e

Applicable Environmental and Other Programs

EU Directive 2000/53/EC (ELV):	Yes
EU Directive 2003/11/EC (BFR):	Yes
EU Directive 2011/65/EU (ROHS II):	Yes
EU Directive 2012/19/EU (WEEE):	Yes
EU Directive 2015/863/EU:	Yes
EU Directive Compliance:	EU Directive 2003/11/EC (BFR)
EU CE Mark:	Yes
EU RoHS Compliance Date (yyyy-mm-dd):	2004-01-04
CA Prop 65 (CJ for Wire & Cable):	Yes

MII Order #39 (China RoHS):	Yes
-----------------------------	-----

Suitability

Suitability - Oil Resistance:	No
Suitability - Outdoor:	Yes
Suitability - Sunlight Resistance:	Yes

Flammability, LSOH, Toxicity Testing

UL Flammability:	UL1685 UL Loading
CSA Flammability:	FT4
UL voltage rating:	300 V RMS

Plenum/Non-Plenum

Plenum (Y/N):	No
---------------	----

Part Number

Variants

Item #	Color	Footnote
7936A 0101000	Black	C
7936A 0102000	Black	C

Footnote:	C - CRATE REEL PUT-UP.
Patent:	http://www.belden.com/p

© 2018 Belden, Inc

All Rights Reserved.

Although Belden makes every reasonable effort to ensure their accuracy at the time of this publication, information and specifications described here in are subject to error or omission and to change without notice, and the listing of such information and specifications does not ensure product availability.

Belden provides the information and specifications herein on an "ASIS" basis, with no representations or warranties, whether express, statutory or implied. In no event will Belden be liable for any damages (including consequential, indirect, incidental, special, punitive, or exemplary damages) whatsoever, even if Belden has been advised of the possibility of such damages, whether in an action under contract, negligence or any other theory, arising out of or in connection with the use, or inability to use, the information or specifications described herein.

All sales of Belden products are subject to Belden's standard terms and conditions of sale.

Belden believes this product to be in compliance with all applicable environmental programs as listed in the data sheet. The information provided is correct to the best of Belden's knowledge, information and belief at the date of its publication. This information is designed only as a general guide for the safe handling, storage, and any other operation of the product itself or the one that it becomes a part of. The Product Disclosure is not to be considered a warranty or quality specification. Regulatory information is for guidance purposes only. Product users are responsible for determining the applicability of legislation and regulations based on their individual usage of the product.