

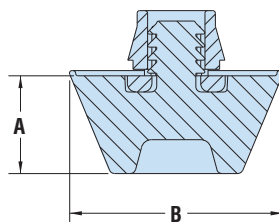


## Heyco® Feet of Strength Feet with Snap-In Locking Fingers

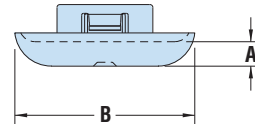
- **Snap-in design** eliminates the installation labor needed for a screw or a rivet saving assembly time and equipment.
- Superior mounting approach as the Snap-In Bumper mounts securely into the panel while providing a strong mechanical support to the bumper when used as a mounting foot for electronic enclosures.
- Superior hold versus adhesive backed or screw/rivet bumpers.
- Designed to fit snugly into panel and is dust tight.
- Snap-In Bumpers are skid and scratch resistant and will not mark or stain surfaces.
- Lock firmly into enclosure.
- Quick and easy installation.
- Suitable for metal or plastic panels.
- Bumper constructed of EPDM rubber.
- Part Description Key: FSSI XX-YY-ZZ where XX = Overall Height (inches), YY = Mounting Hole Diameter (inches) and ZZ = Maximum Panel Thickness (inches)

PART DIMENSIONS				PANEL DIMENSIONS				PART NO. Black	DESCRIPTION		
A Overall Height	B Top Diameter		Mounting Hole Diameter	Thickness Range		Minimum	Maximum				
in.   mm.	in.   mm.	in.   mm.	in.   mm.	in.   mm.	in.   mm.			in.   mm.			
<b>FSSI Series</b>											
.19	4,7	.812	20,6	.312	7,9	.03	0,8	.06	1,6	<b>G3016</b>	FSSI 19-31-06
.25	6,3	.812	20,6	.312	7,9	.03	0,8	.06	1,6	<b>G3017</b>	FSSI 25-31-06
.38	9,5	.812	20,6	.312	7,9	.03	0,8	.06	1,6	<b>G3018</b>	FSSI 38-31-06

Standard color black.



Snap-In



Low Profile Snap-In

## Low Profile Feet with Snap-In Locking Fingers

- **The low profile snap-in design** requires no screws or adhesives to securely mount into a metal or plastic base.
- The TPE top provides a durable, non-skid surface.
- Snap-In Feet ensure a liquid tight seal and can be used for indoor or outdoor applications.
- Part Description Key: LTBP XXX-YYY where XXX = Mounting Hole Diameter (inches) and YYY = Maximum Panel Thickness (inches)



PART DIMENSIONS				PANEL DIMENSIONS				PART NO. Black	DESCRIPTION		
A Overall Height	B Top Diameter		Mounting Hole Diameter	Thickness Range		Minimum	Maximum				
in.   mm.	in.   mm.	in.   mm.	in.   mm.	in.   mm.	in.   mm.			in.   mm.			
<b>LTBP Series</b>											
.13	3,2	.55	14,0	.500	12,7	.02	0,5	.06	1,6	<b>C2008</b>	LTBP 500-063
						.06	1,6	.25	6,4	<b>C2058</b>	LTBP 500-250
		.66	16,8	.625	15,9	.02	0,5	.06	1,6	<b>C2012</b>	LTBP 625-063
						.06	1,6	.25	6,4	<b>C2062</b>	LTBP 625-250
		.78	19,8	.750	19,1	.02	0,5	.06	1,6	<b>C2016</b>	LTBP 750-063
						.06	1,6	.25	6,4	<b>C2066</b>	LTBP 750-250
		.90	22,9	.875	22,2	.02	0,5	.06	1,6	<b>C2020</b>	LTBP 875-063
						.06	1,6	.25	6,4	<b>C2070</b>	LTBP 875-250
		1.05	26,7	1.000	25,4	.02	0,5	.06	1,6	<b>C2022</b>	LTBP 1000-063
						.06	1,6	.25	6,4	<b>C2072</b>	LTBP 1000-250
		1.16	29,5	1.093	27,8	.02	0,5	.06	1,6	<b>C2024</b>	LTBP 1093-063
						.06	1,6	.25	6,4	<b>C2074</b>	LTBP 1093-250

Standard color black.

*Quick Specs*

Material	<b>FSSI Series:</b> EPDM Rubber insert, Nylon 6/6 body <b>LTBP Series:</b> Nylon 6/6 and TPE co-molding
Flammability Rating	HB
Temperature Range	-40°F (-40°C) to 221°F (105°C)
IP Rating	IP 67/68 (LTBP only)