

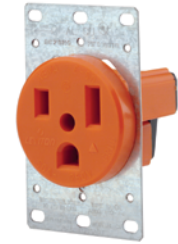
50A Single Receptacles and Plugs

Rating	50A-125V 50A-125V		
NEMA			
	5-50R	5-50P	
Description	Cat. No.	Cat. No.	Wallplate Information
Flush Mount Receptacle	5373	—	Fits all wallplates with 2.15" diameter center hole
Angle Plug	—	9550-P	



5373

Rating	50A-250V 50A-250V		
NEMA			
	6-50R	6-50P	
Description	Cat. No.	Cat. No.	Wallplate Information
Flush Mount Receptacle	5374	—	Fits all wallplates with 2.15" diameter center hole
Flush Mount Receptacle, Isolated Ground	5374-IG	—	Fits all wallplates with 2.15" diameter center hole
Surface Mount Receptacle	5378	—	Fits all wallplates with 2.15" diameter center hole
Angle Plug	—	9650-P	



5374-IG

Rating	50A-277V 50A-277V		
NEMA			
	7-50R	7-50P	
Description	Cat. No.	Cat. No.	Wallplate Information
Flush Mount Receptacle	9750-A	—	Fits all wallplates with 2.15" diameter center hole
Angle Plug	—	9750-P	



9750-A

3-Pole, 3-Wire, Non-Grounding

Rating	30A-125/250V		
NEMA			
	10-30R	10-30P	
Description	Cat. No.	Cat. No.	Wallplate Information
Flush Mount Receptacle	5207	—	Fits all wallplates with 2.15" diameter center hole
Surface Mount Receptacle	5054	—	Fits all wallplates with 2.15" diameter center hole
Angle Plug	—	9332-P	



5206

Rating	50A-125/250V		
NEMA			
	10-50R	10-50P	
Description	Cat. No.	Cat. No.	Wallplate Information
Flush Mount Receptacle	5206	—	Fits all wallplates with 2.15" diameter center hole
Surface Mount Receptacle	5050	—	Fits all wallplates with 2.15" diameter center hole
Angle Plug	—	9450-P	



9450-P