

TempGuard external hinged connector interfaces Deutsch - DT Series



Deutsch - DT Series
High Temperature Straight &
90° Elbow Swivel Interface

Deutsch - DT Series Interface - High Temperature External Hinged Connector Interface

Single junction straight and 90° elbow fittings providing high integrity connections between Deutsch DT connectors and Harnessflex conduit systems. In addition, 90° elbow versions allow the conduit to swivel 360° around the connector housing, sufficient to avoid the problems associated with one-piece interfaces of overflexing due to movement or vibration.

Part No.	Conduit Size		Nominal Dimensions				Interface Reference	Connector Reference
	NC	NW	A	B	C	D		
Deutsch - DT Series Straight Interface								
CIH08-DT2	08	7.5	26.0mm	16.0mm	18.0mm	7.0mm	2 Way	DT06-2S*
CIH08-DT3	08	7.5	30.0mm	22.0mm	24.0mm	12.0mm	3 Way	DT06-3S*
CIH08-DT4	08	7.5	42.0mm	18.0mm	27.0mm	12.0mm	4 Way	DT06-4S*
CIH12-DT2	12	10	26.0mm	16.0mm	18.0mm	7.0mm	2 Way	DT06-2S*
CIH12-DT3	12	10	29.0mm	22.0mm	24.0mm	7.0mm	3 Way	DT06-3S*
CIH12-DT4	12	10	40.0mm	18.0mm	27.0mm	7.0mm	4 Way	DT06-4S*
CIH12-DT6	12	10	40.0mm	22.0mm	27.0mm	10.0mm	6 Way	DT06-6S*
CIH12-DT8	12	10	40.0mm	25.0mm	30.0mm	10.0mm	8 Way	DT06-8S*
CIH08-DT6*	08	7.5	42.0mm	22.0mm	27.0mm	12.0mm	6 Way	
CIH16-DT12*	16	13	44.0mm	24.0mm	40.0mm	10.0mm	12 Way	

Part No.	Conduit Size		Nominal Dimensions				Interface Reference	Connector Reference
	NC	NW	A	B	C	D		
Deutsch - DT Series 90° Elbow Swivel Interface								
CIH08-90-DT2	08	7.5	36.0mm	30.0mm	19.0mm	7.0mm	2 Way	DT06-2S*
CIH08-90-DT4	08	7.5	48.0mm	30.0mm	25.0mm	7.0mm	4 Way	DT06-4S*
CIH12-90-DT2	12	10	36.0mm	30.0mm	19.0mm	7.0mm	2 Way	DT06-2S*
CIH08-90-DT3*	08	7.5	44.0mm	30.0mm	23.0mm	7.0mm	3 Way	
CIH08-90-DT6*	08	7.5	48.0mm	34.0mm	25.0mm	7.0mm	6 Way	
CIH12-90-DT3*	12	10	44.0mm	30.0mm	23.0mm	7.0mm	3 Way	
CIH12-90-DT4*	12	10	48.0mm	34.0mm	25.0mm	7.0mm	4 Way	
CIH12-90-DT6*	12	10	44.0mm	30.0mm	23.0mm	7.0mm	6 Way	
CIH12-90-DT8*	12	10	63.0mm	37.0mm	30.0mm	10.0mm	8 Way	
CIH12-90-DT12*	12	10	68.0mm	36.0mm	38.0mm	10.0mm	12 Way	
CIH16-90-DT8*	16	13	63.0mm	37.0mm	30.0mm	10.0mm	8 Way	
CIH16-90-DT12*	16	13	68.0mm	36.0mm	38.0mm	10.0mm	12 Way	

*Made to order - Part numbers listed are available to order but not stocked items, and would therefore be subject to manufacturing leadtime



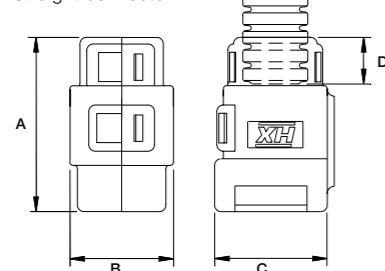
Approvals

CE Mark to the Low Voltage Directive
RoHS Compliant to 2011/65/EU
Conforms with **End of Life Vehicle directive (ELV) EU200/53/EC**

IP Rating	Appropriate Conduit	Fire Performance	Temperature Range
For use with: All conduits in the Harnessflex range			
IP40	Yes	Self Extinguishing	-40°C to +200°C
IP67	N/A	Low Smoke Toxicity	
IP68	N/A	Halogen Free	UV Resistance
		UL94 V2 / UL94 RTI 150 (Elec)	High

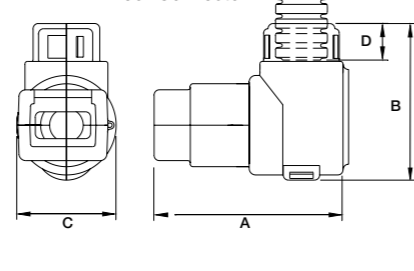
Dimensions

Straight connector



Dimensions

90° Connector



TempGuard external hinged connector interfaces FCI Automotive Apex



FCI Automotive Apex
High Temperature Straight &
90° Elbow Swivel Interface

FCI Automotive Apex Interface - High Temperature External Hinged Connector Interface

A range of straight and 90° elbow fittings offering a compact and high integrity, high temperature connection protection between FCI Apex automotive connectors or junior timer connectors and Harnessflex conduit systems in elevated temperature areas. These interfaces provide complete cable protection right up to the connector. They also provide strain relief and protection from high pressure washing, helping to maintain the sealing integrity of the connector.

Part No.	Conduit Size (A)		Nominal Dimensions			
	NC	NW	B	C	D	E
FCI Automotive Apex Straight Interface						
CIH08-FCI02	08	7.5	25.0mm	17.0mm	33.0mm	12.0mm
CIH08-FCI03	08	7.5	34.0mm	17.0mm	34.0mm	12.0mm
CIH08-FCI04	08	7.5	39.0mm	17.0mm	34.0mm	12.0mm
CIH12-FCI02	12	10	25.0mm	17.0mm	27.0mm	7.0mm
CIH12-FCI03	12	10	35.0mm	17.0mm	29.0mm	7.0mm
CIH12-FCI04	12	10	38.0mm	17.0mm	29.0mm	7.0mm
CIH12-FCI14	12	10	53.0mm	26.0mm	34.0mm	10.0mm
CIH16-FCI14*	-	-	53.0mm	26.0mm	34.0mm	n/a
CIH17-FCI10*	17	14	39.2mm	25.5mm	44mm	10.6mm

Part No.	Conduit Size (A)		Nominal Dimensions			
	NC	NW	B	C	D	E
FCI Automotive Apex 90° Elbow Swivel Interface						
CIH08-90-FCI02	08	7.5	31.0mm	19.0mm	48.0mm	10.0mm
CIH08-90-FCI03	08	7.5	35.0mm	19.0mm	49.0mm	10.0mm
CIH12-90-FCI02	12	10	32.0mm	19.0mm	48.0mm	10.0mm
CIH08-90-FCS02*	08	7.5	30.0mm	19.0mm	33.0mm	10.0mm
CIH08-90-FCI04*	08	7.5	38.0mm	19.0mm	49.0mm	10.0mm
CIH12-90-FCI03*	12	10	37.0mm	19.0mm	49.0mm	10.0mm
CIH12-90-FCI04*	12	10	38.0mm	19.0mm	49.0mm	10.0mm
CIH08-90-FCI14*	08	7.5	38.0mm	24.0mm	57.0mm	10.0mm
CIH12-90-FCI14*	12	10	38.0mm	24.0mm	57.0mm	10.0mm
CIH16-90-FCI14*	16	13	38.0mm	24.0mm	57.0mm	10.0mm

*Made to order - Part numbers listed are available to order but not stocked items, and would therefore be subject to manufacturing leadtime



Approvals

CE Mark to the Low Voltage Directive
RoHS Compliant to 2011/65/EU
Conforms with **End of Life Vehicle directive (ELV) EU200/53/EC**

IP Rating	Appropriate Conduit	Fire Performance	Temperature Range
For use with: All conduits in the Harnessflex range			
IP40	Yes	Self Extinguishing	-40°C to +200°C
IP67	N/A	Low Smoke Toxicity	
IP68	N/A	Halogen Free	UV Resistance
		UL94 V2 / UL94 RTI 150 (Elec)	High

Dimensions

