

Sealed fittings Circular UNEF connector interfaces



Circular UNEF Connector Interface Sealed Fitting

Circular UNEF Connector Interfaces - Sealed Fittings

Straight compression type fittings providing connection between UNEF style circular connections and conduit systems. These fittings are designed for use with all types of unslit Harnessflex conduit, maintaining maximum conduit bore.

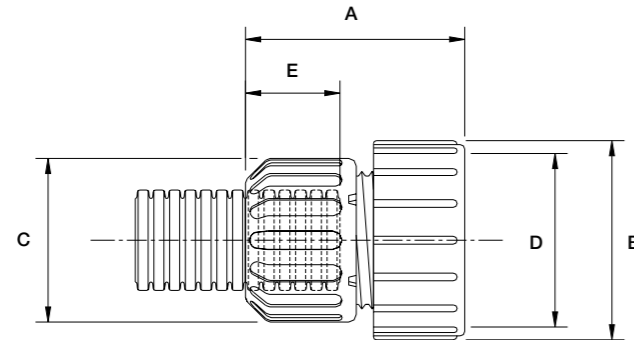
Interface Body Part No.	Cap Nut	Sealing Bush	Face Sealing Washer	Conduit Size		Thread Size
				NC	NW	
MPA01	CN07	SRN07	SWPG07	10	8.5	5/8"-24 UNEF
MPA01	CN09	SRN09	SWPG07	12	10	5/8"-24 UNEF
MPA03	CN16	SRN16	SWM20	20	17	1"-20 UNEF
MPA04	CN16	SRN16	SWPG16	20	17	13/16"-18 UNEF
MPA08	CN07	SRN07	SWPG09	10	8.5	3/4"-20 UNEF
MPA08	CN09	SRN09	SWPG09	12	10	3/4"-20 UNEF

NOTE: Order interface bodies, cap nuts, sealing bushes and sealing washers separately
Specials available upon request, please contact our technical team for further details

Interface Body Part No.	Nominal Dimensions			Thread Size D	E
	A	B	C		
MPA01	30mm	24mm	23mm	5/8"-24 UNEF	17mm
MPA03	33mm	36mm	31mm	1"-20 UNEF	20mm
MPA04	32mm	37mm	31mm	13/16"-18 UNEF	20mm
MPA08	30mm	32mm	23mm	3/4"-20 UNEF	17mm

*NOTE: Dimensions refer to overall assembly

Dimensions



Sealed fittings Solenoid connector interfaces



Solenoid Connector Interfaces Sealed Fittings

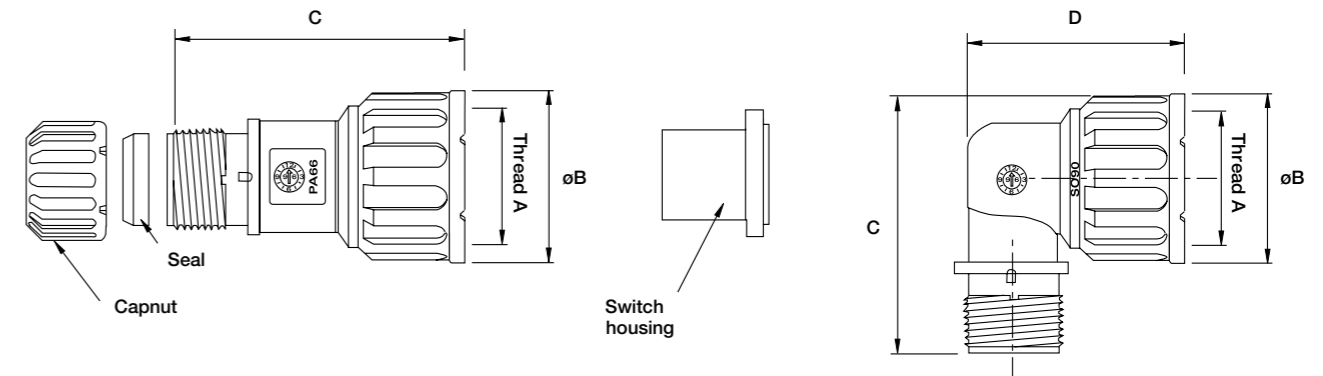
Solenoid Connector Interfaces - Sealed Fittings

Screw-thread straight and elbow connectable interfaces for circular solenoids, sensors and switches. These fittings are designed for use with all types of unslit Harnessflex conduit, maintaining maximum conduit bore.

Elbow Fitting Part No.	Thread A	Nominal Dimensions			Nut Colour
		B	C	D	
SC-M24-90	M24 x 1.0mm	31.3mm	8.5mm	40.5mm	Black
SC-M27-90	M27 x 1.0mm	34.0mm	40.4mm	0.5mm	Grey

Straight Fitting Part No.	Thread A	Nominal Dimensions			Nut Colour
		B	C	D	
SC-M24-S	M24 x 1.0mm	31mm	53mm	-	Black
SC-M27-S	M27 x 1.0mm	34mm	54mm	-	Grey

Dimensions



RSG Housing - Sealed Fittings

Part No.	Suitable for Connector Type	Number of Pins	Nominal Dimensions			
			A	B	C	D
RSG02	M27	2	25.0mm	3.5mm	18.7mm	23mm
RSG03	M27	3	25.3mm	3.5mm	18.0mm	21mm
RSG04	M27	4	25.3mm	3.5mm	18.7mm	23mm
RSG05	M24	2	22.5mm	3.5mm	18.0mm	23mm
RSG06	M24	3	22.3mm	3.5mm	18.0mm	21mm

Dimensions

