

RSH Series Custom Face Rackmounts

The Professional's Choice for Mounting and Trimming Non-Rackmount Components



Installation by Intra-Home Systems



EIA/TIA Compliant



Spec. #
96-034
for full
product
info.
ABE
(Component)

Spec. #
96-999
for full
product
info.
ABE
(LCD)

With the innovative RSH custom rackmounts, virtually any component can be installed in a standard 19" enclosure without modification.

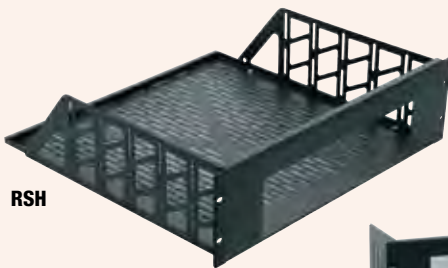
Custom cut to provide a perfect opening for the face of the component that is being mounted, each RSH unit provides a neatly-trimmed installation with a perfect fit and no gaps. With accurate details on over 9,500 components in our measured unit database, chances are we have the component needed on file.

Unit assembles easily in minutes and includes rear brackets to prevent the mounted component from sliding back. Fully ventilated ears and bottom promote cooling. Depending on the needs of the installation, the units can be ordered with a black textured finish (model RSH4S) or a black brushed and anodized finish (model RSH4A). Bottom depths are automatically provided in 11-1/2", 14", 15-1/2", 17-1/2", or 20-1/2" styles. Custom rackmounts will accept any component up to 17-3/4" wide. Individual custom faces (less rack ears and shelf bottom) are also available in a black textured finish (model SFACE) or a black brushed and anodized finish (model AFACE). LCD rackmounts also available to mount most LCD monitors with up to a 17" screen size or with a maximum width of 17-3/8".

NOTE: custom rackshelf height is specified at the factory based on physical restrictions. Visit middleatlantic.com to find heights on all measured components, or design the system in RackTools® or Visio® Blocks, which are both updated regularly with the latest components.

RSH Series Custom Face Rackmounts

Part# & Finish	Matching Finish	Pg.
RSH4A black brushed and anodized	QFP Quiet Fan Panels	121
	FP Fan Panels	121
	TA Trim Strip	147
	Media Holders (CD, CD-1, DVD)	147
	D Series Rack Drawers	148
	VTP, EVTA Ventilation Panels	166
	BL, HBL Blank Panels	167
RSH4S black textured powder coat	QTFP Quiet Fan Panels	121
	TFP Fan Panels	121
	TS Trim Strip	147
	Media Holders (TCD)	147
	TD Series Rack Drawers	148
	VT, EVT Ventilation Panels (flat)	166
	SB Blank Panels	167



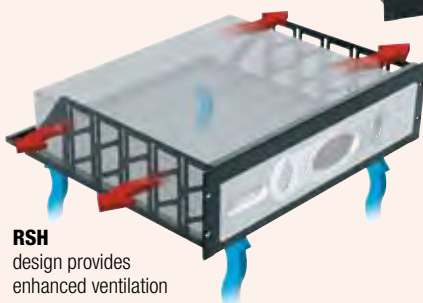
RSH



See pg. 146 for custom rackshelves for media docks



RSH
LCD mounts



RSH
design provides
enhanced ventilation



PD-815SC-PBSH
rear mount power
option available



Click for quick access to measured unit database



Database now includes iPad® docks.



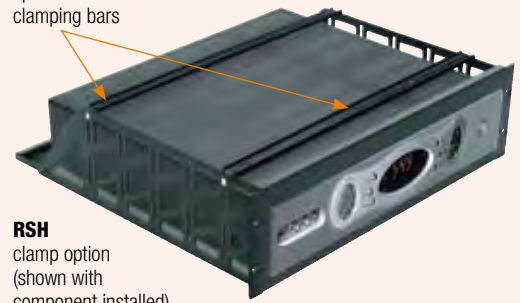
RSH Clamp Options

When dealing with mobile applications, seismic issues, or for transporting the finished system to the job site, use the RSH clamp option to secure components to the shelf. Clamping bars have rubber bumpers to maintain a tight grip while keeping components scratch-free.

Part #	Finish
RSH4A	black brushed and anodized custom rackshelf
RSH4S	black textured powder coat custom rackshelf
-C	clamp kit

Part #	Finish
AFACE	black anodized face plate only
SFACE	black textured face plate only

-C
optional
clamping bars



RSH
clamp option
(shown with
component installed)

Installation by Intra Home Systems



RSH Series Custom Face Rackmounts

Ordering Instructions

Visit middleatlantic.com to see if the dimensions for the component to be rackmounted already exist among the over 9,500 on file. If we don't have the dimensions, we strongly suggest that you insure the component and ship it to us via UPS so that we may accurately measure it. We will ship the component back to you insured, the next day. The complete custom rackmount will follow within the next 2 business days.

A second ordering option for custom mounting components with dimensions we don't have on file is to fax us the measurements using the form on this page. The W, H, and F dimensions shown in the illustration MUST be accurate within 1/32", depth can be within 1/8". The use of dimensions provided in the component's owner's manual are NOT acceptable. Please measure carefully as RSH units are custom-made and non-returnable.

If we need dimensions please photocopy, fill in and fax to 973-839-1076

Company Name:	Phone:
Contact Name	Fax:
P.O.#:	<input type="checkbox"/> Black brushed & anodized finish
	<input type="checkbox"/> Black textured finish
Make:	Model:
W=face width:	H=face height:
F=foot height:	Depth:

Please visit our website for a complete list of measured components.

