

## POWER METER



**ORDER CODE** SM POWER METER 1310/1550nm 2 DIGITS :  
**AFT-G-FM-2DG-S**

**ORDER CODE** SM POWER METER 1310/1550nm 3 DIGITS:  
**AFT-G-FM-3DG-S**

**ORDER CODE** MM POWER METER 850/1300nm 2 DIGITS:  
**AFT-G-FM-2DG-M**



2.5 mm to 1.25 mm Adapter

**ORDER CODE**  
**AFT-G-CAM**

The Power Meter measures power in both 850 nm / 1300 nm (Multimode) and 1310nm ~ 1625nm (Singlemode) respectively.

<b>Wavelength (Multimode)</b>	850 nm/ 1300 nm
<b>Optical Power Range (Multimode)</b>	-30 dBm ~ -15 dBm
<b>Wavelength (Singlemode)</b>	1310nm ~ 1625nm
<b>Optical Power Range (Singlemode)</b>	-40dBm ~ +5dBm
<b>Battery</b>	AAA 1.5Vx2
<b>Resolution</b>	1 dB/ 0.1dB
<b>Fiber Connector</b>	Universal Type
<b>Display</b>	2 digits/3 digits LED
<b>Operating Temp.</b>	0~ 50°C
<b>Storage Temp.</b>	0~ 70°C

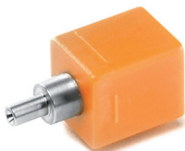
### FEATURES

- Robust & handy design with LED display
- Easy checking of Multimode and Singlemode output power 850nm ~ 1625nm
- Universal 2.5 mm to 1.25 mm adaptor for SC / ST / FC / LC / MU Connector
- 2 digits / 3 digits resolution with low voltage warning
- Battery warning LED display
- Multimode 850nm / 1300nm power measurement range -30dBm ~ -15dBm
- Singlemode 1310nm / 1625nm power measurement range -40dBm ~ +5dBm

## FIBER CHECKER



**ORDER CODE** FIBRE CHECKER  
**AFT-G-FC**



2.5 mm to 1.25 mm Adapter

**ORDER CODE**  
**AFT-G-CAC**

Refraction of the 650nm red light caused by any breaks and or cracks in the fiber will glow red, thus giving an exact visual location of the fault in the fiber.

<b>Laser Class</b>	Class 2M
<b>Wavelength</b>	650 nm +/-10 nm@ 25
<b>Spectral Width</b>	< 10 nm
<b>Output Power</b>	>0.5 mW@ 25 into singlemode fiber
<b>Mode</b>	CW/ Pulse
<b>Battery Type</b>	AAA 1.5Vx2
<b>Output Power Reliable</b>	+/-0.2 mW
<b>Transmitting Range</b>	Visibility to3 Km
<b>Operating Temp.</b>	0~ 50°C
<b>Storage Temp.</b>	0~ 70°C

### FEATURES

- Robust & handy design
- Dust-free cap to protect LD
- Continuous / Pulse Mode options
- Emitting LD 650 nm visible red light
- Auto Power Control circuit design to provide a stable LD output power
- Low Voltage Battery warning signal in LED
- Universal 2.5 mm ferrule to 1.25 mm adaptor
- Compatible to SC / ST / FC / LC Connectors
- Visibility to 3 Km