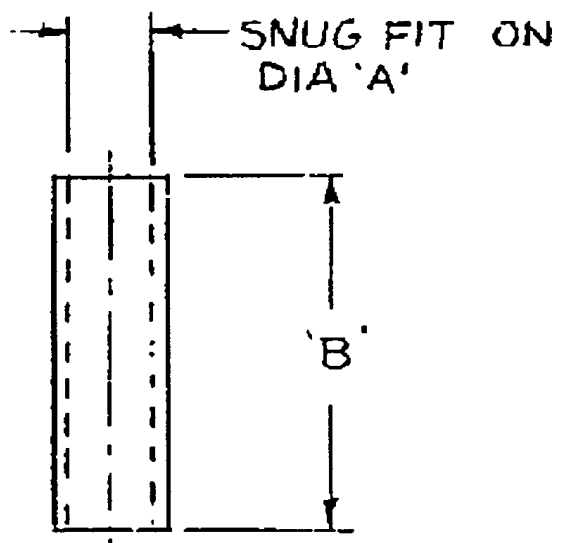


SIZE A 5464360 REV T



| REVISIONS | | | |
|-----------|--|-------------|-------------|
| LTR | DESCRIPTION | DATE | APPROVED |
| G | NEW DEV (1) REDRAWN (2) ADD PT B DEFELICE EC-1421 (1) ADDED P. NO'S. 9, 10 & 11 | MAR. 9 1971 | [Signature] |
| H | S. DEFELICE EN 5/17/71 (1) ADD. P. NO. 12 | JULY 9 1971 | [Signature] |
| J | STANLEY EC 2180 (1) ADD P 13 | NOV 3 1972 | [Signature] |
| K | JTSOUVALAS EC 3295-43A (1) ADD P 014 | [Date] | [Signature] |
| L | CLAYTON EC 9216-129 (1) ADD 1 OF 1 | 2/7/85 | [Signature] |
| M | KING. 9216-254 (1) REV'D MAT'L: BLK | 2/2/86 | [Signature] |
| N | KING. EC 9216-446 (1) 2.00 WAS 3-1/2 P 003 | 1/7/84 | [Signature] |
| P | P. BOVA EC 9216-586 (1) MAT'L WAS SUNKO DURO GRADE | 9/15/89 | [Signature] |
| R | TOMBINO EC 9216-752 (1) REV'D MAT'L | 8/1/90 | [Signature] |
| T | PONIKIEWSKI EC 16789-340 (1) P 002 WAS .239 (2) 3 PLACE TOLERANCE .010 ADDED | 8/22/06 | M GLASHEEN |

| P. NO | DIA 'A' | DIM 'B' |
|-------|---------|---------|
| 001 | .285 | 3 1/2 |
| 002 | .249 | 3 1/2 |
| 003 | .186 | 2.00 |
| 004 | .239 | 1 1/4 |
| 005 | .285 | 2 1/2 |
| 006 | .285 | 2.0 |
| 007 | .374 | 3 1/2 |
| 008 | .500 | 3.0 |
| 009 | .186 | 3.0 |
| 010 | .187 | 2 1/4 |
| 011 | .183 | 1 1/2 |
| 012 | .162 | 2.0 |
| 013 | .250 | 1.5 |
| 014 | .413 | 3.5 |

CURRENT DESIGN ACTIVITY CAGE CODE 97424

AMETEK

AEROSPACE PRODUCTS INC. WILMINGTON, MA.

| | | |
|--|--|--|
| UNLESS OTHERWISE SPECIFIED USE APPLIED PRACTICES 2H1000 ALL MACHINED SURFACES ✓ | DECIMAL TOLERANCES 2 PLACE .25 INCH OR LESS ± .01 OVER .25 INCH ± .02 3 PLACE ± .010 ANGLES ± | MAT'L: KRAFT PAPER TUBE 1/16 WALL MIN |
|--|--|--|

SEE SEPARATE PARTS LIST (FOR ASSEMBLY DWGS ONLY) ADDITIONAL CONTRACT NOS

| | | | | | |
|--------------------------|---------------|-----|----|----|--|
| FOR G.E. USE ONLY | SIGNATURES | DAY | MO | YR | GENERAL ELECTRIC A.I. DEPT - WILMINGTON, MASS., U.S.A. |
| ABBR | DRAWN R. TABB | 15 | 9 | 54 | |
| F.M.F. J-73 | CHECKED | | | | TITLE PROTECTIVE TUBING |
| MAT'L CODE | ISSUED HANLON | 24 | 9 | 54 | |
| MATERIAL GOV SEE NOTE | ENGRG | 7 | 7 | 7 | CONTRACT NO. SIZE CODE IDENT NO. DWG NO. A 97424 5464360 |
| G.E. | MFG | 7 | 7 | | |
| | | | | | SCALE NONE WT CALC ACTUAL SHEET 1 OF 1 |