



## 1/2 and 1/3 Space Blank Panel

Now you have a solution for non-full space items. These panels complete the finished, professional appearance while also ensuring correct thermal management performance by blocking unwanted air entry. Comes in your choice of steel or aluminum.

Steel, Flat Black Part #	Aluminum, Black Brushed and Anodized Part #	Racking Height
EB1/2	BL1/2	0.875" (1/2 space)
EB1/3	BL1/3	0.583" (1/3 space)



BL1/2

EB1/3

## Handle Panels

These panels provide a firm, safe grip for pull-out rack systems, while still allowing the use of trim strips if desired. The "one rackspace" design takes up minimal space in the installation, & protrudes 1-3/16". Comes in two finishes to best match the rack aesthetics.

Part #	Racking Height	Finish
EB1-H	1-3/4" (1 space)	flat black powder coat
BL1-H	1-3/4" (1 space)	black brushed and anodized



EB1-H

## Blank Panel with Rack I.D. Strip

Aluminum 1 space panels accept paper labels up to 1-1/2" tall by 17-1/2" wide.

Part #	Racking Height
PBL1-ID	1-3/4" (1 space)

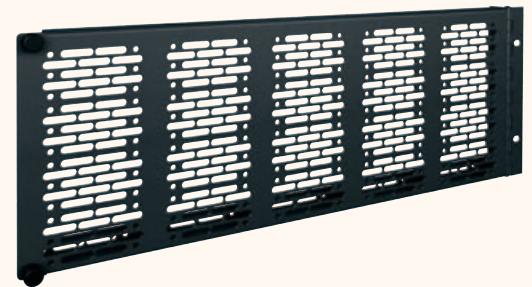


PBL1-ID

## Hinged Accessory Mounting Panel

Here's a great new solution for mounting small items conveniently in a rack. Aluminum panel is easily drilled for mounting punch-blocks, terminal strips, power supplies and similar items. Hinged design provides easy access for maintenance and changes.

Part #	Racking Height
APM-2	3-1/2" (2 space)
APM-3	5-1/4" (3 space)
APM-4	7" (4 space)

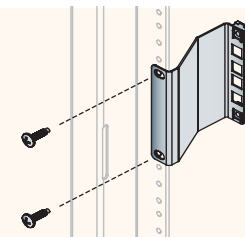


APM-3

## Rackrail Recessor

Allows room for cable bundles and handles. Enables installer to recess equipment 3 inches behind rackrail.

Part #	Description
RR2-3RCN	2 space/ 3" deep, rackrail recessor



RR2-3RCN

## Rack Sack™ Equipment Protection Cover

This heavy-duty cover will protect your installation while in progress, keeping it safe from dust and casual contact. Sturdy zippers on the corners make it easy to install and remove.

Part #	Dimensions
RS-6036	60"h x 25"w x 36"d
RS-8436	84"h x 25"w x 36"d



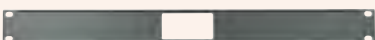
RS-6036

Custom logos available.  
Please call for details.





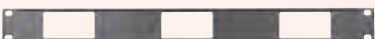
# UCP Panels, Rackmount Chassis and Access Panels



**DECIP-1X1**



**DECIP-1X2**



**DECIP-1X3**



**DECIP-1X4**



16 laser-cut knockouts

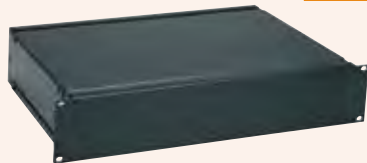
**UNI-1**

**UNI-1-C**

incorporates a 2-5/8" shelf with tie-points for cable strain relief

 EIA/TIA Compliant

Spec. # 96-004 for full product info.



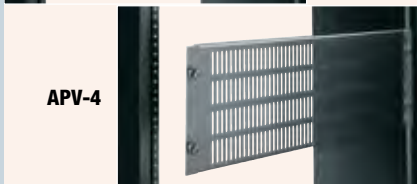
**CH2**



**EC-2**



**AP-4**



**APV-4**

## Panels for Decora® Devices

One space panels mount any low-voltage Decora device directly onto the rackrail of a standard 19" enclosure. Panels accommodate as many as four devices including the RPS Series remote power switch, LT-DEC light and the TEMP-DEC temperature display. Pre-configured panels are available with pre-installed Decora mount products for simplified ordering, see pg. 114 for more details. Constructed from one-piece flanged steel (with an open area of 1.62" between flanges), black powder coat finish.

Part #	Description
DECIP-1X1	1-3/4" (1 space) mounts up to 1 Decora devices
DECIP-1X2	1-3/4" (1 space) mounts up to 2 Decora devices
DECIP-1X3	1-3/4" (1 space) mounts up to 3 Decora devices
DECIP-1X4	1-3/4" (1 space) mounts up to 4 Decora devices

Part #	Description
LT2P	pre-configured with 2 LT-DEC lights
LT2P-T1P	pre-configured w/ 2 LT-DEC lights, 1 TEMP-DEC temperature display
T1P	pre-configured w/ 1 TEMP-DEC temperature display

## Universal Connector Panel

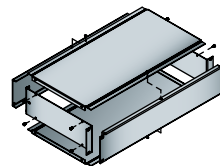
The UNI Series laser-cut connector panels feature knockouts designed to accept a number of connectors, including XLR and Neutrik. The innovative design allows mounting of both male and female connectors to the same holes simply by knocking out the correct pattern. The UNI-1-C incorporates a 2-5/8" strain relief shelf with tie-points for cable management. Made from one-piece flanged steel, black powder coat finish.

Part #	Laser-Cut Knockouts	Racking Height
UNI-1	16	1-3/4" (1 rackspace)
UNI-2	32	3-1/2" (2 rackspace)
UNI-1-C	16	1-3/4" (1 space) - includes cable management

## CH Chassis

With its aesthetically-balanced, screwless flush-mounted faceplate, our CH Chassis features a 16-gauge all-steel body finished in a black powder coat. Front and rear panels are made from aluminum for easy machining. The front faceplate additionally features a black brushed and anodized finish, while the rear faceplate is finished in a black powder coat.

Part #	Racking Height	Depth
CH1	1-3/4" (1 rackspace)	10"
CH2	3-1/2" (2 rackspace)	10"
CH3	5-1/4" (3 rackspace)	10"

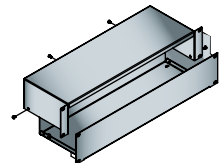


front and rear aluminum panels detach for simplified machining

## Econo Chassis

Providing a high quality rack chassis at an affordable price, the EC Series features a quick-to-disassemble two piece design incorporating a 16-gauge steel face, back and bottom, and 20-gauge steel top and sides. Black powder coat finish.

Part #	Racking Height	Depth
EC-1	1-3/4" (1 rackspace)	6"
EC-2	3-1/2" (2 rackspace)	6"
EC-3	5-1/4" (3 rackspace)	6"



two piece design for easy assembly

## Access Panels

Available in 2, 4, and 6 space models, these hinged access panels provide quick passage to rack interiors. Solid and vented panels available. Fabricated from easily machinable 13-gauge black powder coated aluminum, these access panels are perfect for those situations where access to the rear of connector panels is required. Captive 10-32 threaded thumbscrews require no tools to open and will not get lost.

Solid Part #	Vented Part #	Univ Mounting Part #	Racking Height
AP-2	APV-2	APM-2	3-1/2" (2 rackspace)
AP-4	APV-4	APM-4	7" (4 rackspace)
AP-6	APV-6	APM-6	10-1/2" (6 rackspace)

