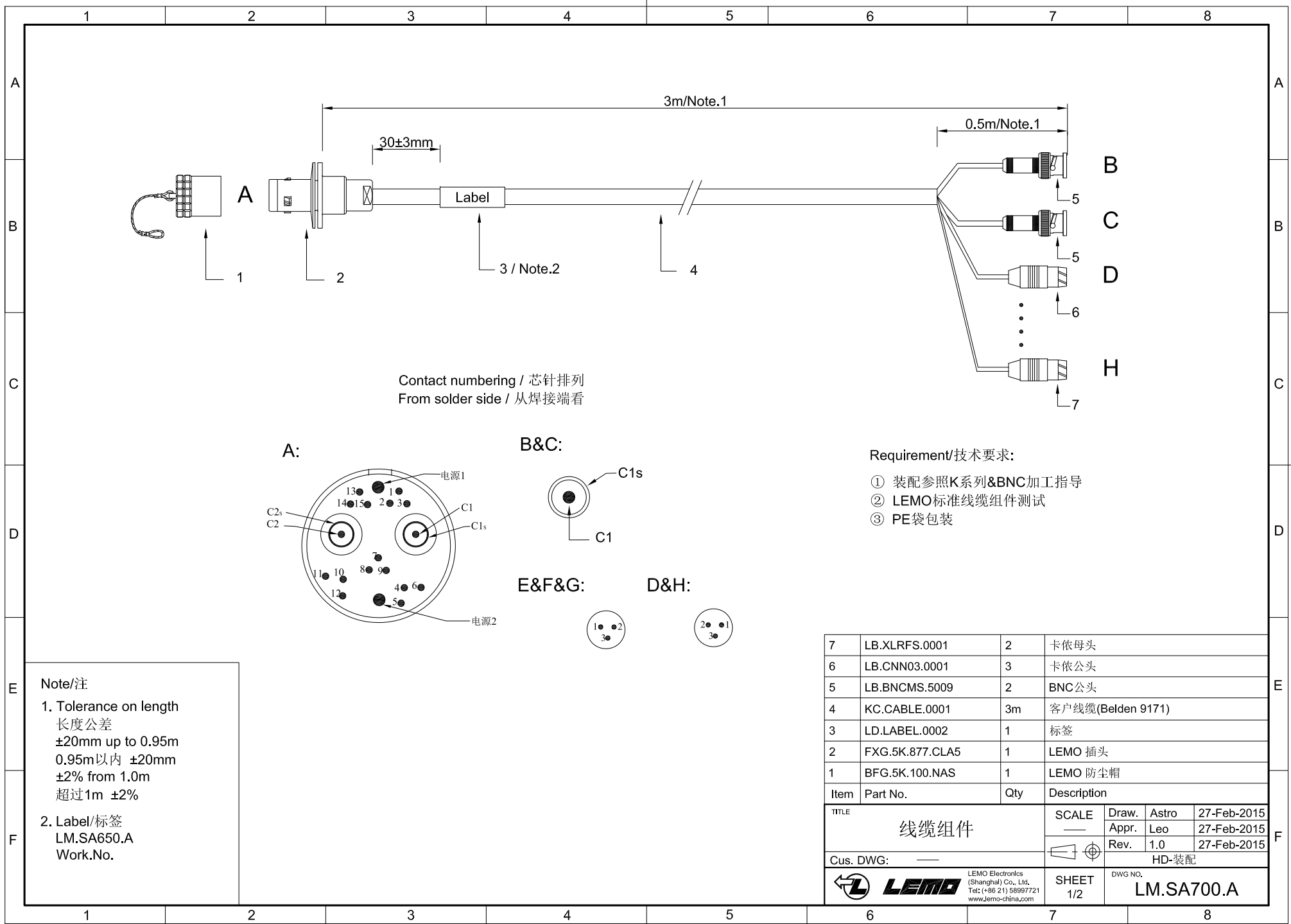
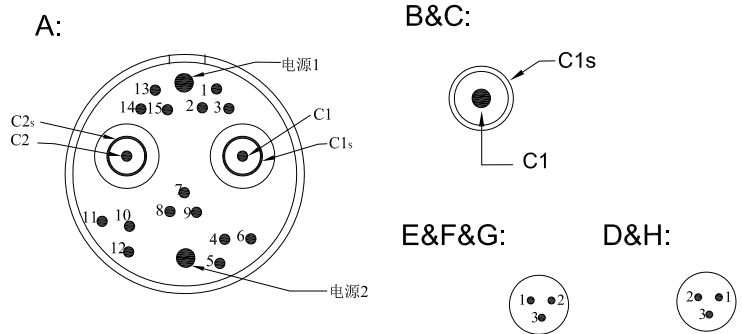


All rights reserved. Passing on and copying of this document, use and communication of its contents not permitted without written authorization of LEMO
未经LEMO许可, 不得擅自复制或发布



Contact numbering / 芯针排列
From solder side / 从焊接端看



- Requirement/技术要求:
- ① 装配参照K系列&BNC加工指导
 - ② LEMO标准线缆组件测试
 - ③ PE袋包装

Note/注

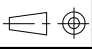

1. Tolerance on length
长度公差
±20mm up to 0.95m
0.95m以内 ±20mm
±2% from 1.0m
超过1m ±2%

2. Label/标签
LM.SA650.A
Work.No.

7	LB.XLRFS.0001	2	卡依母头
6	LB.CNN03.0001	3	卡依公头
5	LB.BNCMS.5009	2	BNC公头
4	KC.CABLE.0001	3m	客户线缆(Belden 9171)
3	LD.LABEL.0002	1	标签
2	FXG.5K.877.CLA5	1	LEMO 插头
1	BFG.5K.100.NAS	1	LEMO 防尘帽
Item	Part No.	Qty	Description
TITLE			SCALE
线缆组件			—
Cus. DWG: —			HD-装配
LEMO Electronics (Shanghai) Co., Ltd. Tel: (+86 21) 58997721 www.lemo-china.com			SHEET 1/2
DRAW. Appr. Leo			27-Feb-2015
Rev. 1.0			27-Feb-2015
DWG NO.			LM.SA700.A

All rights reserved. Passing on and copying of this document,
 use and communication of its contents not permitted
 without written authorization of LEMO
 未经LEMO许可, 不得擅自复制或发布

Connection Designation / 接线表			
EGG.5K.877插座	芯线颜色		
C1	同轴1 芯	C1	BNC (B)
C1s	同轴1 网	C1s	
C2	同轴2 芯	C2	BNC (C)
C2s	同轴2 网	C2s	
1	地线	1	卡依头D (母头)
2	黄	2	
3	黑	3	
4	地线	1	卡依头E (公头)
5	红	2	
6	黑	3	
7	地线	1	卡依头F (公头)
8	白	2	
9	黑	3	
10	地线	1	卡依头G (公头)
11	蓝	2	
12	黑	3	
13	地线	1	卡依头H (母头)
14	绿	2	
15	黑	3	
电源1	紫		
电源2	橙		
外壳	屏蔽网		

TITLE 线缆组件	SCALE —	Draw.	Astro	27-Feb-2015
		Appr.	Leo	27-Feb-2015
Cus. DWG: —		Rev.	1.0	27-Feb-2015
 LEMO Electronics (Shanghai) Co., Ltd. Tel: (+86 21) 58997721 www.lemo-china.com		HD-装配 SHEET 2/2 DWG NO. LM.SA700.A		