

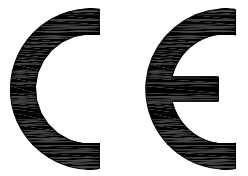
XXXXXX

"xxxxxx" SEE THE "P/N CHART"
DETAIL A

P/N CHART

1019219	1019219	3000(118")
20039752-2-1	20039752-2-1	2250(88.6")
P/N	xxxxxx(LABEL)	L(MM(INCH))

MANUFACTURED IN CHINA



<input checked="" type="checkbox"/> O
<input type="checkbox"/> S

DRAWING APPROVED _____		DATE: _____	
SAMPLE APPROVED PER _____		DATE: _____	
<small>PROPRIETARY & CONFIDENTIAL. THE INFORMATION CONTAINED IN THIS DRAWING IS THE SOLE PROPERTY OF C2G. ANY REPRODUCTION IN PART OR AS A WHOLE WITHOUT THE WRITTEN PERMISSION OF C2G IS PROHIBITED.</small>			
ϕ \square mm(inch)	TITLE		
SCALE	NONE		
SHEET	1/4		
DIMENSIONAL TOLERANCES UNLESS OTHERWISE NOTED		CUS. NAME	C2G
.X ± =0.3(0.02")	.XX ± =0.10(0.004")	CUS. P/N	SEE P/N CHART
.XXX ± =0.050(0.002")	ANGLES ±	DRAW NO.	P0906025-E
REV. 7	CUS. REV	ENG.	DATE
		Checked	DATE
		APPROVED	DATE
		Sean	2014-10-16

NOTES:

- DVI CABLE: UL20276, SEE SEC A-A.
 RATING: TEMP 80°C VOLTAGE 30V
 CONDUCTOR RESISTANCE: AT 20°C MAX
 28AWG: 237.25Ω/KM
 IMPEDANCE: 100±10Ω
 ATTENUATION(5M): AT 400MHZ≅6.0DB AT 800MHZ≅8.2DB
 TIME DELAY SKEW: WITHIN A PAIR(MAX) 150PS/CABLE
 BETWEEN PAIRS(MAX) 2400PS/CABLE
 TENSILE STRENGTH: UNAGED : 1500PSI MIN
 AGED:70% MIN
 DEFORMATION TEST: MAX 50%
 FLAME TEST: PASSED UL VW-1
 CABLE MARKING: PRINTING INCLUDE: "E*****" & "ㄨ" & "20276 80°C 30V" & " DVI DIGITAL SINGLE LINK" ALONG ITS LENGTH.
- CONNECTOR: P1 & P2: DVI24M, DVI-DIGITAL DUAL LINK, SOLDER TYPE, GOLD FLASH CONTACTS,
 HOUSING: BLACK PBT INSULATION. GOLD PLATED FRONT SHELL.
 HOOD: MOLDED BLACK (Pantone/#Black 6C) PVC.
- THUMB SCREW: #4-40UNC,GOLD PLATED, MOLDED BLACK (Pantone/#Black 6C) PVC.
- SHIELDING: METAL CAN CONNECT WITH CONNECTOR SHELL & CABLE BRAID.
- ALL MATERIALS ARE RoHS COMPLIANT(DEHP:<1000PPM;BBP:<1000PPM; DBP:<1000PPM;BPA:<100PPM).
- TESTING: 100% TEST FOR SHORT/OPEN: 10M OHM INSULATION RESISTANCE (300V DC).
- PACKING: EACH CABLE IN A CLEAR ZIP-LOCK POLYBAG, LABEL
 (WHITE BACKGROUND WITH BLACK LETTERS, SEE "DETAIL A")
 TO BE PASTED ON THE ZIP-LOCK POLYBAG.
- ALL DIMENSIONS ARE IN MILLIMETERS (INCHES)

MANUFACTURED IN CHINA

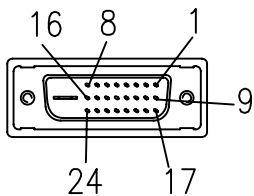
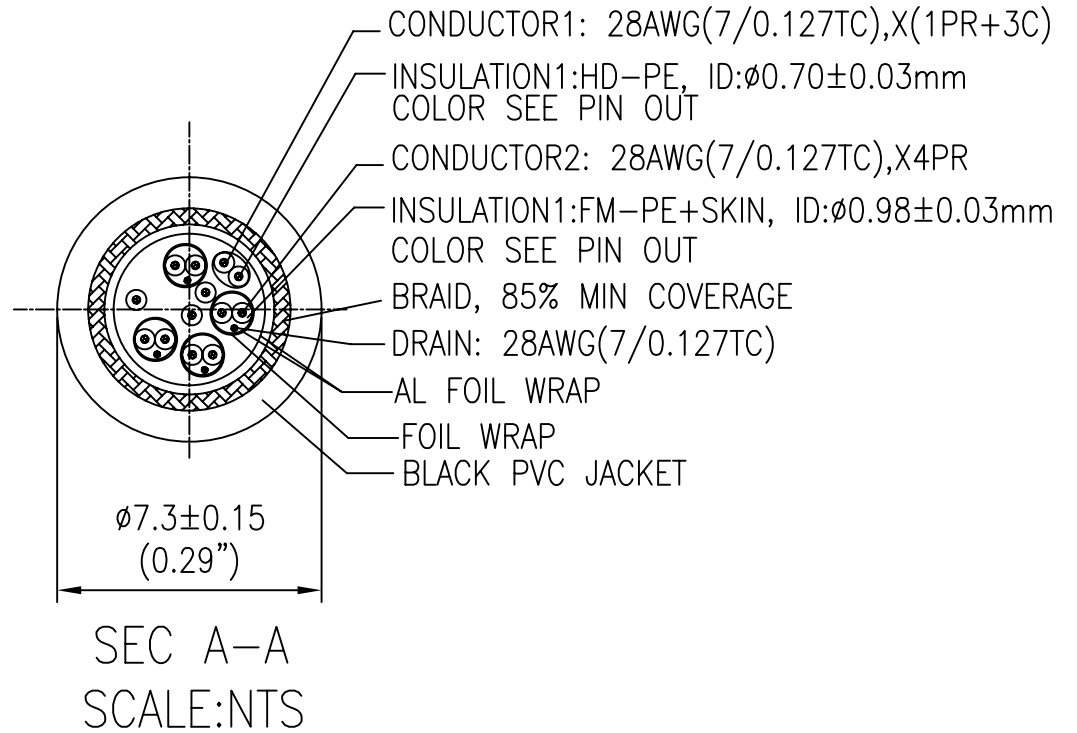
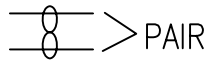


<input checked="" type="checkbox"/> O
<input type="checkbox"/> S

DRAWING APPROVED _____		DATE: _____	
SAMPLE APPROVED PER _____		DATE: _____	
<small>PROPRIETARY & CONFIDENTIAL. THE INFORMATION CONTAINED IN THIS DRAWING IS THE SOLE PROPERTY OF C2G. ANY REPRODUCTION IN PART OR AS A WHOLE WITHOUT THE WRITTEN PERMISSION OF C2G IS PROHIBITED.</small>			
	mm(inch)	TITLE DVI-D MALE TO DVI-D MALE	
SCALE	NONE	CUS. NAME C2G	
SHEET	2/4	CUS. P/N SEE P/N CHART	
<small>DIMENSIONAL TOLERANCES UNLESS OTHERWISE NOTED</small> .X ± =0.3(0.02") .XX ± =0.10(0.004") .XXX ± =0.050(0.002") ANGLES ±		DRAW NO. P0906025-E	
REV. 7	CUS. REV	ENG. DATE Judy 2014-10-16 CHECKED DATE Dave 2014-10-16 APPROVED DATE Sean 2014-10-16	

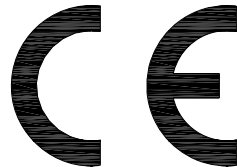


		PIN OUT				
		P1	---	P2		
28AWG	{	1	—	1	WHITE	
28AWG		2	—	2	BROWN	
28AWG		3	—	3	(DRAIN)	
28AWG	{	6	—	6	WHITE	
28AWG		7	—	7	RED	
28AWG		9	—	9	WHITE	
28AWG	{	10	—	10	RED	
28AWG		11	—	11	(DRAIN)	
28AWG	{	14	—	14	ORANGE	
28AWG		15	—	15	YELLOW	
28AWG	{	16	—	16	PURPLE	
28AWG		17	—	17	WHITE	
28AWG	{	18	—	18	GREEN	
28AWG		19	—	19	(DRAIN)	
28AWG	{	23	—	23	WHITE	
28AWG		24	—	24	BLUE	
		22	—	22	(DRAIN)	
		SHELL	—	SHELL (BRAID)		



DVI24 MALE FRONT VIEW

MANUFACTURED IN CHINA



<input checked="" type="checkbox"/> O
<input type="checkbox"/> S

DRAWING APPROVED _____		DATE: _____	
SAMPLE APPROVED PER DRAWING SPECIFICATIONS _____		DATE: _____	
<small>PROPRIETARY & CONFIDENTIAL. THE INFORMATION CONTAINED IN THIS DRAWING IS THE SOLE PROPERTY OF C2G. ANY REPRODUCTION IN PART OR AS A WHOLE WITHOUT THE WRITTEN PERMISSION OF C2G IS PROHIBITED.</small>			
⌀ mm(inch) SCALE NONE SHEET 3/4	TITLE DVI-D MALE TO DVI-D MALE	 GET CONNECTED	
	CUS. NAME C2G	ENG. DATE July 2014-10-16	
	CUS. P/N SEE P/N CHART	CHECKED DATE Dave 2014-10-16	
	REV. 7 CUS. REV	APPROVED DATE Sean 2014-10-16	
	DIMENSIONAL TOLERANCES UNLESS OTHERWISE NOTED	DRAW NO. P0906025-E	
.X ± =0.3(0.02")	.XX ± =0.10(0.004")		
.XXX ± =0.050(0.002")	ANGLES ±		

