

Faster.  
Easier.  
Better.



## GigaBIX IDC System, Category 6

### Kits, Components, Patch Cords and Accessories

The Belden GigaBIX Cross-Connect System takes advantage of the proven reliability of BIX technology to provide high-performance connections for data networks. This uniquely designed system allows for very high termination density, while maintaining optimal ease of administration to accommodate moves, adds and changes.

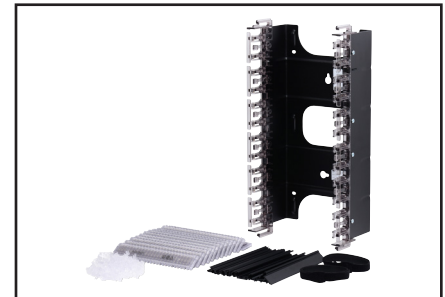
Advantages of the Belden GigaBIX Cross-Connect System include easy installation and cable management, coupled with the industry's best performance-to-price ratio for high-density connectivity. The system allows up to 300 pairs to be terminated in a very small area—a real space-saving advantage in today's office environment where real estate is at a premium.

### GigaBIX IDC System

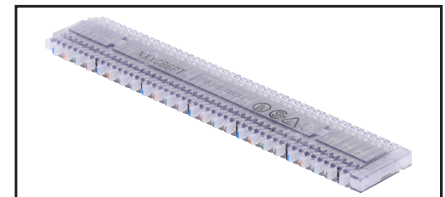
Description	Belden Part Number
<b>GigaBIX Termination Kits</b>	
GigaBIX Termination Kit, 72-port	AX101470
GigaBIX Termination Kit, 300-pair	AX101471
GigaBIX Rack Mount Termination Kit, 48-port	AX101985
<b>GigaBIX Connecting Components</b>	
GigaBIX Connector, 6-port	AX101447
GigaBIX Connector, 25-pair	AX101448
GigaBIX Mount, 12-connector	AX101472
GigaBIX Rack Mount Panel, 48-port, 3U, Empty	AX101986
GigaBIX Wire Guard	AX101486
GigaBIX Designation Strip	AX101483
GigaBIX Termination Bar	AX101719
<b>GigaBIX Cable Management Accessories</b>	
GigaBIX Cable Management Module	AX101469
GigaBIX Patch Cord Organizer	AX101468
GigaBIX Patch Cord Organizer, Cover	AX101521
GigaBIX Horizontal Channel Plate	AX101520
GigaBIX Management Ring	AX101478
GigaBIX/MediaFlex Adapter	AX101987
10GX IDC Connecting Block Holder 6 positions	AX102677
GigaBIX Color-Coded Clip, Red	AX102151
GigaBIX Color-Coded Clip, Yellow	AX102152
GigaBIX Color-Coded Clip, Green	AX102153
GigaBIX Color-Coded Clip, Blue	AX102154
GigaBIX Color-Coded Clip, Gray	AX102146
GigaBIX Color-Coded Clip, White	AX102148
GigaBIX Color-Coded Clip, Black	AX102149
<b>GigaBIX Frames and Accessories</b>	
GigaBIX Frame, 1152 ports/4800 pairs	AX102073
GigaBIX Deep Frame, 1152 ports/4800 pairs	AX104474
GigaBIX Frame End Kit	AX102082
GigaBIX Frame Overhead Kit	AX102145
<b>Cross-Connect Wire</b>	
GigaBIX 4-pair XC Wire, Reel-in-a-Box	XCGB4 000A1000
GigaBIX 4-pair XC Wire, Reel	XCGB4 000I000

### CAT6+ GigaBIX Patch Cords

Description	Belden Part Number		
	BIX-BIX	BIX-8MOD T568A-ISDN	BIX-8MOD T568B-ALT
1.2 m (4 ft)	AX101945	AX101951	AX101957
1.8 m (6 ft)	AX101946	AX101952	AX101958
2.4 m (8 ft)	AX101947	AX101953	AX101959
3.0 m (10 ft)	AX101948	AX101954	AX101960
4.6 m (15 ft)	AX101949	AX101955	AX101961
7.6 m (25 ft)	AX101950	AX101956	AX101962



GigaBIX Termination Kit, 72-port



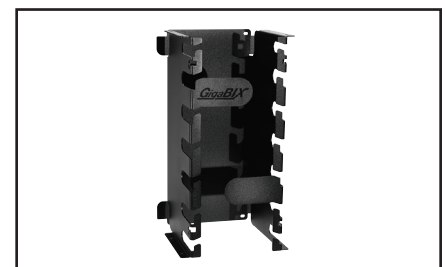
GigaBIX Connector, 6-port



CAT6+ GigaBIX Patch Cord, BIX-BIX, 4 ft



GigaBIX Cable Management Module



GigaBIX Patch Cord Organizer

CAT6+ UTP IDC System