

AX104682 Faceplates and Panels - FiberExpress Ultra HD Patch Panel Housing 2U



For more Information
please call

1-800-Belden1

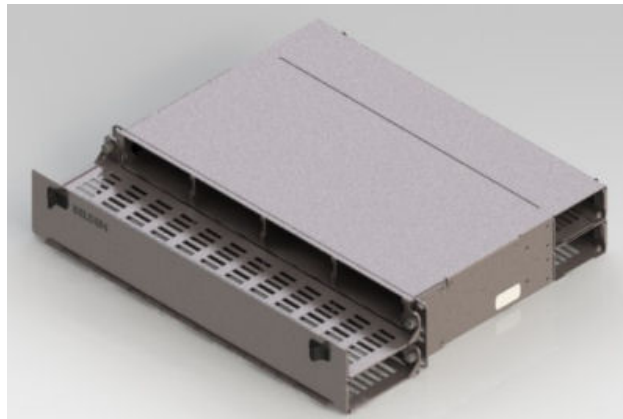


General Description:

FiberExpress Ultra HD Patch Panel Housing 2U, Empty, Titanium

Image

Image:



Usage (Overall)

Suitable Applications: FiberExpress Solutions, Backbone, Telecommunications Room, Main Distribution Room, Data Centers

Related Parts: FiberExpress Ultra and Ultra High Density Frames and Cassettes

Physical Characteristics (Connectivity)

Capacity

FXU HD Patch Panel Capacity:

Type	FX Ultra HD Frame/ Cassettes	FX Ultra HD LC Duplex / MPO Connectors	FX Ultra Frame/ Cassettes	FX Ultra LC Duplex / MPO Connectors
FiberExpress Ultra HD Patch Panel Housing 1U	4	72	4	48
FiberExpress Ultra HD Patch Panel Housing 2U	8	144	8	96
FiberExpress Ultra HD Patch Panel Housing 4U	16	288	16	192

Access

Front Connection: 1inch Pullout FXU / Static FXU HD

Termination Area: Front Sliding Drawer

Dimensions

Dimensions:

Height (in.)	Width (in.)	Depth (in.)
3.500	19.000	16.750

Materials

Materials:

Description	Material
Panel	Steel/Aluminum
Door	Aluminum

Color

Color: Titanium

Weight

Weight: 10.140 lbs.

Included Parts

AX104682 Faceplates and Panels - FiberExpress Ultra HD Patch Panel Housing 2U

Included Parts: Screws (12-24); Screws (10-32); Screws (8-32); Tie Wraps; Kurly locks; Velcro Straps; Identification Labels

Packaging

Packaging: Individually packaged in a cardboard box.

Mechanical Characteristics (Connectivity)

Storage Temperature Range: -40°C To +70°C

Operating Temperature Range: -10°C To +60°C

Applicable Specifications and Agency Compliance (Overall)

Applicable Standards & Environmental Programs

EU Directive 2002/95/EC (RoHS): Yes

EU RoHS Compliance Date (mm/dd/yyyy): 02/23/2009

MIL Order #39 (China RoHS): EUP 50

Suitability

Suitability - Indoor: Yes

Transmission Characteristics (Connectivity)

Notes (Overall)

Notes: For more information, please refer to our web site at <http://www.belden.com>. Installation Guide:PX105560.

Product Family

Part Numbers:

Description	Titanium Item Number	Black Item Number	Tool Item number
FiberExpress Ultra HD Patch Panel Housing 1U, Empty	AX104681	AX105563	-
FiberExpress Ultra HD Patch Panel Housing 2U, Empty	AX104682	AX105564	-
FiberExpress Ultra HD Patch Panel Housing 4U, Empty	AX104683	AX105565	-
FiberExpress Ultra HD Splice Housing Kit 1U, 144 Splices, Empty	AX104684	AX105678	-
FiberExpress Ultra HD 1U Standard Fixed Shelf, Empty	AX105164	AX105673	-
FiberExpress Ultra HD 1U Recessed Fixed Shelf, Empty	AX105165	AX105674	-
FiberExpress Ultra HD 4U Standard Fixed Shelf, Empty	AX105166	AX105675	-
FiberExpress Ultra HD 4U Recessed Fixed Shelf, Empty	AX105167	AX105676	-
FiberExpress Ultra HD Splice Housing Kit 1U, 72 Splices, Empty	AX105174	AX105677	-
FiberExpress Ultra HD Patch Cord Tray Cover	AX105162	AX105672	-
FiberExpress Ultra HD Release Tool	-	-	AX104685
FiberExpress Ultra HD Splice Accessory Kit	-	-	AX104705

Related Documents

Installation Guide: http://www.belden.com/docs/upload/PX105678-EN_FX_Ultra_HD_Patch_Panel_Housing_4U-2U.pdf

Product Bulletin: http://www.belden.com/resourcecenter/documents/upload/PB500_FiberExpress_Ultra_HD_System.pdf

AutoCAD Drawing: <http://www.belden.com/pdfs/BIMModels/Belden-393.zip>

PDF Drawing: <http://www.belden.com/docs/upload/Belden-393.pdf>

Put Ups and Colors:

Item #	Putup	Ship Weight	Color	Notes	Item Desc
AX104682	1 EA	11.023 LB			FX UHD 2U PATCH PANEL HOUSING
AX104682+CN	1 EA	11.023 LB			REPLACED BY AX104682

Revision Number: 0 Revision Date: 12-16-2013

© 2014 Belden, Inc.
All Rights Reserved.

Although Belden makes every reasonable effort to ensure their accuracy at the time of this publication, information and specifications described herein are subject to error or omission and to change without notice, and the listing of such information and specifications does not ensure product availability. Belden provides the information and specifications herein on an "AS IS" basis, with no representations or warranties, whether express, statutory or implied. In no event will Belden be liable for any damages (including consequential, indirect, incidental, special, punitive, or exemplary damages) whatsoever, even if Belden has been advised of the possibility of such damages, whether in an action under contract, negligence or any other theory, arising out of or in connection with the use, or inability to use, the information or specifications described herein. All sales of Belden products are subject to Belden's standard terms and conditions of sale. Belden believes this product to be in compliance with EU RoHS (Directive 2002/95/EC, 27-Jan-2003). Material manufactured prior to the compliance date may be in stock at Belden facilities and in our Distributor's inventory. The information provided in this Product Disclosure, and the identification of materials listed as reportable or restricted within the Product Disclosure, is correct to the best of Belden's knowledge, information, and belief at the date of its publication. The information provided in this Product Disclosure is designed only as a general guide for the safe handling, storage, and any other operation of the product itself or the one that it becomes a part of. This Product Disclosure is not to be considered a warranty or quality specification. Regulatory information is for guidance purposes only. Product users are responsible for determining the applicability of legislation and regulations based on their individual usage of the product.