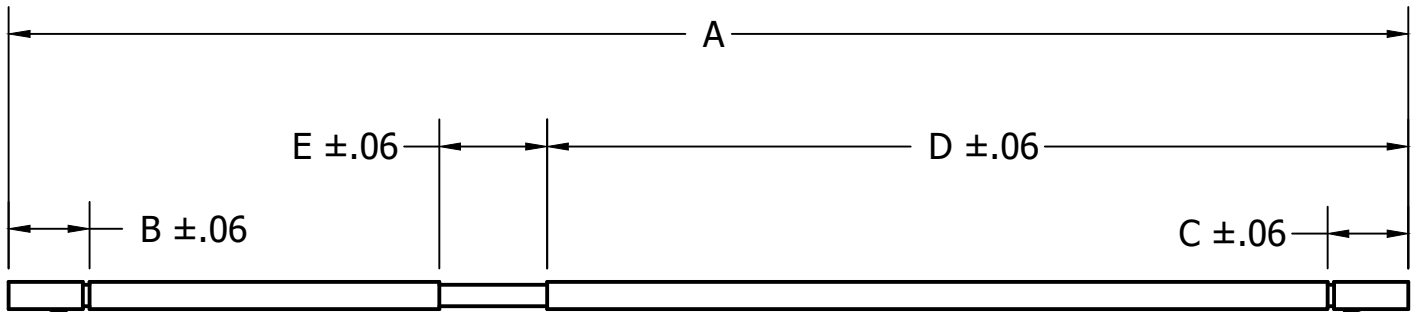


NOTES:

1. MATERIAL: #6 SOLID, HMW INSULATED WIRE, BLACK, PART NO. Z447A1.
2. MATERIAL: #4 SOLID, HMW INSULATED WIRE, BLACK, PART NO. Z447A2.

APPD	CHANGES	
P15-40	4	P15A804: REDREW IN INVENTOR. CREATED PART NO. AZ23J4.
DRM	SRU	2/13/15



CUT, BUT DO NOT STRIP
(LEAVE INSULATION IN PLACE)

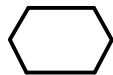
SEE NOTE 2	1.75	70.25	1.50	1.50	88.00	AZ23J4
SEE NOTE 2	1.00	16.00	1.00	1.00	112.00	AZ23J3
SEE NOTE 1	1.50	16.00	1.50	1.50	84.00	AZ23J2
SEE NOTE 1	1.50	12.00	1.50	1.50	72.00	AZ23J1
MATERIAL	"E"	"D"	"C"	"B"	"A"	PART NO.

Special Characteristics =0



RCD

Required
Control Dimension



STD

Statistically
Toleranced Dimension

Requirement must have
additional care and control.
(Initial and Ongoing)

Requirement must have care
and control in the form of
capability (Initial and Ongoing)

P99-77

DO NOT SCALE DRAWING

TOLERANCES
EXCEPT AS NOTED

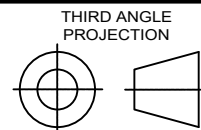
PRINTED DOCUMENT
IS UNCONTROLLED



Powering Business Worldwide

DIMENSIONS IN INCHES
EXCEPT AS NOTED

DECIMAL
.X ±
.XX ±
.XXX ±



TITLE
COPPER LEAD WIRE
#4 & #6 SOLID WITH HMW
POLYETHYLENE INSULATION

MATERIAL

ANGULAR
.X° ±

SHEET 1 OF 1

DRAWN BY **SRU** DWG DATE **2/13/15**

A SCALE **NA** CHK'D **DRM**

EATON CONFIDENTIAL

DOC NO. **AZ23J**

REV
4