

75Ω BNC Receptacles

BNC Receptacles emphasizing true 75Ω impedance.

■ Panel Mount Receptacles

Model	Description	Suitable Cable	Die Set
BCJ-R	Jack to Solder Pin	—	—
BCJ-R/1	Jack to Solder Cup with Ground Lug	—	—
BCJ-FC1	Panel Jack	1.5C-2V	TCD-1DB
BCJ-FC1-7/16			
BCJ-JR	Jack to Jack	—	—

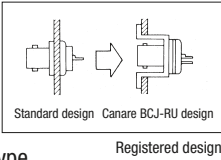
•Standard package (20pcs / 100pcs)

■ Recessed Bulkhead Receptacles

Model	Description	Suitable Cable	Die Set
BCJ-RU	Jack to Solder Cup	—	—
BCJ-RUC1	Panel Jack	1.5C-2V	TCD-1DB
BCJ-RUD	Jack to Solder Cup, Neutrik D type	—	—
BCJ-RUDB	Jack to Solder Cup, Neutrik D type (Black)	—	—
BCJ-JRU	Jack to Jack	—	—
BCJ-JRUD	Jack to Jack, Neutrik D type	—	—
BCJ-JRUDB	Jack to Jack, Neutrik D type (Black)	—	—

•Standard package (20pcs / 100pcs)

- 1.1 or less VSWR up to 2GHz. (1.1 up to 1GHz for the Panel Jack type)
- Beryllium copper (gold plated) is used on the center contact for its superior spring characteristics.
- Center contact for the solder pin connectors are solder type.
- The recessed flush-mount configuration is designed to prevent damage on the flange type connectors.
- Two types of flange are available: ITT XLR-F77 and Neutrik D compatible.
- The panel jack connectors are based on a space-saving configuration designed for use with internally hard-wired equipment.
- Connection portion of the panel jack connectors is securely shielded by the metal crimp sleeve.



Be sure to use the Canare crimping tool for the panel jack connectors.

- A ground lug can be provided for the BCJ-R connector. Information is available on request.

■ Panel Hole Dimensions

BCJ-R	★BCJ-R/1 ★BCJ-JR	BCJ-FC1	★BCJ-FC1-7/16	BCJ-RUC1 BCJ-RU BCJ-JRU	BCJ-RUD BCJ-RUDB BCJ-JRUD BCJ-JRUDB

★ Indicate connectors that accept insulation bushing. Mounting hole for insulation bushing IU 7/16 should be adopted.

Insulation Bushing

Model	Description
IU-7/16	ABS plastic, Color: White (standard stock). Black, Blue, Green, Red and Yellow (custom*)

•Standard package (20pcs)

*MOQ: 5000pcs

- Used to insulate a connector from a panel.

Note: Please remove washers from a connector before using IU-7/16.

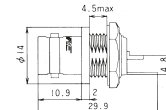
Mountable panel thickness:

1.2~1.5mm: BCJ-FPLVA, BCJ-FPLHA, BCJ-R/1

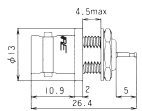
1.2~3.0mm: BCJ-FPC, BCJ-FPC02, BCJ-JR, BCJ-FPLV01



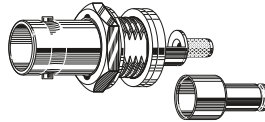
BCJ-R/1



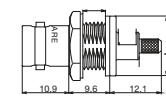
BCJ-R/1



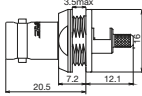
BCJ-R



BCJ-FC1-7/16



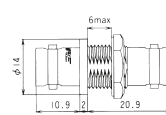
BCJ-FC1-7/16



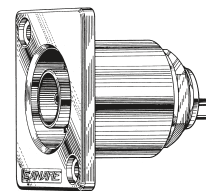
BCJ-FC1



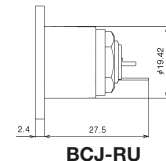
BCJ-JR



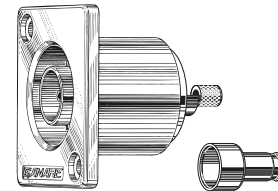
BCJ-JR



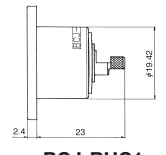
BCJ-RU



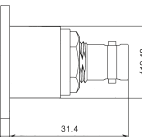
BCJ-RU



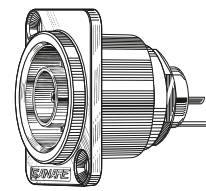
BCJ-RUC1



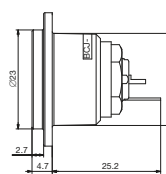
BCJ-RUC1



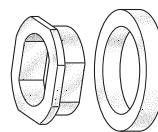
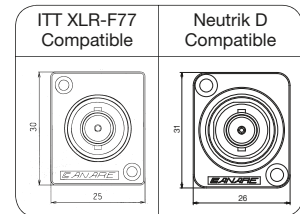
BCJ-JRU



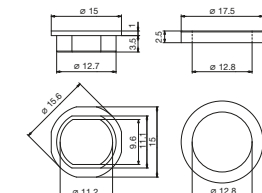
BCJ-RUD



BCJ-RUD



IU-7/16



Panel Hole Dimensions