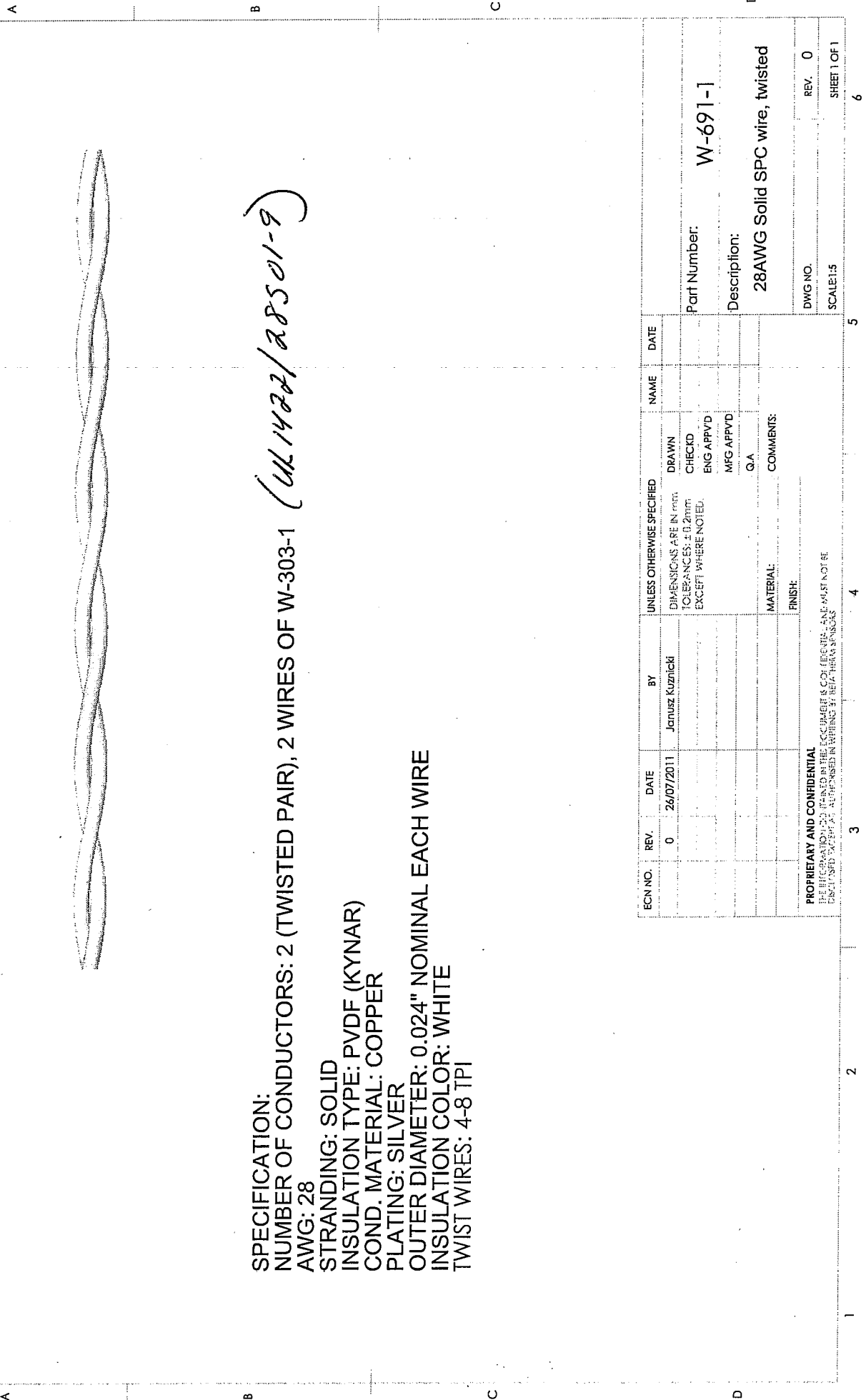


1 2 3 4 5 6



*(uk 1422/28501-9)*

**SPECIFICATION:**  
**NUMBER OF CONDUCTORS: 2 (TWISTED PAIR), 2 WIRES OF W-303-1**  
**AWG: 28**  
**STRANDING: SOLID**  
**INSULATION TYPE: PVDF (KYNAR)**  
**COND. MATERIAL: COPPER**  
**PLATING: SILVER**  
**OUTER DIAMETER: 0.024" NOMINAL EACH WIRE**  
**INSULATION COLOR: WHITE**  
**TWIST WIRES: 4-8 TPI**

ECN NO.	REV.	DATE	BY	UNLESS OTHERWISE SPECIFIED	NAME	DATE
	0	26/07/2011	Janusz Kuznicki	DIMENSIONS ARE IN PARENTHESES TOLERANCES: ± 0.20mm EXCEPT WHERE NOTED.	DRAWN	
					CHECKED	
					ENG APPVD	
					MFG APPVD	
					G.A.	
					COMMENTS:	
					MATERIAL:	
					FINISH:	
<b>PROPRIETARY AND CONFIDENTIAL</b> THE INFORMATION CONTAINED HEREIN IS CONFIDENTIAL AND NOT BE DISCLOSED TO OTHERS WITHOUT THE WRITTEN AUTHORIZATION OF THE COMPANY						

Part Number: **W-691-1**  
 Description:  
**28AWG Solid SPC wire, twisted**  
 DWG NO. \_\_\_\_\_ REV. **0**  
 SCALE: 1:5 SHEET 1 OF 1

1 2 3 4 5 6