

BMP®51 / BMP®53 Label Makers

BradyID.com/bmp51

Portable Printers



BMP®53
LABEL MAKER

BMP®51
LABEL MAKER



Made to get the **job done.**

Print continuous and die cut labels up to 1.5" wide and with more material options.

- Ribbon and label materials in one easy to load cartridge
- Fast print speed. Prints 1 inch per second!
- More than 200 label parts in 14 material types
- 1" sleeves and 1.5" wide continuous output
- Material recognition and automatic label formatting
- Large, graphical display with backlight
- Durable built-in cutter with label retention
- Compatibility with LabelMark™ software for advanced label design and data importation
- Optional Wi-Fi card for wireless printing via a network
- Continuous and die-cut label materials available
- Tough, durable label materials that won't fade, smear or fall off



View Online!

Visit BradyID.com/bmp51 for more information on the BMP®51 and BMP®53 label printers.

Your Complete Printing Solution:

BMP®51 & BMP®53 cartridges with label and print ribbon..... page 18



BMP51 Label Maker

Don't need the keyboard or screen?

Check out the BMP®53 Label Maker - many of the same features as the BMP®51 Label Maker, minus the display screen and keyboard.

- Create labels with LabelMark™ or CodeSoft™ Software
- Use the same label cartridges as BMP51

BMP®51 & BMP®53 Label Printers

Catalog #	Description
BMP51	BMP51 Printer, Rechargeable Li-Ion Battery Pack and AC Adaptor/Battery Charger*
BMP51-KIT-AC	BMP51 Printer with AC Adaptor/Battery Charger*
BMP51-KIT-LMK	BMP51 Printer, LabelMark Software and AC Adaptor*
BMP53	BMP53 Peripheral Printer with AC Adaptor / Battery Charger*
BMP53-KIT-AC-BP	BMP53 Printer, Rechargeable Li-Ion Battery Pack and AC Adaptor/Battery Charger*
BMP53-KIT-LMK	BMP53 Printer, LabelMark Software and AC

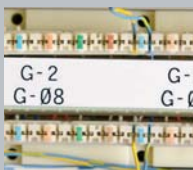
* Printer ships with Hard Carrying Case, Battery Tray for AA batteries, USB Cable, Drivers CD, Product CD, Quick Start Guide, and one MC-1500-595-WT-BK. BMP53 printer also ships with a pre-installed WiFi network card. Network cards for BMP51 printer sold separately.

Patents applied for: 6,732,619 and 7,070,347 on the BMP51 and BMP53 Label Makers. 6,929,415 on the PermaSleeve® cartridges. 8,542,155 on wireless and ethernet cards.

Accessories

Catalog #	Description
M50-MAGNET	BMP50 Series Magnet Accessory
BMP-UBP	Lithium Ion Rechargeable Battery Pack for Mobile Printers
BMP-UBP-AC	Lithium Ion Rechargeable Battery Pack with AC Adaptor/Battery Charger
142267	Brady Network Card - Ethernet only
142268	Brady Network Card - WiFi + Ethernet
M50-HC	BMP50 Series Hard Carrying Case
M50-SC	BMP50 Series Soft Carrying Case
M-AC-143110	BMP50 Series AC Adaptor/Battery Charger
M50-CABLE	BMP50 Series USB Cable
M50-BATT-TRAY	BMP50 Series Spare Battery Tray

Get the job done **FASTER, EASIER** and **WITH CONFIDENCE.**



Voice & Data Communications



PermaSleeve® Wire Marking Sleeves



Product Identification



Facility & Safety Identification



Laboratory Identification



General ID ...and many more!

BMP®51 / BMP®53 Printers