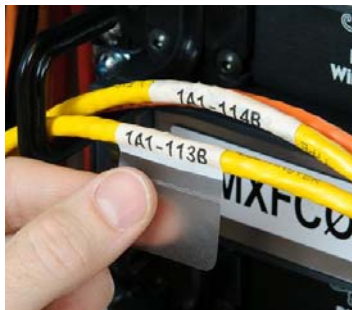


Get the job done for less with a Brady Starter Kit.

Save 10% versus purchasing each part separately!



* BMP51 kit shown.

Voice / Data Communications Starter Kit

Everything you need to get started with your voice/data labeling. Kit includes:

- Hard case, USB cable and AC power supply
- Self-laminating cable markers (M-21-427)
- Port, faceplate and general ID labels (M-30-422)
- Non-adhesive slide-in strips for punch blocks (MC-475-412)
- Rack and panel labels (MC-1000-595-YL-BK)
- 1.5" White label roll for general ID (MC-1500-595-WT-BK)

Catalog #	Description
BMP51-KIT-VD	Kit with BMP51 Label Printer and Li-Ion Battery
BMP53-KIT-VD	Kit with BMP53 Label Printer and LabelMark™ Software



* BMP51 kit shown.

Electrical Starter Kit

This kit includes a variety of wire and cable marking materials, as well as continuous tape for panel identification. Kit includes:

- Hard case, USB cable and AC power supply
- Self-laminating wire markers (M-103-427)
- Wrap around wire markers (M-18-498)
- PermaSleeve® PS heat shrink wire markers (M-187-1-342)
- Panel identification labels (MC-1500-595-OR-BK)
- 1.5" White label roll for general ID (MC-1500-595-WT-BK)

Catalog #	Description
BMP51-KIT-EL	Kit with BMP51 Label Printer and Li-Ion Battery
BMP53-KIT-EL	Kit with BMP53 Label Printer and LabelMark™ Software



* BMP51 kit shown.

Facility Identification Starter Kit

Kit includes a variety of our durable indoor/outdoor vinyl tapes. Kit includes:

- Hard case, USB cable and AC power supply
- 1.5" Yellow label roll with black ribbon (MC-1500-595-YL-BK)
- 1.5" White label roll with red ribbon (MC-1500-595-WT-RD)
- 1.5" Green label roll with white ribbon (MC-1500-595-GN-WT)
- 1.5" White label roll with black ribbon (MC-1500-595-WT-BK)
- 2" x 1" labels for low surface energy labeling (M-20-483)

Catalog #	Description
BMP51-KIT-GI	Kit with BMP51 Label Printer and Li-Ion Battery
BMP53-KIT-GI	Kit with BMP53 Label Printer and LabelMark™ Software



* BMP51 kit shown.

Lab Identification Starter Kit

Accurately identify and track samples in your lab with this lab ID starter kit. Kit includes:

- Hard case, USB cable and AC power supply
- Vial & tube labels (M-156-492)
- Microplate labels (M-81-488)
- Top & side label set for vials & tubes (M-120-492)
- Removable diecut labels for bottles, beakers, etc. (M-103-498)
- 1.5" White label roll for general ID (MC-1500-595-WT-BK)

Catalog #	Description
BMP51-KIT-LS	Kit with BMP51 Label Printer and Li-Ion Battery
BMP53-KIT-LS	Kit with BMP53 Label Printer and LabelMark™ Software