

TLS 2200® Tamper Indicating Materials

BradyID.com/tls2200



Printer Compatibility

All tamper indicating parts on the following page are only compatible with:



TLS 2200® Label Printer

See Page 26

TLS PC Link™ Printer

See Page 27

TLS 2200® Tamper Indicating Materials

Brady offers standard and custom engineered tamper indicating materials to meet your particular product protection needs. These tamper seals and tamper indicating materials provide irreversible, visible evidence of tampering to protect against warranty fraud, product tampering, alteration, and misuse or asset theft. Tamper indicating materials can protect your product's unique model and serial number, and help reduce the chance of liability issues due to unauthorized service or misuse.



B-351 Destructible Vinyl Material

Color: White Finish: Matte

White matte vinyl material with permanent adhesive. Material fractures to show signs of tampering and prevent one-piece label removal. Use caution when removing from liner as material is fragile.

Performance Attributes:

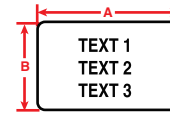


Figure 29



Diagram	Part Number	B-#	Material	Color	Label Width A Inch (mm)	Label Height B Inch (mm)	Labels Per Row	Labels Per Pkg	Rec. Ribbon
Fig. 29	PTL-17-351	B-351	Vinyl	White	1.000 (25.4)	0.500 (12.7)	1	500	R6210
Fig. 29	PTL-31-351	B-351	Vinyl	White	1.500 (38.1)	1.000 (25.4)	1	250	R6210
Fig. 29	PTL-20-351	B-351	Vinyl	White	2.000 (50.8)	1.000 (25.4)	1	100	R6210
Fig. 29	PTL-37-351	B-351	Vinyl	White	3.000 (76.2)	1.900 (48.3)	1	100	R6210



B-352 Destructible Vinyl Material

Color: Silver Finish: Matte

Metallized matte vinyl material with permanent adhesive. Material fractures to show signs of tampering and prevent one-piece label removal. Use caution when removing from liner as material is fragile.

Performance Attributes:

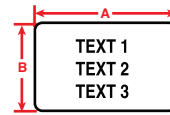


Figure 29

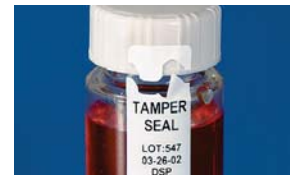


Diagram	Part Number	B-#	Material	Color	Label Width A Inch (mm)	Label Height B Inch (mm)	Labels Per Row	Labels Per Pkg	Rec. Ribbon
Fig. 29	PTL-17-352	B-352	Vinyl	Silver	1.000 (25.4)	0.500 (12.7)	1	500	R6010
Fig. 29	PTL-31-352	B-352	Vinyl	Silver	1.500 (38.1)	1.000 (25.4)	1	250	R6010
Fig. 29	PTL-20-352	B-352	Vinyl	Silver	2.000 (50.8)	1.000 (25.4)	1	100	R6010
Fig. 29	PTL-37-352	B-352	Vinyl	Silver	3.000 (76.2)	1.900 (48.3)	1	100	R6010



B-7546 VOID Footprint Polyester Material

Color: White Finish: Gloss

White glossy polyester tamper-indicating material leaves a "VOID" footprint when label is removed to prevent reuse. Adhesive doesn't allow repositioning and requires minimal handling in order to prevent a premature "VOID" pattern.

Performance Attributes:

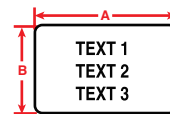


Figure 29



Diagram	Part Number	B-#	Material	Color	Label Width A Inch (mm)	Label Height B Inch (mm)	Labels Per Row	Labels Per Pkg	Rec. Ribbon
Fig. 29	PTL-17-7546	B-7576	Polyester	White	1.000 (25.4)	0.500 (12.7)	1	500	R6010
Fig. 29	PTL-31-7546	B-7576	Polyester	White	1.500 (38.1)	1.000 (25.4)	1	250	R6010
Fig. 29	PTL-20-7546	B-7576	Polyester	White	2.000 (50.8)	1.000 (25.4)	1	100	R6010
Fig. 29	PTL-17-7576	B-7576	Polyester	Silver	1.000 (25.4)	0.500 (12.7)	1	500	R6010
Fig. 29	PTL-31-7576	B-7576	Polyester	Silver	1.500 (38.1)	1.000 (25.4)	1	250	R6010
Fig. 29	PTL-20-7576	B-7576	Polyester	Silver	2.000 (50.8)	1.000 (25.4)	1	100	R6010
Fig. 29	PTL-37-7576	B-7576	Polyester	Silver	3.000 (76.2)	1.900 (48.3)	1	100	R6010

TLS2200 Printer Ribbons on page 57.
Full Material Properties on page 227.