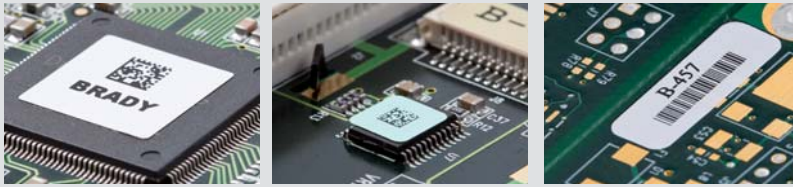


# Circuit Board Materials

BradyID.com



## Printer Compatibility

All circuit board parts shown on the following pages are compatible with the following printers unless otherwise noted.



**Bradyprinter™  
PR Plus Printers**

See Page 130



**Brady IP™ Printer**

See Page 128



**BBP®12 Label Printer**

3" Core Label Rolls are compatible when used with Media Holder accessory.

## Circuit Board Identification Material

**Improve processes and reduce operating costs with clearly identified circuit boards.**

Brady's circuit board material, or PCB labels, are polyimide labels that can withstand the high heats and powerful chemicals used in PCB manufacturing. Brady offers PCB labels in a variety of materials, including anti-static PCB labels and labels for auto-apply applications. These high temp circuit board materials can improve your processes and reduce operating costs by identifying your circuit boards throughout the entire PCB manufacturing process.

**Understanding THT Label Part Numbers**

Example:  
**THT-5-423-10**

<p><b>Technology:</b> Thermal Transfer</p>	<p><b>Quantity:</b> Multiply by 1,000 10 x 1,000 = 10,000</p>
<p><b>Die Cut:</b> #5, 1.000" x 0.500"</p>	<p><b>Material Number:</b> B-423, Gloss White Polyester</p>

THT Label Materials

Circuit Board



## B-436 Removable Polyimide Material

**Color: Amber Finish: Matte**

Amber polyimide material with matte finish for thermal transfer printing. Removal silicone adhesive for temporary preprocess labeling on printed circuit board or electronic components that require clean removability.

**Performance Attributes:**

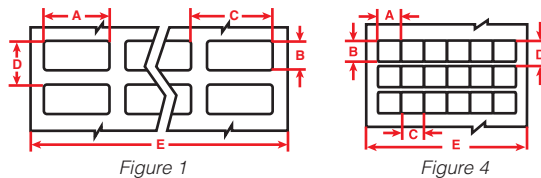


Diagram	Catalog #	Material	Color	Label Width A Inch (mm)	Label Height B Inch (mm)	Horiz. Repeat C Inch (mm)	Vert. Repeat D Inch (mm)	Web Width E Inch (mm)	Labels Per Row	Labels Per Pkg	Rec. Ribbon
Fig. 4	THT-11-436-10	Polyimide	Amber	0.250 (6.4)	0.250 (6.4)	0.250 (6.4)	0.375 (9.5)	3.200 (81.3)	12	10,000	R4300
Fig. 1	THT-14-436-10	Polyimide	Amber	0.650 (16.5)	0.200 (5.1)	0.700 (17.8)	0.300 (7.6)	2.950 (74.9)	4	10,000	R4300
Fig. 1	THT-1-436-10	Polyimide	Amber	0.750 (19.1)	0.250 (6.4)	0.800 (20.3)	0.350 (8.9)	3.350 (85.1)	4	10,000	R4307, R4707