

# Circuit Board Materials

BradyID.com



## B-717 Electrostatic Dissipative Polyimide Material

**Color: White**      **Finish: Gloss**

High temperature white polyimide material (2 mil) with glossy finish. Features a permanent static dissipative adhesive and a static dissipative release liner. Withstands wave solder environments for printed circuit board and electronic component preprocess labeling. Surface resistivity values in the recommended range for Dissipative ESD packaging materials. Also meets requirements of EIA-541 "Packaging Material Standards for ESD Sensitive Items."

### Performance Attributes:

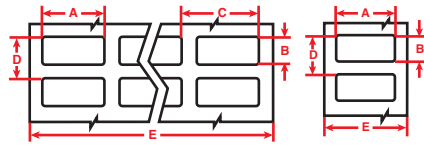


Figure 1

Figure 2

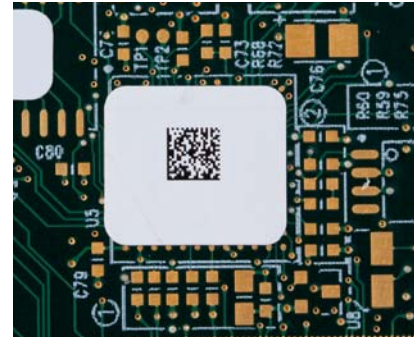


Diagram	Catalog #	Material	Color	Label Width A Inch (mm)	Label Height B Inch (mm)	Horiz. Repeat C Inch (mm)	Vert. Repeat D Inch (mm)	Web Width E Inch (mm)	Labels Per Row	Labels Per Pkg	Rec. Ribbon
Fig. 1	THT-70-717-20	Polyimide	White	0.250 (6.4)	0.250 (6.4)	0.320 (8.1)	0.350 (8.9)	2.370 (60.2)	7	20,000	R6000
Fig. 1	THT-38-717-10	Polyimide	White	0.375 (9.5)	0.375 (9.5)	0.437 (11.1)	0.475 (12.1)	3.200 (81.3)	7	10,000	R6002
Fig. 1	THT-12-717-10	Polyimide	White	0.500 (12.7)	0.437 (11.1)	0.662 (16.8)	0.537 (13.6)	3.350 (85.1)	5	10,000	R6007
Fig. 1	THT-96-717-10	Polyimide	White	0.500 (12.7)	0.275 (7.0)	0.600 (15.2)	0.375 (9.5)	2.500 (63.5)	4	10,000	R6002
Fig. 2	THT-97-717-10	Polyimide	White	0.500 (12.7)	0.200 (5.1)	-	0.300 (7.6)	0.700 (17.8)	1	10,000	R6011
Fig. 2	THT-99-717-10	Polyimide	White	0.500 (12.7)	0.500 (12.7)	-	0.600 (15.2)	0.700 (17.8)	1	10,000	R6011
Fig. 1	THT-14-717-10	Polyimide	White	0.650 (16.5)	0.200 (5.1)	0.700 (17.8)	0.300 (7.6)	2.950 (74.9)	4	10,000	R6002
Fig. 2	THT-47-717-10	Polyimide	White	0.650 (16.5)	0.200 (5.1)	-	0.300 (7.6)	0.850 (21.6)	1	10,000	R6011
Fig. 1	THT-1-717-10	Polyimide	White	0.750 (19.1)	0.250 (6.4)	0.800 (20.3)	0.350 (8.9)	3.350 (85.1)	4	10,000	R6007
Fig. 2	THT-46-717-10	Polyimide	White	0.750 (19.1)	0.250 (6.4)	-	0.350 (8.9)	0.950 (24.1)	1	10,000	R6006
Fig. 2	THT-103-717-10	Polyimide	White	1.000 (25.4)	0.250 (6.4)	-	0.350 (8.9)	1.200 (30.5)	1	10,000	R6006
Fig. 2	THT-42-717-10	Polyimide	White	1.000 (25.4)	0.187 (4.8)	-	0.287 (6.9)	1.200 (30.5)	1	10,000	R6006
Fig. 2	THT-59-717-10	Polyimide	White	1.000 (25.4)	0.500 (12.7)	-	0.600 (15.2)	1.200 (30.5)	1	10,000	R6006
Fig. 2	THT-43-717-10	Polyimide	White	1.250 (31.8)	0.250 (6.4)	-	0.350 (8.9)	1.450 (36.8)	1	10,000	R6006
Fig. 2	THT-44-717-10	Polyimide	White	1.375 (34.9)	0.250 (6.4)	-	0.350 (8.9)	1.600 (40.6)	1	10,000	R6000
Fig. 2	THT-45-717-10	Polyimide	White	1.500 (38.1)	0.250 (6.4)	-	0.350 (8.9)	1.700 (43.2)	1	10,000	R6000
Fig. 2	THT-60-717-10	Polyimide	White	1.500 (38.1)	0.125 (3.2)	-	0.225 (5.7)	1.700 (43.2)	1	10,000	R6000
Fig. 2	THT-15-717-2.5	Polyimide	White	2.000 (50.8)	0.250 (6.4)	-	0.375 (9.5)	2.200 (55.9)	1	2,500	R6000
Fig. 2	THT-48-717-10	Polyimide	White	2.000 (50.8)	0.250 (6.4)	-	0.350 (8.9)	2.200 (55.9)	1	10,000	R6000



### Did You Know? Custom Label Offerings

Don't see a stock label in the size, configuration or color needed for your particular application?

Brady offers custom label capability for many of the materials in this catalog. Our dedicated, experienced custom quoting team can provide pricing for your unique label needs.

Contact Brady Customer Service at 1-888-272-3946 for more information and to order your custom labels.

