

Dot Matrix Materials - Benchtops

BradyID.com

Wire & Cable Tags - Non Adhesive

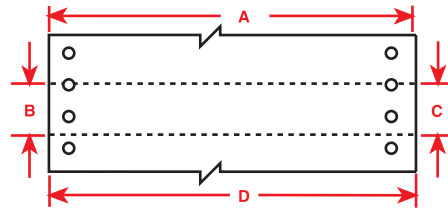


Fig. D23

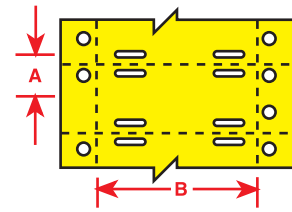


Fig. D26

Diagram	Part Number	B-#	Material	Color	Label Width A Inch (mm)	Label Height B Inch (mm)	Vertical Repeat C Inch (mm)	Web Width D Inch (mm)	Holes Per Tag	Labels Per Row	Labels Per Pkg
D23	BT-109-WT-3060-1	B-109	Polyethylene	White	3.000 (76.20)	6.000 (152.40)	6.000 (152.40)	4.000 (101.60)	-	1	100
D23	BT-109-WT-3060-2	B-109	Polyethylene	White	3.000 (76.20)	6.000 (152.40)	6.000 (152.40)	4.000 (101.60)	-	2	100
D23	BT-109-WT-2037	B-109	Polyethylene	White	3.750 (95.25)	2.000 (50.80)	2.000 (50.80)	4.750 (120.65)	-	1	100
D23	BT-109-WT-2547	B-109	Polyethylene	White	4.750 (120.65)	2.500 (63.50)	2.500 (63.50)	5.750 (146.05)	-	1	100
D26	BT-508-WT-2050	B-508	Nomex	White	2.000 (50.80)	0.500 (12.70)	0.500 (12.70)	3.000 (76.2)	4	1	2,500
D26	BT-508-WT-2075	B-508	Nomex	White	2.000 (50.80)	0.750 (19.05)	0.750 (19.05)	3.000 (76.2)	6	1	2,500
D26	BT-508-YL-2050	B-508	Nomex	Yellow	2.000 (50.80)	0.500 (12.70)	0.500 (12.70)	3.000 (76.2)	4	1	2,500
D26	BT-508-YL-2075	B-508	Nomex	Yellow	2.000 (50.80)	0.750 (19.05)	0.750 (19.05)	3.000 (76.2)	6	1	2,500

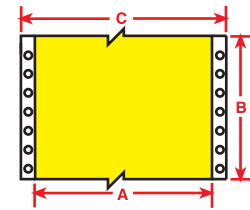


Fig. D20

BRADYWRAP™ Wire & Cable Tape - Continuous Strip / Cut-To-Length

Diagram	Part Number	B-#	Material	Color	Label Width A Inch (mm)	Label Height B Inch (mm)	Web Width C Inch (mm)	Labels Per Row	Labels Per Pkg	Max. Characters Across 5 CPI	10 CPI	17.1 CPI
D20	RCM-637-1.0-WT	B-637	Tedlar	White	1.000 (25.40)	100 ft (30.48 m)	3.600 (91.44)	1	1 cont.	4	9	15
D20	RCM-637-1.5-WT	B-637	Tedlar	White	1.500 (38.10)	100 ft (30.48 m)	3.600 (91.44)	1	1 cont.	7	14	23
D20	RCM-330-2.0-WT	B-330	Polyolefin	White	2.000 (50.80)	100 ft (30.48 m)	3.600 (91.44)	1	1 cont.	9	19	32
D20	RCM-637-2.0-WT	B-637	Tedlar	White	2.000 (50.80)	100 ft (30.48 m)	3.600 (91.44)	1	1 cont.	9	19	32
D20	RCM-637-1.0-YL	B-637	Tedlar	Yellow	1.000 (25.40)	100 ft (30.48 m)	3.600 (91.44)	1	1 cont.	4	9	15
D20	RCM-637-1.5-YL	B-637	Tedlar	Yellow	1.500 (38.10)	100 ft (30.48 m)	3.600 (91.44)	1	1 cont.	7	14	23
D20	RCM-637-2.0-YL	B-637	Tedlar	Yellow	2.000 (50.80)	100 ft (30.48 m)	3.600 (91.44)	1	1 cont.	9	19	32

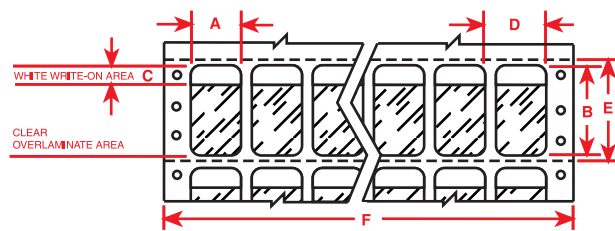


Fig. D17

Self-Laminating Wire & Cable Markers

Diagram	Part Number	B-#	Material	Color	Label Width A Inch (mm)	Label Height B Inch (mm)	Print-Area C Inch (mm)	Horizontal Repeat C Inch (mm)	Vertical Repeat D Inch (mm)	Web Width E Inch (mm)	Labels Per Row	Labels Per Pkg
D17	DAT-71-642-10	B-642	Polyvinylfluoride	White	0.500 (12.7)	0.750 (19.05)	0.375 (9.53)	0.600 (15.24)	1.000 (25.40)	8.100 (205.74)	12	10,000
D17	* DAT-55-642-10	B-642	Polyvinylfluoride	White	0.500 (12.7)	0.750 (19.05)	0.375 (9.53)	0.600 (15.24)	1.000 (25.40)	9.300 (236.22)	14	10,000
D17	DAT-52-642-10	B-642	Polyvinylfluoride	White	0.800 (20.32)	1.437 (36.50)	0.500 (12.70)	0.900 (22.86)	1.500 (38.10)	6.300 (160.02)	6	10,000
D17	* DAT-41-292-1	B-292	Vinyl	White	1.000 (25.40)	5.937 (150.80)	1.500 (38.10)	1.100 (27.94)	6.000 (152.40)	9.500 (241.30)	8	1,000
D17	* DAT-41-292-2.5	B-292	Vinyl	White	1.000 (25.40)	5.937 (150.80)	1.500 (38.10)	1.100 (27.94)	6.000 (152.40)	9.500 (241.30)	8	2,500
D17	* DAT-42-292-1	B-292	Vinyl	White	1.000 (25.40)	7.437 (188.90)	1.500 (38.10)	1.100 (27.94)	7.500 (190.50)	9.500 (241.30)	8	1,000
D17	* DAT-42-292-2.5	B-292	Vinyl	White	1.000 (25.40)	7.437 (188.90)	1.500 (38.10)	1.100 (27.94)	7.500 (190.50)	9.500 (241.30)	8	2,500
D17	DAT-69-292-GY	B-292	Vinyl	Gray	1.000 (25.4)	5.937 (150.80)	1.500 (38.10)	1.100 (27.94)	6.000 (152.40)	8.400 (213.36)	7	2,500
D17	DAT-75-292-BL	B-292	Vinyl	Blue	2.000 (50.80)	5.937 (150.80)	1.500 (38.10)	2.100 (53.34)	6.000 (152.40)	7.000 (177.80)	3	2,500
D17	DAT-75-292-RD	B-292	Vinyl	Red	2.000 (50.80)	5.937 (150.80)	1.500 (38.10)	2.100 (53.34)	6.000 (152.40)	7.000 (177.80)	3	2,500
D17	DAT-69-292-YL	B-292	Vinyl	Yellow	1.000 (25.4)	5.937 (150.80)	1.500 (38.10)	1.100 (27.94)	6.000 (152.40)	8.400 (213.36)	7	2,500
D17	DAT-159-292-YL	B-292	Vinyl	Yellow	2.000 (50.80)	8.437 (214.30)	1.500 (38.10)	2.100 (53.34)	8.500 (215.90)	7.200 (182.88)	3	2,500

* Does not fit narrow carriage (80-column) printers.

Full Material Properties on page 237.