

BMP®51 / BMP®53 Label Materials

BradyID.com/bmp51

Self-Laminating Vinyl Labels (B-427)

Features a clear, non-printable area that wraps around the cable and overlaminates the printed text. Offers superior resistance to handling, abrasion, dirt, oils, solvents, and water.

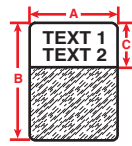


Figure 42



Figure 42a
(continuous)



Fits Printer Model	Diagram	Catalog #	B#	Material	Color	Sized to Fit	Label Width A Inch (mm)	Label Height B Inch (mm)	Print-On Height C Inch (mm)	Labels/Roll
B-427 – Self-Laminating Vinyl										
BMP41, 51, 53	Fig. 42	M-136-472	B-427	Vinyl	BK on WT	2 pair Fiber/Coaxial, Single/Multi-Mode	0.750 (19.05)	1.000 (25.40)	0.375 (9.53)	340
BMP41, 51, 53	Fig. 42	M-49-427	B-427	Vinyl	BK on WT	2 pair Fiber/Coaxial, Single/Multi-Mode	1.000 (25.40)	1.000 (25.40)	0.375 (9.53)	200
BMP41, 51, 53	Fig. 42	M-102-427	B-427	Vinyl	BK on WT	CAT-6, 4 pair UTP Copper	0.500 (12.70)	1.250 (31.75)	0.375 (9.53)	200
BMP51, 53	Fig. 42	M-115-427	B-427	Vinyl	BK on WT	CAT-6, 4 pair UTP Copper	1.500 (38.10)	1.250 (31.75)	0.500 (12.70)	200
BMP41, 51, 53	Fig. 42	M-143-427	B-427	Vinyl	BK on WT	CAT-6, 4 pair UTP Copper, Fiber, Coaxial	1.000 (25.40)	1.250 (31.75)	0.500 (12.70)	200
BMP41, 51, 53	Fig. 42	M-89-427	B-427	Vinyl	BK on WT	CAT-6, 4 pair UTP Copper	0.500 (12.70)	1.500 (38.10)	0.500 (12.70)	360
BMP41, 51, 53	Fig. 42	M-90-427	B-427	Vinyl	BK on WT	CAT-6, 4 pair UTP Copper	0.750 (19.05)	1.500 (38.10)	0.500 (12.70)	200
BMP41, 51, 53	Fig. 42	M-91-427	B-427	Vinyl	BK on WT	CAT-6, 4 pair UTP Copper, Fiber, Coaxial	1.000 (25.40)	1.500 (38.10)	0.500 (12.70)	200
BMP41, 51, 53	Fig. 42	M-91-427-YL	B-427	Vinyl	BK on YL	CAT-6, 4 pair UTP Copper, Fiber, Coaxial	1.000 (25.40)	1.500 (38.10)	0.500 (12.70)	200
BMP51, 53	Fig. 42	M-32-427	B-427	Vinyl	BK on WT	CAT-6, 4 pair UTP Copper, Fiber, Coaxial	1.500 (38.10)	1.500 (38.10)	0.500 (12.70)	180
BMP41, 51, 53	Fig. 42	M-51-427	B-427	Vinyl	BK on WT	25 pair Copper, 4-12 pair Fiber, Coaxial	1.000 (25.40)	2.500 (63.50)	0.750 (19.05)	80
BMP41, 51, 53	Fig. 42	M-51-427-YL	B-427	Vinyl	BK on YL	25 pair Copper, 4-12 pair Fiber, Coaxial	1.000 (25.40)	2.500 (63.50)	0.750 (19.05)	80
BMP51, 53	Fig. 42	M-116-427	B-427	Vinyl	BK on WT	25 pair Copper, 4-12 pair Fiber, Coaxial	1.500 (38.10)	2.500 (63.50)	0.750 (19.05)	80
BMP41, 51, 53	Fig. 42	M-53-427	B-427	Vinyl	BK on WT	50 pair Copper, 24 pair Fiber, Backbone	1.000 (25.40)	4.000 (101.60)	1.000 (25.40)	70
BMP41, 51, 53	Fig. 42	M-53-427-YL	B-427	Vinyl	BK on YL	50 pair Copper, 24 pair Fiber, Backbone	1.000 (25.40)	4.000 (101.60)	1.000 (25.40)	70
BMP51, 53	Fig. 42	M-33-427	B-427	Vinyl	BK on WT	50 pair Copper, 24 pair Fiber, Backbone	1.500 (38.10)	4.000 (101.60)	1.000 (25.40)	70
BMP51, 53	Fig. 42	M-34-427	B-427	Vinyl	BK on WT	100 pair Copper, 36 pair Fiber, Backbone	1.500 (38.10)	6.000 (152.40)	1.500 (38.10)	40
B-427 – Continuous Self-Laminating Vinyl										
BMP51, 53	Fig. 42a	MC-1000-427	B-427	Vinyl	BK on WT	CAT-6, 4 pair UTP Copper	25 ft. (7.62 m)	1.000 (25.40)	0.375 (9.53)	1 roll (cont.)
BMP51, 53	Fig. 42a	MC-1500-427	B-427	Vinyl	BK on WT	CAT-6, 4 pair UTP Copper	25 ft. (7.62 m)	1.500 (38.10)	0.500 (12.70)	1 roll (cont.)

Faceplate & Outlet ID (B-412, B-422, B-483)

Label your ports, jacks, and outlets with a variety of adhesive labels or slide-in strips.

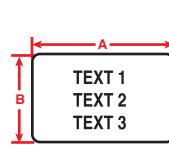


Figure 29

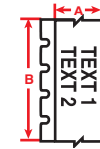


Figure 33



Fits Printer Model	Diagram	Catalog #	B#	Material	Color	Material Notes	Label Width A Inch (mm)	Label Height B Inch (mm)	Labels/Roll	
B-412 – Polypropylene Tag										
BMP41, 51, 53	Fig. 33	MC-475-412	B-412	Polypropylene Tag	BK on WT	Non-Adhesive Slide-in Strips	0.475 (12.07)	20 ft (6.09 m)	1 roll (cont.)	
B-422 – Gloss Polyester										
BMP41, 51, 53	Fig. 33	MC-375-422	B-422	Gloss Polyester	BK on WT	Adhesive Strips	0.375 (9.53)	25 ft (7.62 m)	1 roll (cont.)	
BMP41, 51, 53	Fig. 33	MC-475-422	B-422	Gloss Polyester	BK on WT	Adhesive Strips	0.475 (12.07)	25 ft (7.62 m)	1 roll (cont.)	
BMP41, 51, 53	Fig. 29	M-7-422	B-422	Gloss Polyester	BK on WT	Individual Adhesive Labels	0.500 (12.70)	0.500 (12.70)	280	
BMP41, 51, 53	Fig. 29	M-89-422	B-422	Gloss Polyester	BK on WT	Individual Adhesive Labels	1.500 (38.10)	0.500 (12.70)	360	
BMP41, 51, 53	Fig. 29	M-47-422	B-422	Gloss Polyester	BK on WT	Individual Adhesive Labels	1.000 (25.40)	0.500 (12.70)	360	
BMP41, 51, 53	Fig. 29	M-90-422	B-422	Gloss Polyester	BK on WT	Individual Adhesive Labels	1.500 (38.10)	0.750 (19.05)	200	
B-483 – Ultra Aggressive Polyester										
BMP41, 51, 53	Fig. 29	M-61-483	B-483	Polyester	BK on WT	Individual Adhesive Labels	2.000 (50.80)	0.500 (12.70)	80	

Punch Block & Patch Panel ID (B-412, B-422)

Using BMP®51 printer's built-in templates, LabelMark™ 6 Software or the Brady Mobile App, you can easily create serialized punch block labels and patch panel strips with or without grid lines to fit your equipment.

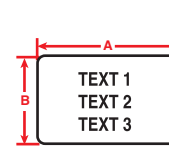


Figure 29

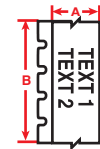
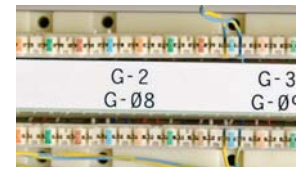


Figure 33



Fits Printer Model	Diagram	Catalog #	B#	Material	Color	Material Notes	Label Width A Inch (mm)	Label Height B Inch (mm)	Labels/Roll	
B-412 – Polypropylene Tag										
BMP41, 51, 53	Fig. 33	MC-375-412	B-412	Polypropylene Tag	BK on WT	Non-Adhesive Slide-in Strips	0.375 (9.53)	20 ft (6.09 m)	1 roll (cont.)	
BMP41, 51, 53	Fig. 33	MC-475-412	B-412	Polypropylene Tag	BK on WT	Non-Adhesive Slide-in Strips	0.475 (12.07)	20 ft (6.09 m)	1 roll (cont.)	
BMP41, 51, 53	Fig. 33	MC-625-412	B-412	Polypropylene Tag	BK on WT	Non-Adhesive Slide-in Strips	0.675 (12.07)	20 ft (6.09 m)	1 roll (cont.)	
B-422 – Gloss Polyester										
BMP41, 51, 53	Fig. 33	MC-375-422	B-422	Gloss Polyester	BK on WT	Adhesive Strips	0.375 (9.53)	25 ft (7.62 m)	1 roll (cont.)	
BMP41, 51, 53	Fig. 33	MC-475-422	B-422	Gloss Polyester	BK on WT	Adhesive Strips	0.475 (12.07)	25 ft (7.62 m)	1 roll (cont.)	
BMP41, 51, 53	Fig. 33	MC-625-422	B-422	Gloss Polyester	BK on WT	Adhesive Strips	0.675 (12.07)	25 ft (7.62 m)	1 roll (cont.)	
BMP41, 51, 53	Fig. 29	M-7-422	B-422	Gloss Polyester	BK on WT	Individual Adhesive Port Labels	0.500 (12.70)	0.500 (12.70)	280	