



## B-718 Electrostatic Dissipative Polyimide Material

**Color: White Finish: Gloss**

High temperature, low profile white polyimide material (1 mil) with glossy finish. Features a permanent static dissipative adhesive and a static dissipative release liner. Reduced profile and thin, lighter weight material ideal for high temperature wire marking. Surface resistivity values in the recommended range for Dissipative ESD Packaging Materials. Also meets requirements of EIA-541 "Packaging Material Standards for ESD Sensitive Items."

**Performance Attributes:**

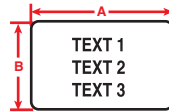


Figure 29

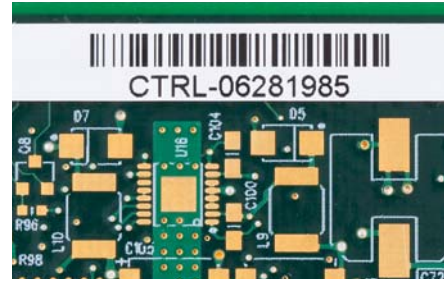


Diagram	Part Number	B-#	Material	Color	Label Width A Inch (mm)	Label Height B Inch (mm)	Labels Per Row	Labels Per Pkg	Rec. Ribbon
Fig. 29	PTL-1-718	B-718	Polyimide	White	0.250 (6.4)	0.250 (6.4)	1	750	R6010
Fig. 29	PTL-3-718	B-718	Polyimide	White	0.375 (9.5)	0.375 (9.5)	1	500	R6010
Fig. 29	PTL-4-718	B-718	Polyimide	White	0.400 (10.6)	0.400 (10.2)	1	500	R6010
Fig. 29	PTL-6-718	B-718	Polyimide	White	0.500 (12.7)	0.275 (7.0)	1	750	R6010
Fig. 29	PTL-9-718	B-718	Polyimide	White	0.650 (16.5)	0.200 (5.1)	1	750	R6010
Fig. 29	PTL-10-718	B-718	Polyimide	White	0.750 (19.1)	0.250 (6.4)	1	750	R6010
Fig. 29	PTL-13-718	B-718	Polyimide	White	0.900 (22.9)	0.250 (6.4)	1	750	R6010
Fig. 29	PTL-14-718	B-718	Polyimide	White	1.000 (25.4)	0.187 (4.8)	1	750	R6010
Fig. 29	PTL-16-718	B-718	Polyimide	White	1.000 (25.4)	0.375 (9.5)	1	500	R6010
Fig. 29	PTL-28-718	B-718	Polyimide	White	1.500 (38.1)	0.250 (6.4)	1	750	R6010



## B-719 Electrostatic Dissipative Polyimide Material

**Color: White Finish: Matte**

High temperature, low profile white polyimide material (1 mil) with a permanent static dissipative adhesive and static dissipative release liner. Similar to B-478, but with a matte topcoat, which prevents solder balls from sticking after molten wave solder exposure. Surface resistivity values in the recommended range for Dissipative ESD packaging materials. Also meets requirements of EIA-541 "Packaging Material Standards for ESD Sensitive Items."

**Performance Attributes:**

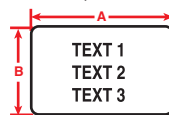


Figure 29



Diagram	Part Number	B-#	Material	Color	Label Width A Inch (mm)	Label Height B Inch (mm)	Labels Per Row	Labels Per Pkg	Rec. Ribbon
Fig. 29	PTL-4-719	B-479	Polyimide	White	0.400 (10.6)	0.400 (10.2)	1	500	R6010
Fig. 29	PTL-6-719	B-479	Polyimide	White	0.500 (12.7)	0.275 (7.0)	1	750	R6010
Fig. 29	PTL-9-719	B-479	Polyimide	White	0.650 (16.5)	0.200 (5.1)	1	750	R6010
Fig. 29	PTL-10-719	B-479	Polyimide	White	0.750 (19.1)	0.250 (6.4)	1	750	R6010
Fig. 29	PTL-13-719	B-479	Polyimide	White	0.900 (22.9)	0.250 (6.4)	1	750	R6010
Fig. 29	PTL-16-719	B-479	Polyimide	White	1.000 (25.4)	0.375 (9.5)	1	500	R6010
Fig. 29	PTL-17-719	B-479	Polyimide	White	1.000 (25.4)	0.500 (12.7)	1	500	R6010
Fig. 29	PTL-28-719	B-479	Polyimide	White	1.500 (38.1)	0.250 (6.4)	1	750	R6010